



WSPu3a Newsletter

June/July
2023



Jubilee in Bloom

Photo by Ced Shurben

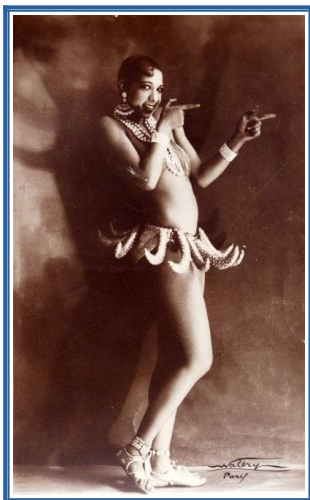
The Committee's Briefs

Contact the Committee

You can use this link to send a message to any of our Committee:

<https://u3asites.org.uk/woodhall-spa/contact>

Chairman's Chat



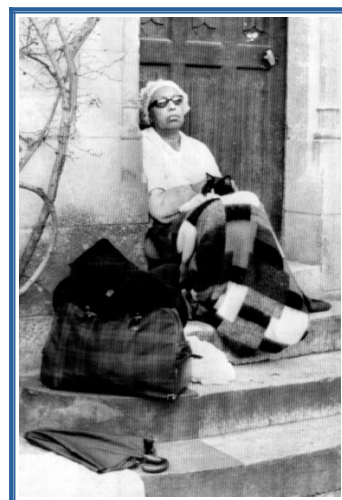
It is funny how things connect.

Attendance at the u3a Jazz group introduced me to American female singers. Josephine Baker was one, and I learnt that she had ended up living in France. A recent canoeing trip down the River Vezere meant that we visited the Chateau Milandes where she lived.

Her life was eventful: she sang and danced the Charleston at the Folies Bergere in nothing but a banana skirt; she was a resistance fighter; and Martin Luther King invited her to make a speech at the March on Washington in 1968.

Poignantly, she was evicted with her few possessions from her home in 1968.

It is surprising what you learn at the u3a.



Malcolm Capps – Chairman

Special Notice

The Woodhall Spa u3a Committee would like to apologise to all our members due to an oversight by the Committee at the AGM in that each proposition was correctly proposed and seconded, however, we failed to take a vote on each.

We have decided to rectify the situation at a Special General Meeting (SGM) to be held on Thursday 3 August at 2:30 pm in Coronation Hall, followed by refreshments and speaker.

All the information sent and given to members at the AGM is still current and relevant.

All members will be expected to vote on the following propositions as detailed at the AGM held on Thursday 1 June 2023:

Item 3	Acceptance of AGM 2022 Minutes Proposed by: Judy Binks Seconded by: John Cotton
Item 4	Chairman's Report Proposed by: Les Wylde Seconded by: Ann Fletcher
Item 5	Treasurer's Report Proposed by: Les Wylde Seconded by: Michaela Moody
Item 6	Group Co-ordinator's Report Proposed by: John Cotton Seconded by: Stef Lorenz
Item 7	Proposal to Amend Woodhall Spa u3a Constitution Proposed by: Bev Bennett Seconded by: Stef Lorenz
Item 8	Officers and Executive Committee Proposed by: John Cotton Seconded by: Judy Binks
Item 9	Appointment of Independent Examiner of Accounts for 2023-24 Proposed by: Anne Platts Seconded by: Les Wylde

If anyone has any questions or requires further information please contact Malcolm Capps, Chair of Woodhall Spa U3A on malcolmcapps@yahoo.co.uk

Groups News

Any members who renewed their membership after April will have been removed from the groups' lists on the assumption that you were no longer a u3a member. If this is the case will you please [LOOK AT THE SHEETS OF THE GROUPS YOU HAD JOINED](#) to check your name is still on that list, and add it if necessary.

There are currently more than 30 active groups and we are always happy to start new ones. To this end I have this month put out a sheet for [6+ Miles Walking Group](#). I know we have several keen striders, so please add your name. This will make our fourth walking group which caters for all lengths and abilities; [Short Walks](#) (an hour around the village), [Woodhall Wanderers](#) (up to 4 miles) and the [5 Mile Walking Group](#).

If you need any information on the groups, have any suggestions or comments then please come and speak to me at the monthly meeting. I'm usually near the groups' sheets table.

Val Shurben – Groups' Coordinator
Groups List

You can use this link to find a current list of the groups we support, and how to join up:
<https://u3asites.org.uk/woodhall-spa/groups>

Your u3a Needs YOU

Situations Vacant

Assets Manager

We are looking for a *technically literate* someone to take on this non Committee role, to be responsible for the maintenance of equipment purchased by WSPu3a for the use of its members and guest speakers at monthly meetings.

Overview of the role

- Keeping and updating an electronic assets data base
- Arranging servicing/repairs and PAT testing of equipment
- Support groups with equipment from store, or at members' presentations
- Support committee members at monthly meetings, and the appointed speaker by setting up and monitoring equipment

If you wish to discuss this role or put your name forward for it, please contact Woodhall Spa u3a Business Secretary, secretary@woodhallspa-u3a.org.uk.

Online u3a

Find out more:

You can use these links to search for ways of furthering your interest in specific subjects, or even take part in some competitions:

Our own website

<https://u3asites.org.uk/woodhall-spa/welcome>

u3a – Online Learning Events

<https://www.u3a.org.uk/events/educational-events>

u3a Radio Podcast

Discover the u3a off the wall event; and hear some of the winning poems from the u3a poetry competition.

<https://youtu.be/J8XVgudnU3s>



Richborough Roman fort and Amphitheatre

Go on a virtual tour of one of the most important Roman sites in Britain

<https://www.eventbrite.co.uk/e/richborough-roman-fort-and-amphitheatre-tickets-630842405617>

Coming Soon

Upcoming Events list

You can use this link to find more details on all the events in our diary:

<https://u3asites.org.uk/woodhall-spa/events>

Monthly Meetings

July 6th

2:30pm to 4pm
Coronation Hall

Growing and using medicinal plants and herbs

Hannah Sylvester, Medical Herbalist

August 3rd

2:30pm to 4pm
Coronation Hall

Funny Turns. A celebration of entertainment as it used to be

Dave Moylan

Outings

Brigg Garden Centre and afternoon tea

Tuesday, 26th September

Leaving Stixwold Road, Woodhall Spa at 10.30am

Cost – £28

Leaving Brigg at 4.00pm

Yellow sheet will be out at our next meeting, or contact Outings group as below.

Jan Smith – Group Co-Leader

Use this link for booking and payment details:

[Woodhall Spa u3a: Outings \(u3asites.org.uk\)](https://u3asites.org.uk/woodhall-spa/u3a-outings)

Around the Groups in 30 days

Five Mile Walkers

Evening Walking

Lincolnshire has no natural isolated landmarks, we rely on the Cathedral and Boston Stump to find our way. The Lincolnshire Edge runs down the spine of the county and is a natural divide between the Trent and Witham valley and the Heath.

We decided to walk in the evening. Following the Edge and looking westwards to see the setting sun.



At Boothby Graffoe we stopped for a picnic tea and then on to The Tempest at Coleby for some "Good Honest Ale" and a sit down in the garden. Further on there was a wonderful display of flowers along the field edges and we saw an icebow and a trip of hares.

Malcolm Capps – Group Leader
Photos – Les Wylde



To make it a linear walk, we caught the bus at Harmston and followed the Viking Way from Wellingore back to Harmston. The route is a delightful mixture of pathways between overarching hedges and views over the Witham valley. Below us stretched the green fields to the Trent and beyond. Nearby the farmers were haymaking. Every few miles we sauntered down quiet village streets bordered with limestone pantiled cottages.

After days of dismal low cloud the sun shone and we could see as far as Leicestershire to Old John and Bardon Hill, but curiously never saw the Cathedral, which was always around the corner.

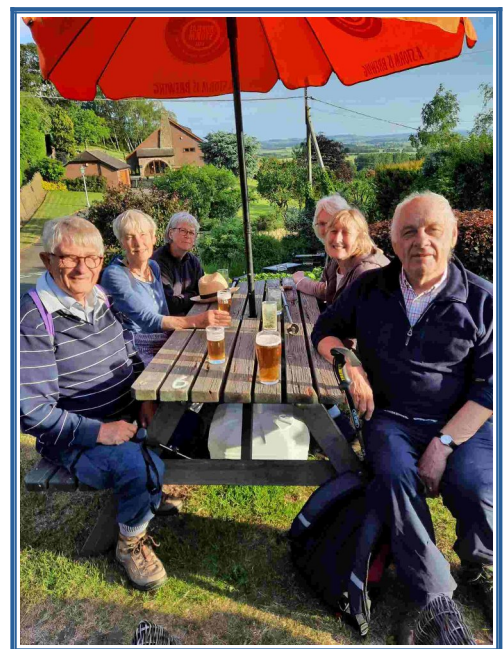
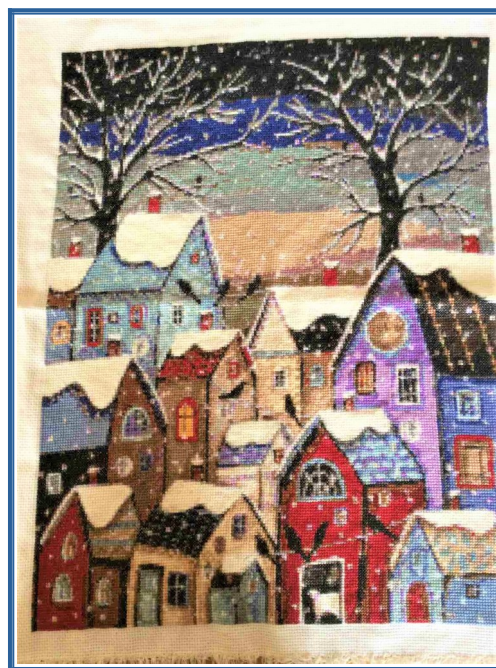


Photo – Colin Budge

Sew & Sew

This month, members of the Sew & Sew group had been asked to bring along finished items so they could be documented and shared. Katherine brought her recently completed Winter cross-stitch scene. She then further stunned us with other items which she had started/completed during lockdown. Katherine buys these as kits, so the fabric, threads and pattern are provided – leaving you to do all the hard work! As can be seen there is a great range from contemporary to the traditional samplers, and she's even completed an exquisite embroidery too. Given that my cross-stitch attempts are limited to what I can fit on a small greeting card, I have to admire her patience and skill.



Katherine's Winter Scene



Katherine's X stitch and Embroidery



Katherine's Samplers

Joan is searching for the perfect font so she can complete the birth name on her cross-stitch work which will then be given as a gift. Once again, another example of very neat and accomplished stitching.

The cushion and bag were completed by Barbara, our resident patchwork and quilting guru. Between providing us with much-needed assistance, Barbara found time to *foundation-piece* a cushion including hand-quilting the centre; she has also appliqued the flower on a handbag she has sewn.

[Continued](#)

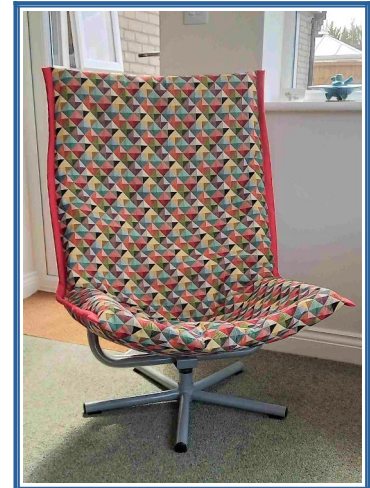


Joan and Barbara's work

Sew & Sew – Continued

I finally replaced the cover on my husband's favourite chair, which had been languishing in the loft for many years. This was definitely out of my comfort zone, but we always learn things when we challenge ourselves. The Sew & Sew group wish Lynn a speedy recovery and return to the group.

Carmel Sefton

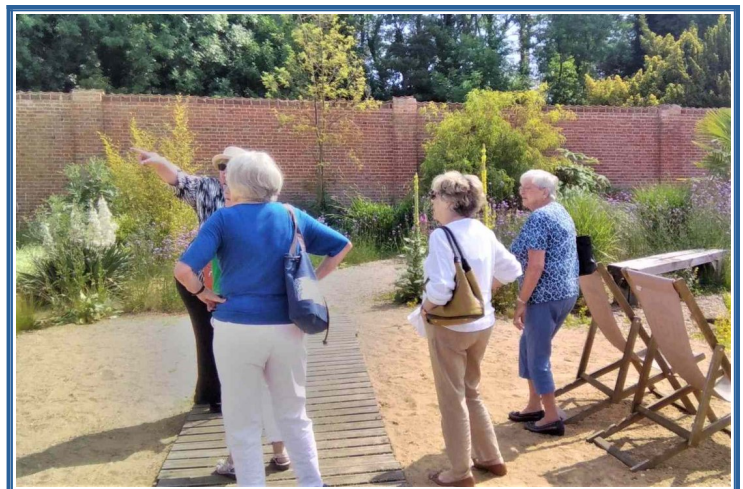


The Editor's Favourite Chair

MOTO (Members On Their Own)

Walled Garden, Baumber

The MOTO group has been running for a few months now and we have enjoyed meals out and a backstage tour at the New Theatre Royal in Lincoln as well as our monthly meetings at The Inn. Our most recent outing was to the Walled Garden in Baumber. Six group members enjoyed a leisurely stroll around the beautiful grounds and we also took time to have a pleasant lunch sitting outside as the weather was so kind to us.



We finished off our trip with a look around the plants and general goods for sale. We have a river trip and a visit to Kirkstead Church plus a picnic to look forward to soon. Our group is quite full but if you'd like to join us add your name to the list at the U3A monthly meeting.

Rosemary Brown

Outings

Renishaw Hall

The latest outings trip for U3A members was to Renishaw Hall and gardens, Derbyshire, earlier this month. Renishaw has been the ancestral home of the Sitwell family for nearly 400 years and still is today. George Sitwell, a wealthy landowner and Iron Master from the 16th century had the first Renishaw Hall built and over the years alterations and building additions have made the hall what it is today.



Our coach journey took us through Clumber Park and then on to the outskirts of Chesterfield. On arrival we were met by Phil from the Visitor Centre, who warmly welcomed us. He outlined the timetable for the visit which included a tour of Renishaw Hall later that day. Everyone was given a map of the gardens and despite the cool, cloudy weather at the time, it didn't damper anyone's mood as we looked forward to exploring Renishaw's grounds. After tea and coffee at the estate's Cafe, we ventured into the award winning Italianate gardens. It has over 20 wonderful areas to admire.



Around every corner was yet another stunning scene of numerous diverse plants, beautiful flowering shrubs, water features, and some very neat topiary. Everything was thriving due to the work of the estate's gardening experts who manage it all year round. Words can't really describe the wonder of it all – definitely a garden to visit.

[Continued](#)

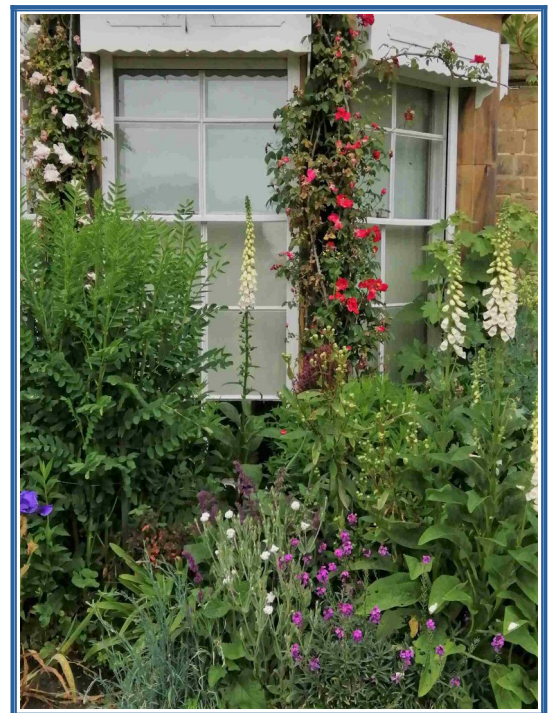
Renishaw Hall – Continued

In the afternoon we were given an hour long tour of the hall itself by our two guides. They led us through ornate stately rooms talking about the Sitwell family history and fortunes, their ups and downs.

Renishaw has the largest collection of paintings by John Piper, a British artist recognised for his landscape scenes and architecture. We saw examples of these and other works of art from down the centuries. Chippendale furniture, Jacobean ceiling craft, 17th century Italian furniture and more filled the rooms as the tour went on. It was a very interesting and informative afternoon.



Renishaw also has a museum which displays heirlooms, photographs and literature about the Sitwell family. Edith Sitwell famous for her poetry early in the 20th century, her dramatic style and costumes, features in the museum.



Towards the end of the afternoon the sun finally appeared and it warmed up. Phil from the Visitor Centre came to see us again as we said our goodbyes. Then it was down to our driver, Duncan from Dickinsons, to bring us safely back to a sunny Woodhall Spa.

Jan Smith Group Co-Leader

Photos by Sid Plummer and Jan Smith

Wild Flowers

Red Hill Nature Reserve

On a hot afternoon in June, the Wild Flower Group visited Red Hill Nature Reserve near Goulceby. Red Hill is a chalk grassland site and has a wide variety of chalk-loving plants. June proved to be an ideal month to visit, with the Coronation Meadow (named as one of the national Coronation Meadows marking the anniversary of the late Queen's coronation) in full bloom.

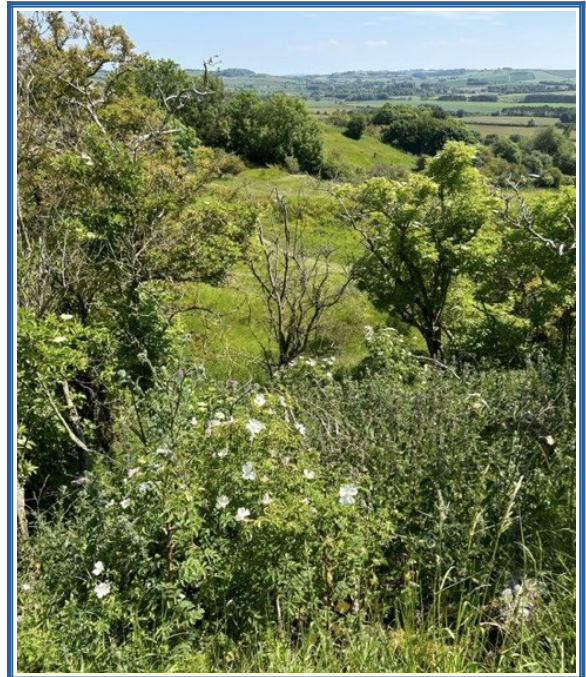


Weld

However, the highlight of our trip was the sighting of bee orchids, which thrive on the poor soil of the chalk upland. These curious flowers appear to have a bee resting on the petals, perhaps to attract a real bee which will bring about pollination.

Red Hill is certainly worth a visit in the summer months; as well as flowers, there were many species of birds and butterflies visible.

Maureen Moscrop



We recorded many examples of chalk grassland plants, including *pyramidal* and *common spotted orchids*, *smooth hawksbeard*, *viper's bugloss*, *meadow clary*, *clary sage*, *meadow cranesbill* and *weld*, a plant which was used to dye cloth a bright yellow.



Bee Orchid

Bird Watching and Wildlife

Gibraltar Point

Six members of the group assembled at the Mere Hide car park at 10.00 a.m. Weather conditions were perfect, a cloudless sky and a cool onshore breeze. As a bonus there was an unusually high tide just after our arrival which was expected to drive birds from the shore and on to the various lagoons.

Consequently we decided to walk down to the shore, visiting two hides on the way.

As soon as we parked we could hear singing whitethroat, a sound which would accompany us for the first hour as we walked through the sea buckthorn.

The first pond provided a nesting black-headed gull and a little grebe with tiny young. From the Mere Hide several species of duck, a coot with young and more little grebes were evident as well as the sounds of singing sedge and reed warbler.

From the second hide we had close views of avocet feeding with the typical side to side movement of their bills.

As we walked towards the shore, with frequent stops to hear and see, we encountered many

singing whitethroats and observed the characteristic dancing song flight of this species, as well as watching a willow warbler uttering its song of softly descending notes at the very top of a hawthorn bush.

On reaching the shore we were staggered to see the erosion of part of the old dune system, which presented a tricky obstacle between the new course of Greenshank Creek and the crumbling bank, as we made our way towards the boardwalk.

The tide was still high but the shore and the sea were entirely devoid of any birdlife and there was little to see as we crossed the saltmarsh to our lunch destination at the visitor centre.

Following lunch we went to the hide overlooking Jackson's Marsh lagoons to check for waders and waterfowl. We were able to add several species of each to bring up our tally to 45, all of which are listed below.

By this time the majority of the party had to leave while two stayed on to cast an eye over Tennyson's Marsh, where they added a further four species, (not listed).

Species Recorded:

<i>Avocet</i>	<i>Cormorant</i>	<i>Lapwing</i>	<i>Pied Wagtail</i>	<i>Shelduck</i>
<i>Black-headed gull</i>	<i>Cuckoo</i>	<i>Linnet</i>	<i>Pochard</i>	<i>Shoveler</i>
<i>Blackcap</i>	<i>Dunnock</i>	<i>Little egret</i>	<i>Redshank</i>	<i>Swallow</i>
<i>Blue tit</i>	<i>Gadwall</i>	<i>Little grebe</i>	<i>Reed bunting</i>	<i>Swift</i>
<i>Canada goose</i>	<i>Goldfinch</i>	<i>Magpie</i>	<i>Reed warbler</i>	<i>Tufted duck</i>
<i>Chaffinch</i>	<i>Greenshank</i>	<i>Mallard</i>	<i>Ringed plover</i>	<i>Whitethroat</i>
<i>Chiffchaff</i>	<i>Greylag goose</i>	<i>Moorhen</i>	<i>Robin</i>	<i>Willow warbler</i>
<i>Common gull</i>	<i>Herring gull</i>	<i>Oystercatcher</i>	<i>Ruff</i>	<i>Woodpigeon</i>
<i>Coot</i>	<i>Jackdaw</i>	<i>Pheasant</i>	<i>Sedge warbler</i>	<i>Wren</i>

John Watt

Canasta

Our first term ends at the end of June and we shall not meet in the months of July and August. We shall resume meeting on the 2nd Thursday in September and every 2nd and 4th Thursdays in September, October and November. No meetings in December.

The subscription will remain at £20 per term provided the membership stays at eleven. I should add that of the current membership of eleven no less than 6 come from Gibson Court!!

There must be others keen to join, no experience is necessary – tuition is free!!

Please email me if you are interested jawpgm1@aol.com

Alan Wright – Group Leader

Croquet

The Croquet Group are seen enjoying their croquet in Jubilee Park. There are some 16 players in the group with an average turnout of members every week of about eight.



L/R John Woodward, Kathrine, Lucille and Mac lining up his shot while others look on.



L/R John Cotton, Pauline Maddison Robert Aspinall and Terry Tyler all looking good after an enjoyable match

The croquet group is now well into the 2023 season and there are u3a members who have signed up to join the group but have not yet shown up at any Tuesday morning meetings. It's not too late to come along and join in. Also, if other u3a members would like to make a late start you will be most welcome.

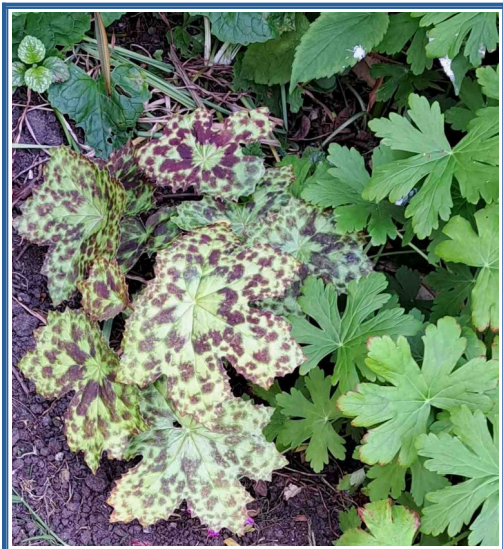
Thanks to the players who show up regularly and enjoy the experience, exercise and the company of others.

Bob Potter – Coach

Gardening

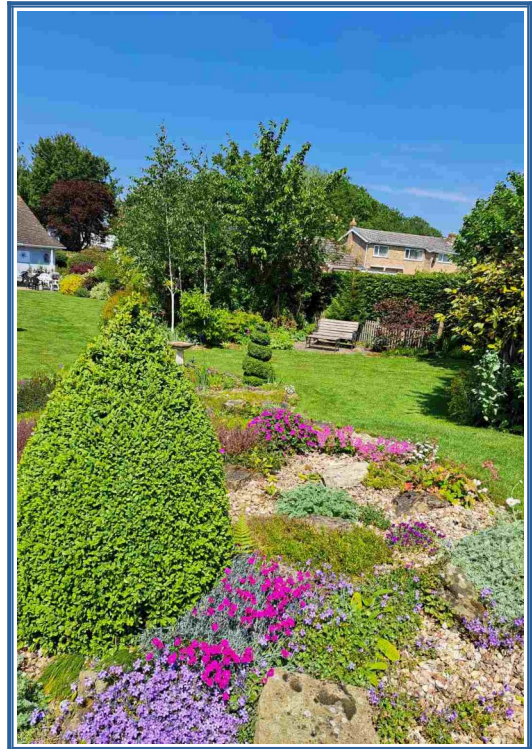
Overbeck

Our June Visit was to "Overbeck" Scothern near Lincoln. This garden is in the National Gardens Scheme, whose members open their private gardens to the public for charity.



Mr and Mrs Good, the owners of the beautiful garden, were very helpful in explaining the planting and the naming of plants and this was much appreciated by the group members.

Heather Colebrook L.V.O



A two third of an acre space which was filled with herbaceous borders of differing colours and packed full of beautiful plants, a haven for wild life, plus a vegetable garden, grasses and fernery, and various interesting shrubs.



Poetry

Two poems from our latest gathering, on the theme of Endings and 'The Shell': the first is the tale of a beautiful found object; the second explores the fun of diversity in our language.

The Shell

*I saw it first beneath the waves
Around the shores of Meganissi
Whilst snorkelling – a different world
Caves with flowing grass and weed so pretty.*

*Pale amber in colour, black lines across
More beautiful than any other around,
Inside an opalescent shade of pearl
A home for hermit crabs within its whorls.*

*How it had got there I'll never know
But I was lucky to see it, and so
I'm happy that it's mine to share
Its rarity and beauty with those who care.*

*Exotic fish – orange, yellow, electric blue
And some of them with rainbow hue.
Diving deeper, nestling on the sandy floor
Was a shell so large two hands were needed
To carry it to the sandy shore.*

*When I came home from my favourite place
An expert confirmed it was not native to Greece
Most likely, he thought, the Caribbean
Indeed a conundrum – a difficult case.*

© Gill Hills 2023

Loose Endings

*When you come to consider some endings
You'll find out there are different kinds
Some are happy or sad
Some are good, some are bad
Or unreal, which play with our minds*

*Sometimes there's a play we're attending
It has a most confusing ending
Our thoughts we are lending
Whilst homewards we are wending
On how badly the end needs amending*

*If you think that this poem's unending
Well, I've come to the end of the line
I hope I'm not offending
With this saga I'm rending
I'm suspending these efforts of mine*

*Perhaps you are doing some mending
Or sending a pal a long letter
Paying bills that are pending
Or a hill you're ascending
Well descending would surely be better*

*The poor author may just need defending
Support to his efforts we're tending
His works he is vending
But we are contending
Then ending needs bending and blending*

© Jean Ellis 2023

Tom Sefton – Group Co-Leader

Use this link to see what else the group has written this month:

[Poetry \(u3asites.org.uk\)](https://u3asites.org.uk/Poetry)

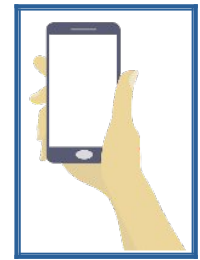
Home Computing for Fun

Choosing a Mobile Phone Network

Part 1 – Coverage in Your Area

When you want to purchase or replace a mobile, things can get complicated. There is the initial decision of which mobile to choose, which depends on your budget and type of operating system eg Android, or Apple.

To a certain extent that is the easy part 🤖🤖🤖



Then there are some confusing options when you have to choose the Network that you want to use. This will provide your SIM card and your phone number (if you already have a mobile it is very easy to keep your existing number with a new provider).

So, what should you consider first?:

Your location

Before anything else, you should look at the network coverage in your area. You can go to this website <https://www.signalchecker.co.uk> and put in your postcode to check your exact location.

Here is a coverage chart of the different networks covering Lincolnshire:

		3G	4G	5G
Three	Indoor	84.7%	58.1%	20.7%
	Outdoor	84.9%	58.3%	20.7%
O2	Indoor	93.5%	97.7%	19.3%
	Outdoor	99.8%	100%	19.3%
Vodafone	Indoor	84.3%	91.7%	0.2%
	Outdoor	99.5%	99.9%	0.2%
EE	Indoor	72.7%	96.9%	30.5%
	Outdoor	89.3%	99.8%	30.5%

So, now you are really confused?!? How do you know which network each provider uses?

Here's a chart to show you:

Uses Three	Uses O2	Uses Vodafone	Uses EE
FreedomPop	Jump	Jump	Jump
Jump	Giffgaff	Asda Mobile	BT
SMARTY	KC Mobile	Lebara	CMLink
iDmobile	Lycamobile	Talk Mobile	Ecotalk
Superdrug	Sky Mobile	Voxi	Extremeconnect
	TalkTalk Mobile*		Now PAYG
	Tesco Mobile		Plusnet Mobile
	Truphone		T-Mobile
	Virgin Mobile**		The Phone Co-op
* TalkTalk mobile no longer sells its own deals, but refers its customers to O2 directly			Utility Warehouse-TelecomPlus
**Following the merger of Virgin Media and O2 in 2021 Virgin Mobile customers will be moved over to O2's network by the end of 2023.			

Next month – Part 2 Choosing a Provider

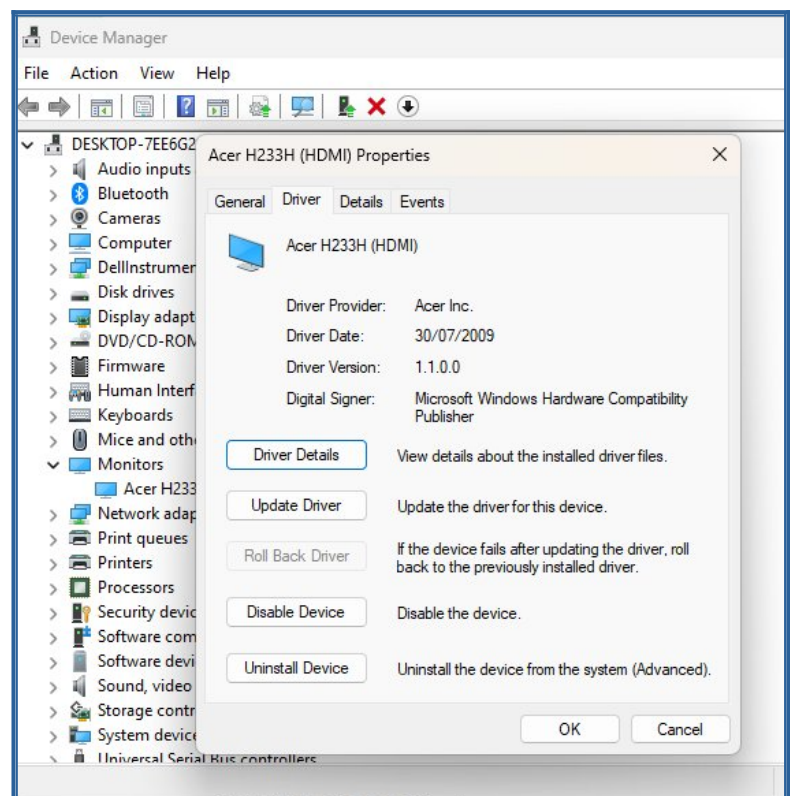
*Home Computing for fun – Continued***Your monthly guide to what it means....****Driver**

In computing terms, a driver is software installed on your computer that allows the operating system to communicate with your devices. In most, but not all cases, the driver software is provided by the device's manufacturer and is normally installed when you connect the device to the computer for the first time.

Over time a driver may need to be updated. Depending on your update settings, this may happen automatically. You can check your settings in Windows Update on a Windows pc or Software Update on Apple Mac.

You can also go to the manufacturer's website and download the latest driver for your device, if one is available.

If you want to see details of the driver for any of your devices, Type Device Manager in the search bar in the taskbar, and open it up. Then select a device and a box will appear with the device details. Click the driver tab and the driver info can be accessed from here.

**Ping**

Ping stands for **Packet Internet Groper** (sic). It is a common term found in internet speed test results, which is used to find out how quickly a data signal travels from one device to another one in a network. Ping is important for checking the time it takes for a packet of data to be transmitted from your device to a server and finally get back to your device.

Heather Maslen – Group Leader

Find out more

If you have any questions about these articles, **or have topics you would like me to cover**, please contact me by clicking on the bird on the Home Computing for Fun page on the Woodhall Spa U3A website

<https://u3asites.org.uk/woodhall-spa/page/115109>

The Final Word

Feedback

You can use this link to view past issues of the Newsletter, or to send a note to the Editor:

<https://u3asites.org.uk/woodhall-spa/page/113917>

If you have any suggestions or comments about the Newsletter I'd be happy to read them. You can email them to me via newsletter@woodhallspa-u3a.org.uk, or use the link above.

Reading Heather's **Home Computing for Fun** pages is always informative, and now Heather has thrown open the pages to cover topics you want to know about, so be sure to send her your questions and requests.

I am indebted, as always, to those who have taken time to contribute to this edition.

Many thanks.

Tom Sefton – Editor

