

# West Cheshire Rural u3a – 1/12/2022



The newsletter is now published monthly on the first of the month. Our email address for contributions is [WCRu3a@hotmail.com](mailto:WCRu3a@hotmail.com) or for membership enquiries contact Dorothy Turpy, our Membership Secretary.

## November Meeting

55 members and 7 potential new members joined us for the talk on the Huxley Hoard in November. What a great audience, one of the largest we have had for a speaker.

We do not have a monthly meeting in December.

In **January** our speaker will be Tom Jones, a Chester Tour Guide who will give us a talk about Chester Zoo. We have been hoping to get a talk about the Zoo for some time so we are looking forward to this one.

In **February** we will have the talk by English Heritage about the Roundhouse at Beeston Castle. This is the talk that was cancelled earlier this year after a mix-up over timings.

## Website Update

As you may be aware the West Cheshire Rural u3a website has been off line this month.

This is a message from the u3a Trust:

**Due to circumstances beyond our control, SiteBuilder websites – used by several our u3as – are down due to technical difficulties with the organisation that hosts the websites. The Third Age Trust (the SiteBuilder volunteers and senior staff) are working very hard to help resolve this. We are in touch regularly with the u3as committees affected and are working towards resolution. If members have any questions, please speak with your u3a committee.**

*Latest Update- the plan is that a version of the website will be available later this week. We will need to add photos back, and make a few updates. Please bear with us.*

The national u3a website and Beacon are unaffected as they are on different systems.

WCRu3a does have a Facebook page. If group leaders have information that they would like to add there in the interim, please contact me using the general email address below.

## West Cheshire Rural u3a – 1/12/2022

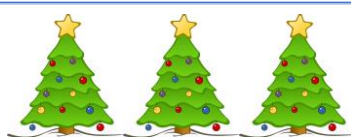
If members need to contact any of the committee or know of any prospective members who want to get in touch with us, here are some useful contact emails.

Our email address for general queries is [wcru3a@hotmail.com](mailto:wcru3a@hotmail.com)

Our email address for membership enquires is [membershipwcru3a@gmail.com](mailto:membershipwcru3a@gmail.com)

### **Invitation from North West Committee to some festive fun**

You may have already received this invite from Gill Russell on behalf of the North West Committee –use the link to register.



*Dear members,*

*On behalf of our regional Chair, Mary Waters, and the members of the NW committee, I would like to offer an invitation to an afternoon of 'Festive Moments' on Zoom on Wednesday December 14th at 4pm. Please try to circulate this to your groups.*

*There will be an opportunity to sing some seasonal songs, hear some light-hearted readings and take part in a quiz.*

*As the NW website is still down you can use this link direct to the registration form <https://forms.gle/UxdxorbUgk7NGCoh6>*

*If you have any problems or queries please contact me on [gillruss71@gmail.com](mailto:gillruss71@gmail.com).*

*Best wishes,*

*Gill Russell*

*(NW regional Vice Chair)*

**Interest Group information** If members have ideas for new interest groups or a hobby that they would perhaps like to share with others, please contact Mike Woollard. Mike can give you guidance on setting up a group.

# West Cheshire Rural u3a – 1/12/2022

## Mah-Jong Group

Mah-jong for Beginners caters for people new to the game who haven't played before. The group isn't suitable for anyone who already has playing experience or is looking to return to the game and needs to refresh their knowledge.

However, if there is enough interest from more experienced players, a second Mah-jong group could easily be set up.

## Music Appreciation Group

The Group now has 12 Members, having restarted last December after the Covid hiatus. We meet every month in the Community Room at St Albans Church, Tattenhall.

We all have varying musical interests and our meetings are relaxed and, hopefully, allow members the opportunity to adequately share their musical experiences and knowledge. We managed to work our way through the alphabet earlier in the year and over several sessions, finding different types of music, composers, and musicians to cover all 26 letters. Last month, we shared recollections of our early musical experiences, or when we discovered music 'new' to us in later life. It was great fun and full of surprises. Our offerings are a very eclectic mix across all types of music.

December's session will be our first anniversary and we will look at 'seasonal' music to suit the time of year. Some pretty obvious examples will likely appear on the day.

Please contact David Thomson if you would like to know more about the Group.

## Ukulele Group

It was good to see Kim back playing with the group this month and Ken & Isabel back from holidays. We have a new song "Islands in the Stream" written by the Bee Gees and originally sung by Dolly Parton and Kenny Rogers. You may also remember the version by Rob Brydon and Ruth Jones in Gavin and Stacy.

## Sunday Lunch Group

In November the group went for lunch at the Alvanley Arms at Cotebrook. A really good lunch was made all the better as we were able to take advantage of a pre-December 25% off offer. Thank you, Colin for organising this meal.

Our December lunch will be at the Grosvenor at Pulford. The carvery was excellent last time we went so hopefully it will live up to expectations.

## Poetry Group

This month's theme at the poetry group was Adventure. It sparked a variety of poems and reminiscences, many about our childhood, when we are probably more adventurous. There were poems about how an adventure can change us and how

## West Cheshire Rural u3a – 1/12/2022

our attitude to adventure and may be risk can change over time. All in all a very good session.

Here are the poems we read:

**Helen Cowles Le Cron – A Book**

**Helen Dunmore – September Rain**

**Henry Longfellow – The Tide Rises, The Tide Falls**

**Henry Longfellow – The Wayside Inn**

**William Meredith – Accident of Birth**

**Charles Dickens - Extract from David Copperfield**

**Rudyard Kipling – A Smugglers Song**

**R.L.Stevenson -Travel**

**Tyler Knott Gregson - I Want a Life Measured**

**Khalil Gibran - The Farewell**

**R.L Stevenson - From a Railway Carriage**

**Edna St Vincent Millay – Travel**

**Edward Thomas – Adlestrop**

**William Cooke – Adlestrop Revisited**

**Jim Yerman – Life is an Adventure**

**Rachel Lyman Field – If Once you Slept on an Island**

**Anon – The Old Man in the Moon**

**John Masefield – Sea Fever**

**Theodor Seuss Geisel – Off to Great Places**

**Robert Service -The Land of Beyond**

**Helen Dunmore – To My Nine-Year-Old Self**

**Tolkein - Extract from the Lord of the Rings**

**Elaine Fienstein – Getting Older**

**Alfred Lord Tennyson – Ulysses**

**Bernard Stone – Charge of the Mouse Brigade**

**Erin Hanson – Returning**

**Rachel C - Grand Adventures**

**Ted Hughes – The Pan**

**Louis MacNeice – The Slow Starter**

**Eugene Friend – Wynken, Blynken and Nod**

The theme for our next session in December is Celebrations.

# West Cheshire Rural u3a – 1/12/2022

## Drawing Group – Carolyn Vickers

The drawing group has met 4 times (5 by the time this newsletter comes out) in Hargrave Village Hall. The subjects so far to challenge our skills have been

- A glass of water, showing any drips
- Drawing the same object from different angles
- Clouds
- Trees

Yet to come for future sessions are:

- Landscape or building observing showing composition and tonal values for perspective
- An animal or bird to show fur or feathers (or scales)

We will meet again alternate Monday afternoons 2pm - 4pm for 6 sessions in the New Year.



## November Short Walk

The short walk in November was led by Catherine McIntosh. The 4-mile walk started at the Memorial Hall car park in Farndon. We enjoyed unseasonably warm weather for November and were rewarded with views towards Beeston Castle and the Sandstone Ridge as we left Farndon and towards the Welsh hills on the return route.

The group ended the walk with lunch at the Hare. The walk is one of three walks on the website of the Hare pub with detailed information and a map

<https://hareatfarndon.co.uk/localwalks>. Many pubs are publicising walks on their website to attract visitors so if you're looking for a walk in an area, it's worth checking the local pub website.



## November Long Walk 24 November 2022

The walk on 24th November, led by David and Lynda Bish, started from Loggerheads Country Park near Mold with 9 walkers, in dry, but cool weather. A recce the previous week had been completed in very wet conditions with heavy rain and the river Alyn in flood, looking very angry!

## West Cheshire Rural u3a – 1/12/2022

We walked along the Leete Path through the gorge towards Cilcain, passing disused lead mine shafts and crossing Devils Gorge Bridge.

Our route was taken from a book of Tea Shop Walks, but modified due to the wet conditions underfoot. When close to Cilcain, we took a path across fields towards Pentre and shortly after crossing the river Nant Gain, the heavens opened! 6 took shelter under a very sparse holly tree, with the remaining 3 of us seeking shelter against a high hedge! After a short stop, we braved the rain, which had subsided slightly, and continued on our way crossing a bridge back over the river Alyn and onto the Leete Path back towards Loggerheads, where, after an enjoyable 6.5-mile walk, we all enjoyed a hot bowl of homemade soup served with chunks of homemade brown bread in the Caffi Florence! All that remained was to drive home in rather damp clothes with the car heater on full, telling ourselves that it doesn't have to be a warm dry summers day to enjoy a walk. David Bish



### Monday Walks



Sue, Carolyn, and Marjorie were free to walk on Monday 31 October. Parking at Gresty's Waste the route followed the Sandstone Trail south into Primrose Wood, then winding their way through the trees, admiring the autumn colours, and spotting some handsome fungi. A road section above Tirley Garth with lovely views brought the group back to the Trail, and to the car park.

## West Cheshire Rural u3a – 1/12/2022

On the 7th the Monday walk was 3.5 miles from Handbridge to Westminster Park, Curzon Park, the Racecourse, Watergate Street where we had coffee, Grosvenor Park, the Groves, the Old Dee Bridge, along the river to and finally through Edgar's Field and back to the cars.



The mini walk on the 21st was from the Sandstone Pub at Brown Knowl. We walked up towards the village, then round the perimeter of the Bickerton Hills for around 4 miles on a drizzly morning. Not surprising that we only saw one other walker. The walk ended with coffee at the recently reopened Sandstone Pub.



### Sandstone Trail Walk



There were 6 of us in the group, walking part of the Sandstone Trail from Duckington National Trust carpark. The 3.5-mile walk was quite straightforward with a couple of uphill bits through the woodlands along the Zig Zag path, coming out on the heathland on the top of the hill.

## West Cheshire Rural u3a – 1/12/2022

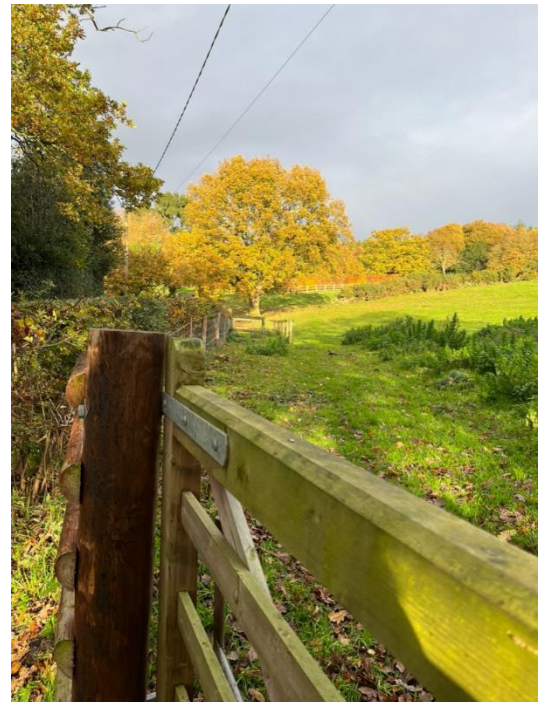
We walked at a leisurely pace, taking 2 hours, and stopping at the viewpoints at The Kitty Stone and Maiden Castle, then returning down the steep steps from Maiden Castle. Again we were lucky with the weather. Wendy Broad



Carol, Kate, Jim, Jeanette, Chris, and Wendy walked part of the Sandstone trail from The Pheasant at Burwardsley for the second walk this month. The walk took just over 1 hour 30 minutes over a distance of about 5km. We started out on the lane towards Beeston and then took the Sandstone Trail path on the right up the steep hill, continuing

along the track to the right, past the fields to the road.

We took the road to the left up to the Sandstone Trail and along to the gatehouse. From here we followed the Sandstone Trail to the top of Bulkeley Hill, returning across the field to Coppermine Lane and then following the track on the right all the way back to the pub, for some light bites and a drink. Despite the monsoon-like rain at times, we had some very interesting conversations and lovely chats. The weather was very wet so these pictures are from the recce the previous day when the weather was so much better.





# West Cheshire Rural u3a – 1/12/2022

## Art Appreciation

On the 8th November members of the Art Group enjoyed a very special visit to the Lady Lever Art Gallery in Port Sunlight for an "Exhibition of Pure Brilliance: The Boodles Story" which showcases the luxury jewellery brand's 225-year story. We were dazzled by the extraordinary jewellery created by this family firm which still has a flagship store in Liverpool today (as well as one in Chester).

The gallery is celebrating its centenary; Lord Leverhulme opened it in 1922 and named it after his wife Elizabeth who died in 1913. A video taken at the time of opening was of great interest. This was a very special day out and enjoyed by all who were able to attend.

Our next visit is on 6th December to The Tate Gallery Liverpool for the Turner Exhibition and afterwards lunch at Gusto's.

## Events organised by National Office and open to u3a members.

u3a Office has a fantastic selection of free online learning events to suit all tastes. If you're looking for something to inspire you. Take a look at the events page:

<https://www.u3a.org.uk/events/educational-events>

## West Cheshire Rural u3a Interest Groups

*All Group Leaders can be contacted using the mail icon on the relevant group page on the website*

Group	Current Meeting Times	Group leader
Map Reading for Walkers	As advertised	Marjorie Watson
Sunday Lunch Group	First Sunday in the month	Anne Bayliss
Solving Cryptic Crosswords	Alternate Mondays at 2pm in the Barbour	Hilary Scarratt
Poetry	First Monday in the month in St Albans Community Room Tattenhall	Gill Foster
Chapter Chats	Last Tuesday in the month at 8pm	Barbara Garner
Pageturners	The third Friday in the month 11.00am in St Albans Community Roo3m Tattenhall	Linda Davenport
Ukulele	Alternate Wednesdays at 10.30 am in Farndon	Ken Wakefield
Walking	Walking groups schedule: <ul style="list-style-type: none"><li>• Short walk on 2nd Thursday</li></ul>	Jill Hughes

## West Cheshire Rural u3a – 1/12/2022

Group	Current Meeting Times	Group leader
	<ul style="list-style-type: none"> <li>• Long walk on 4th Thursday</li> <li>• Other groups on ad-hoc basis</li> </ul>	
Drawing Group	Fortnightly meeting in Hargrave Village Hall	Carolyn Vickers
Dining	Dining Group1 fourth Friday of the Month Dining Group2 second Wednesday of the month	Hazel George Marian Hagan
Home Cinema 2	The cinema-based group has restarted	Pam Baggott
Mah-jong for Beginners	2nd & 4th Fridays at 10.30am Walk Mill Waverton	Linda Davenport & Pauline Bell
Music Appreciation	First Thursday of the month in the community room at St Albans	David Thomson
Historic Houses	2-3 outings during the summer	TBC
Plants & Gardens	2-3 outings during the summer	TBC
Discussion	Alternate Tuesdays in The Barbour	Steven Prince
Art Appreciation	Various visits during the year	Jean Mumford Vanessa Newman