



SARUM u3a Newsletter

Sarum u3a – www.sarumu3a.org.uk

April 2024

No 254

New Members

New members since last month are Richard Gillard, Will Richardson, Roger Walker and Christine Shaw.. We welcome them to Sarum u3a.

Monthly Meetings

All the monthly meetings are held on the third Wednesday of the month at St Francis Church, Castle Road. The Church is open from 9:30 and coffee and biscuits are served from 10:00 before the guest speaker's talk begins at 10:30.

April Meeting

The talk at the April meeting is by Gale Pettifer Ans is entitled 'Heart of Oak: The 18th Century Naval Timber Crisis and the New Forest

During the eighteenth century there was a widely held belief that Britain was suffering from 'a great Scarcity of Timber' and more particularly 'that sort of which our ships are constructed'.

The belief led to proposals for the New Forest, in Hampshire, to be enclosed for timber production and the remainder to be sold by public sale. But was this modern history's first instance of 'fake news'?

This informative and entertaining talk reveals how changes in the relationship between Parliament and the Monarchy, during the reign of George III, exposed corruption, abuse, and incompetence in the management of the Crown lands and, as a result, just how close the New Forest, one of Britain's most iconic landscapes, came to being lost to future generations.

- | | |
|-----------------------------|--|
| May 15th | Groups Exhibition |
| June 19th | Ian Caskie – Brunel's Great Britain |
| July 17th | Roger Hirons - The Plant Doctor - Growing to Eat |

Community Car Driving

I and several other members of Sarum u3a do volunteer driving for Community Transport South Wiltshire (CTSW). Some of our members also benefit from the service, which helps people who are unable to drive themselves about for one reason or another. It is an excellent service, much appreciated by its users, but sadly there is always a shortage of drivers. The admin backup is first-class and there is a small mileage allowance. If you feel able to give up even a couple of hours a week to help and would like to know more about the service feel free to talk to me (07887 350032), call CTSW directly on 01722 410123 or email them at ctswsalisbury@outlook.com.

-Andrew Smith Membership Secretary

Members Reports

Walkers 4=5 Miles

This month's 4.65-mile walk is on Thursday 25th April. Meet at the Tinney's Firs carpark, grid ref: 202 197. Go through Woodfalls on the B3080 from Downton and turn left shortly after the Woodfalls Inn and the sports ground. At that junction it is left and quickly left again towards Lover. Please arrive at 9:45 for a prompt start at 10am. No toilets until we get to the pub for lunch! We start off on pavement and footpath then farm tracks and woodland which can be very muddy in places if we continue to have wet weather, so good walking boots recommended. The Inn is booked for lunch but they would like a week's notice of choices. They have sent me a menu which I can email to you. Please let me know by Tuesday 16th April if you are coming and I will send you the menu – please send a response immediately! Here's hoping it's a lovely Spring walk!

Barbara Smith. Barbara@nuthatch.net or phone 07715176401.

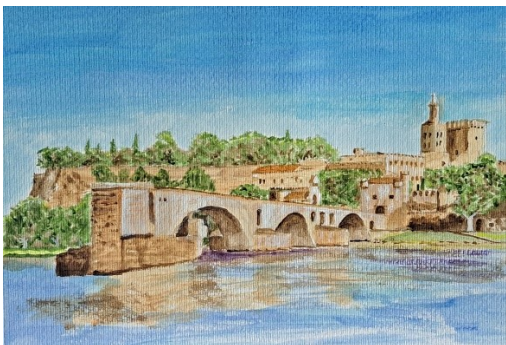
March Walk

Our March walk was even more wet & windy than February. Here are the survivors in the pub afterwards. We hope for drier weather next time.

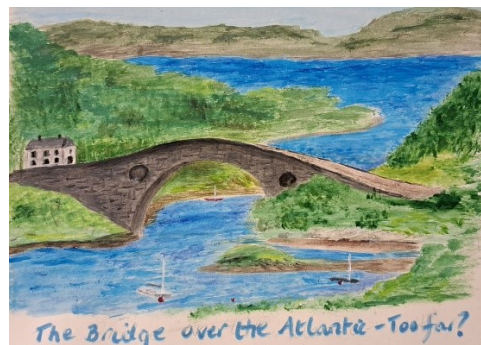


Painting for Pleasure

The Painting for Pleasure Monday morning group have been busy again this term with an interesting range of topics set by one of our members, all with the theme of film titles. It was stressed that we weren't to simply take a scene from the film or copy the poster but, rather, to re-interpret the concept of the title in our own inimitable way. It was great fun and certainly tested the Little Grey Cells somewhat. We hope you enjoy our selection (one from each member).
David & Linda Whetton



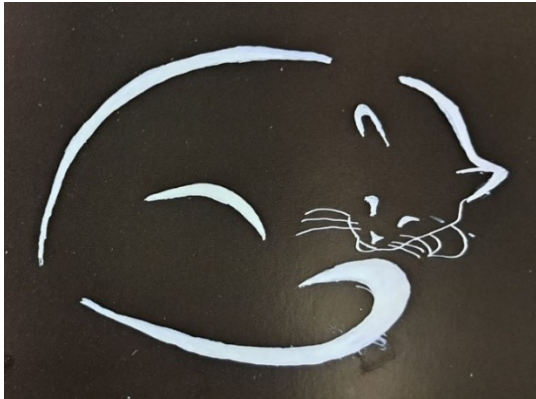
Avignon
Andrew Smith



Clachan Bridge
Barbara Smith



Frozen
Carol Knight



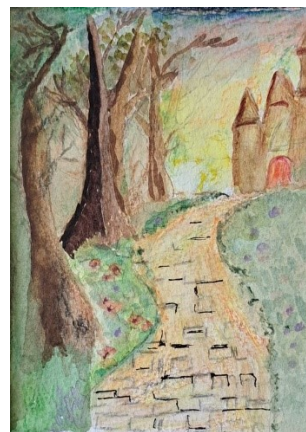
A Black & White Cat
David Miesner



Dambusters
David Whetton



Lady in Blue
Eli Cimachowska



The Yellow Brick Road
Kate Miesner



A Siamese Kitten in -Pastel
Elaine Evernden



Frozen
Heather Sheeley



Frozen
Jackie Lemiere



Frozen
James Thompson



Gone
Linda Farrow



The Cruel Sea
Margaret Thomas



The Cruel Sea
Peter Snith



Papillon
Rosalind Rollett



Bridge and Stream
Val Manning

U3A Choir

From Henry VIII to the present

The Salisbury U3A Choir has been working on music spanning six centuries (starting with a work by Henry VIII) and will be giving its Spring Concert on Monday April 15. The choir has members from all the local U3As and meets weekly from September to April. Its musical director is David Davies.

The concert, to which all are welcome, will be in Wilton Community Centre (opposite the Italianate Church) at 2.15pm and there will be refreshments afterwards. If you have any questions or are interested in joining the choir, contact David on 01722 714440.

Croquet

The croquet season is about to start again.

We play every Wednesday afternoon between 1:30pm and 3:30pm at the South Wilts Sports Club on Wilton Road, immediately next to the hockey pitches. The season will begin on Wednesday 1st of May and continue until September. Lots of fresh air and, hopefully, sunshine!

There is an initial fee of £15.00 fee for membership to the Sports Club and a weekly fee of £1.00 thereafter.

Would all those who would like to take part please e-mail us to let us know (then we will also have your contact details). Our details are: -

Tony Gill – tonyhomeqs@ymail.com (01722325462; mobile 07833901228)

Zena Gill – zenashojaei@yahoo.co.uk (01722325462; mobile 07732 129013)

Shuffleboard

Over the Easter weekend, Jan & Alan Biles and Carol Knight from the Sarum U3A shuffleboard group travelled to Norwich to take part in an open tournament. It was a doubles competition with visiting players from the USA, Germany, Austria and the UK and pairs were drawn at random at the Meet & Greet before the competition. Carol Knight did well in what was her first serious competition and finished in the top ten with her German partner. Alan & Jan did less well as they spent most of the first day at Norwich Hospital A&E after Jan tripped on a mat and broke her arm in the subsequent fall. Despite this she managed to play one game left-handed with her arm in a sling before a substitute was found.

The shuffleboard group is running down for the summer but will re-start at Wilton Community Hall in September.



Summer bus trips to Bournemouth

May to October - 2nd Thursday of the month.

Starting next month on 9th May. 9.55 am X3 bus in Blue Bore Row. To include a bit of a walk, a cafe, or a trip along the coast; whatever the weather allows. We don't have to stay together if

someone wants to do their own thing (perhaps a swim ?) This group will be additional to the Saturday bus trips organised by Jean Lennon.

Please let me know if you would be interested and would like to join us.

Marilyn Beattie 01722 320216, 07721182963,

email: mjbt68@gmail.com

From the Editor

The pictures of this month are those from the painting for Pleasure Group. Deadline for the May issue will be Sunday 5th May. I welcome any reports from our Groups illustrating what they are doing. Also, any pictures on ongoing activities will be welcome. But could senders ensure that all people appearing in pictures are agreeable for their image to appear in the Newsletter.

Ed Garman

Sarum u3a Newsletter Editor

8 Old Street, Harnham

Salisbury, SP2 8JL

edwin.garman@btinternet.com

Tel 01722 415210