



# April

## Our Monthly General Meetings

Kirby Misperton Village Hall 2nd Tuesday of the month

Refreshments from 9.45 am Speaker from 10.30 am

£2.50 admin charge - cash or card payment

*Happy to see members earlier If you are able to help us set up!*

The next meeting is

Tuesday 9th April

The Life and Times of Margaret More Roper -  
the eldest daughter of Sir Thomas More

by Aimee Fleming (Writer & Historian)



# Newsletter Deadline

Submissions for the May edition,  
please send to

[newsletter@ryedaleu3a.org.uk](mailto:newsletter@ryedaleu3a.org.uk)

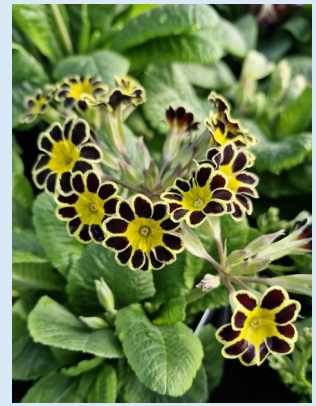
by 15th April 2024

### A warm welcome to new members:

Helen and Robert Gardiner,  
Great Habton

Kenneth Rowe, Pickering

Margaret & Gary Piddington,  
Welburn



### Books

100s to choose from

3 for £1

### Jigsaws

Just £1 each

### Members Table

For news, updates, info, or a chat

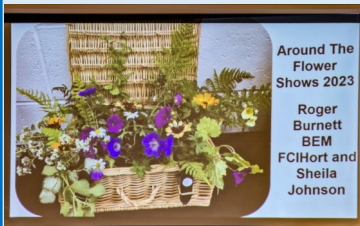


### In this edition

- P2 Review of March meeting
- Did you know?
- P3 Newsletter deliveries/  
Coffee mornings
- P4-6 Group news
- P7-8 Walking Groups
- Outing to Veolia -  
Recycling Plant
- P9 Future Lives Group
- P10 Quiz

Some images designed by  
*Freepik*

## Review of March meeting



Around The Flower Shows 2023  
Roger Burnett BEM FCIHort and Sheila Johnson



Useful links

Website

<https://u3asites.org.uk/ryedale/welcome>

Facebook

Search for Ryedale u3a or go to

[www.facebook.com/groups/735185998380262](http://www.facebook.com/groups/735185998380262)

# April

Excerpt from

'The Folklore Year'  
Historic UK

Roger Burnett, from the Scarborough Parks Department and a part-time judge for the RHS, and Sheila Johnson, his equally enthusiastic assistant, took us on a seasonal tour around National and Local flower and produce shows.

We began our journey with the Harrogate Spring Flower Show travelling to many places including Malvern, Tatton Park, Lincolnshire (for the recently formed pond plants show), Wensleydale, Sussex, Southport and, the cream of the crop, Chelsea. If you want to see perfection this is the place to go. But they also emphasised the value of Local Shows and we viewed examples from Malton and Brompton by Sawdon.

Throughout, with many colourful illustrations, Roger and Sheila spoke with passion about their work and the importance of creativity and display when exhibiting at these events. It was obvious that many hours and even days were spent when setting up their displays.

We were entertained with many anecdotes, including one where it caused astonishment that all the blooms were the same size when, in fact, Roger had used scissors to trim off the unsightly bits, and viewed a photograph of Roger meeting our now King and Queen. Roger proved himself quite the stand-up comic and often had us laughing. A highly entertaining talk.

---

### Did you know?

All Fools' Day, also known as April Fools' Day, is a time for the traditional playing of pranks upon unsuspecting people...the victim being known as the April Fool. The current All Fools' Day tradition can be traced back to 16th century France, when the beginning of the New Year was originally observed on April 1. This was celebrated then, as New Year is today, with parties and dancing late into the night. In 1582, however, during the reign of the French King Charles IX, Pope Gregory introduced a revised calendar for the Christian world which meant that New Year fell on January 1. Since it took some time for many people to hear word of the change (communications being what they were in the 16th century), New Year's Day continued to be celebrated on the first day of April in many areas. The more stubborn simply refused to accept the change. People who had accepted the dates of the new calendar played tricks on those who had not and referred to the victims of such pranks as "April Fools," sending them on a "fool's errand".

This evolved into an annual tradition, migrating to England and Scotland during the 18th Century and was introduced to the American colonies by British and French settlers.

Tradition dictates that pranking must stop at noon.

The style of the pranks has changed over the years. Sending unsuspecting folk on pointless errands was a particularly prized practical joke in the early days. Modern pranks tend to centre more on bogus telephone calls and newspaper stories.

The primary aim behind April Fools' Day jokes and pranks are that they should be able to be enjoyed by everyone ...especially the person upon whom the joke is played.

# Newsletter

Available from pick-up points  
usually by the end of each month

<b>Malton area</b>	Malton Library, St Michaels Street
<b>Norton area</b>	Norton Hive Community Library, Commercial St
<b>Pickering area</b>	Pickering Memorial Hall, Potter Hill
<b>Thornton-le-Dale</b>	Hand delivered by member Jean Leggott
<b>Kirkbymoorside</b>	Kirkbymoorside Library, High Market Place
<b>Helmsley</b>	Helmsley Community Library, Helmsley Town Hall

If you can pick up one or two for members who live near you, it would be much appreciated.

If you are unable to get to a pick-up point:  
please contact Judi on 07966 156944

If you would like to receive it by post:  
please send a book of 2nd class stamps to Judi Watkinson,  
13 Woodlands Avenue, Norton, Malton YO17 9DB

## Refreshment Rota Coordinator / Chairs Rota

Please consider joining the rota or maybe just be called on at short notice if a named person cannot attend. Contact [janetcook956@gmail.com](mailto:janetcook956@gmail.com)

We also need volunteers to help put out the chairs for the meeting. If able to join this rota please contact **Martin Sleeman via [membership@ryedaleu3a.org.uk](mailto:membership@ryedaleu3a.org.uk)**

### Refreshments volunteers for April

Valerie and Ken Chadwick

## Kingfisher Coffee Morning, Malton

Our newest committee members, Pat Davis and Janet Cook, went to along to “meet and greet” members at the March coffee morning, providing information for any potential new members calling in and joining in the lively discussions. Pat says “It was very busy. It flew by. Very enjoyable.”

## Forest & Vale Coffee Morning, Pickering

We are hoping to start another monthly coffee morning on the third Thursday of the month in Pickering. Jean Leggott will be there to welcome members for the first session, however we will only be able to make this a regular event if a volunteer or two to comes forward to help get it off the ground - hopefully this will become as successful as the Malton one.

**First meeting 17 April 2024 10 - 12 am**

*You're only given a little  
spark of madness. You  
mustn't lose it.*

*Robin Williams*

*I am an early bird and a  
night owl... so I am wise and  
I have worms.*

*Michael Scott*



### Kingfisher Café Coffee Morning Drop-in

Kingfisher Café  
Saville Street, Malton  
First Thursday of month  
10 - 12 am

### Forest & Vale Pickering Coffee Morning Drop-in

Third Thursday of month  
10—12 am

## Ryedale Group News



### Groups Coordinator

Our Groups Coordinator is temporarily unable to cover the role for the next few months - in the meantime, if you have any queries, or wish to set up an interest group please contact

[info@ryedaleu3a.org.uk](mailto:info@ryedaleu3a.org.uk)



### Group Updates

There has been some interest in learning **British Sign Language** and we are hoping to offer this course. At present, we have been unable to find a tutor to run it.

If you know of anyone who could help with this, please let us know.

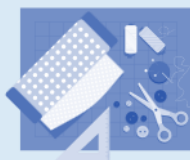
Contact [info@ryedaleu3a.org.uk](mailto:info@ryedaleu3a.org.uk)



**Don't forget to send in your booking form for the visit to RHS Bridgewater on 13 June 2024. Deadline for booking is 3rd May 2024.**

For further information contact Judith O'Donnell ([judithod@hotmail.co.uk](mailto:judithod@hotmail.co.uk))

**Sewing Bee      Susan Dawidek    [smstark29@yahoo.com](mailto:smstark29@yahoo.com)      07922 093028**



A meeting to discuss starting a Sewing Bee group took place on Thursday 14th March. Seven of us met to discuss what form the group should take and where and when it would be best to hold following meetings.

We all gave a little potted history of our sewing/knitting/crocheting experience and what skills we would like to learn. It was agreed the group will not be confined to purely needle (sewing/knitting/crocheting) activities but include other related "making" activities such as craft projects. We also thought it would be fun and interesting to organise trips to Stitching and Knitting exhibitions and local fabric stores to replenish our stashes (all the fabric/supplies you just have to buy to complete a project in the future)!

In summary, it was decided to look for a regular meeting place somewhere in Malton or Norton areas, as the attendees all come from this part of Ryedale, and that we would meet on the second Thursday of the month in the afternoon.

To keep up the momentum, whilst we sort out the finer details, we will be meeting again on Thursday 11th April, in Settrington again, when we will aim to bring along our current projects and continue to discuss the plans for the group.

If you would be interested in joining us on the 11th April please contact me for more information.

We may well change our name in April so keep looking out in the newsletter for any updates.

**Garden Group Yvonne Yates ylyates@btinternet.com 07834 536540**

The gardening group resumed on 21 February at the garden of Valerie Chadwick. Luckily the rain passed but the snowdrops let us down. They were nearly over and had been disappointing this year. Maybe the constant wet had affected them. There were hellebores, primroses and crocus, so something to look at. We all met in the kitchen for tea and cake and there was lots of happy chat.

*Valerie*

Next meeting is on **Wednesday 17th April at 2pm** in Settrington.

This will be a plant swop, and a Gardener's Question Time type session providing an opportunity for us to share ideas and pool our "expertise"! The meeting will be held at Susan Dawidek's house. Please email for more information and to give an idea of numbers attending.

**Susan Dawidek smstark29@yahoo.com 07922 093028**

**Birdwatching Group Diana and Terry Smith dvandtw95@gmail.com**

In March we visited North Cave Wetlands Nature Reserve (Yorkshire Wildlife Trust), near Market Weighton. The Reserve is a restored quarry (there is an active quarry adjacent), which provides a mix of excellent habitats. There are numerous lakes, reed beds, hedgerows and wooded fringes. The conditions were rather poor, cold, damp and muddy underfoot, but there was plenty of birdlife, including four Avocets, always a pleasure to see returning early in the Spring. After lunch, we had a brief visit to Millington Woods, near Pocklington. These woods are a mixture of conifer and broadleaf trees which, given the conditions, were rather quiet. We did, however, have an excellent sighting of a Treecreeper ascending a tree and feeding.

**Cycling David Holmes 07713 520569 dholmes956@gmail.com**

Having valiantly coped with winter rides, the Cycling Group are looking forward to more balmy spring weather. The 26th April ride is Great Barugh to Nunnington Old Yard cafe and for 31st May, drive to Easingwold and ride a northerly loop with refreshments in Coxwold.

**Psychology Group Barbara Dransfield 07841 261026  
barbara.dransfield23@gmail.com**

The group meets 2pm on the 3rd Tuesday of the month. Our sessions run on the basis that a presentation outlining and illustrating a chosen topic leads on to (inevitably lively) discussion - all interrupted at some point by tea and biscuits.

If you're interested to join in, please do get in touch.





### **New Group Idea**

Are you struggling to use your smartphone?

Do you know how to use Apps?

Do you have problems trying to pay for car parking by phone?

We have been asked to put together a short course on using your smart phone.

Please let us know if you are interested.

Contact [newsletter@ryedaleu3a.org](mailto:newsletter@ryedaleu3a.org)



### **Literature Jean Leggott    jeanleggott@gmail.com    01751 475093**

Our February meeting looked at the life and work of Bradford born J. B. Priestley . He wrote numerous books and plays, far more than we imagined. He was also a broadcaster during the 2nd World War. His themes were built around social responsibility and social reforms.

Please get in touch if you would like to join us. Our next meeting is on Monday 25th March involving any literature using the topic of ‘The Sea ‘. This will be followed by:

April 29th    Gertrude Bell

May 27th    Letter Writing

June 24th    D. H. Lawrence



### **Mahjong**

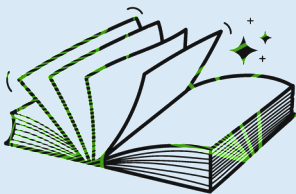
**Sue Myers**

**sueblackmun@gmail.com**

**07876 571940**

**01723 859987**

We meet every 2nd and 4th Wednesdays of the month 10.30-12.30 at Thornton le Dale Village Hall. There is plenty of space for more people, and knowledgeable players willing to teach new members the game. Plus coffee and biscuits at half time!



### **East Book Group**

**Sue Myers sue.myers2@btinternet.com**

**01723 859987**

**07876 571940**

We meet every 3rd Friday of the month.

The next meeting is on Friday 19th April at 2 pm at Sue Myers', discussing Nobody's Fool by Richard Russo .



### **TAIJI**

**Christine Roberts Holland**

**01653 695099**

**crobertsholland@gmail.com**

Taiji will resume after Easter on Monday 8th April at 9.30 am in the Memorial Hall, Old Malton, and continue until July with breaks for bank holidays. New members are welcome, just turn up or contact me for more information.



## Walking Groups

Short walks Susan Dawidek 07922 093028 smstark29@yahoo.co.uk

Medium walks Sheila Barnes 07741 493360 sab.greenlands@gmail.com

Long walks & 10-12 milers Jennifer Robinson 07886 869281

jar.doha@gmail.com

*For specific details of walks contact the named walk leader*

### Short Walking Group

We had a good turn out for our walk from Levisham to Skelton Tower on 13th March. It was a very enjoyable walk in the best weather we have encountered for months. The ground underfoot was much better than we had expected, considering the weather recently. We took a break when we reached the tower to admire the

view across the Moors, and down to the valley where the NYMR runs. We completed the morning by retiring to Steam and Moorland for coffee and sausage rolls!



If you would like to join us please contact

Susan Dawidek smstark29@yahoo.co.uk 07922 093028

### April short walk

Date Wednesday 10th April 9.45 for 10 am

Start Central car park in Goathland parking charges apply

Distance 4.5 miles circular

Contact Susan Dawidek 07922 093028 smstark29@yahoo.co.uk

### Medium Walk Group

Please contact Sheila sab.greenlands@gmail.com 07741 493360

### April medium walk

Date Tuesday 2nd April 10 am

Start Lowna Bridge SE 686 910

Distance 5.75 miles

Contact Ken 07733 004074 or Sheila 07741 493360 if unable to come



# Outing!

Cost £25.00 per person

Group limited to 15

Malton only pick-up point

NB - 6 flights of stairs

(no lifts)

Arms & legs to be covered  
and sturdy shoes required

Application form with  
newsletter

## May medium walk

Date Tuesday 7th May 10 am  
Start Harome  
Distance 6.5 miles easy  
Contact Peter 07711 256311  
or Sheila 07741 493360 if unable to come

## April long walk

Date Tuesday 16th April 10 am  
Start Old Byland village green SE 549 858  
Distance 7.25 miles  
Contact Michael Richardson 01751 477131 richardsonmandv@btinternet.com

## April 10-12 miler

Date Tuesday 23rd April 9.30 am  
Start Ford in Wheeldale - 4miles north of Stape on road to Egton Bridge  
SE 800 991 What3words paths-lilac-include  
Distance 10.5 miles  
Contact Eric Wesson 07845 979578 ericwesson@gmail.com

## Tour of the Veolia Recycling Plant, Leeds 23 May 2024



Are you interested in recycling and conserving natural resources?

Where do all black bags and bins in Leeds end up?

Want to know how this sophisticated engineering plant works with household and commercial waste?

**The Veolia Recycling and Energy Recovery Facility in Leeds** is one of several facilities in the UK that are designed to remove and process recyclable material from bins and significantly reducing the amount of waste that is sent to landfill.

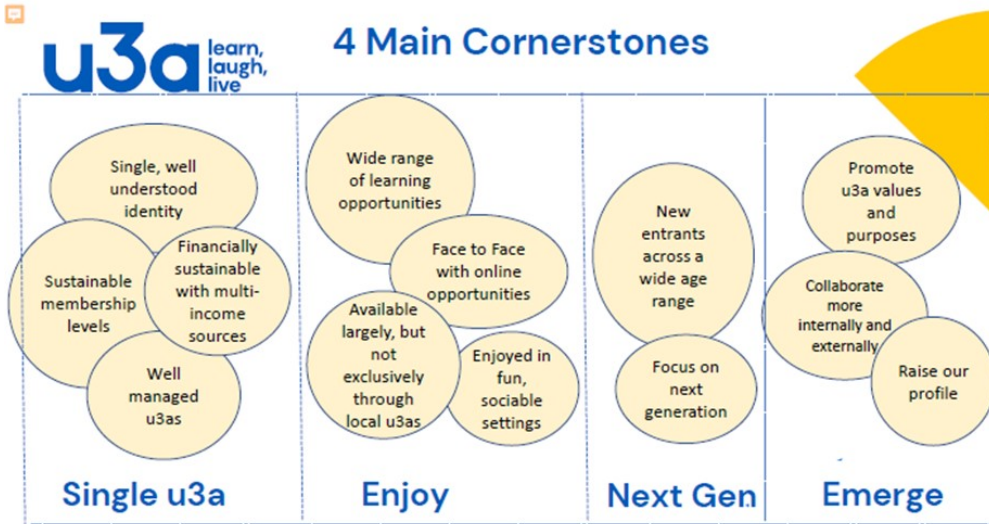
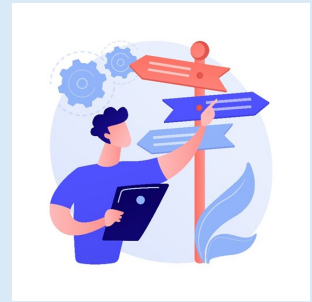
If you're interested to go on a 2 hour tour of this fascinating recycling facility in Leeds, (see note at side) finishing with lunch/refreshments at Roundhay Park (cost not included) please complete the form and send/email to David Holmes, Snowden Cottage, 18 West Street, Swinton, Malton YO17 6SP ([treasurer@ryedaleu3a.org.uk](mailto:treasurer@ryedaleu3a.org.uk))

**Closing date Monday 6 May (early booking advised)**



## FUTURE LIVES GROUP UPDATE

Members of the Future Lives group met up in London to discuss and plan our programme for the year ahead. We usually meet via Zoom so it was good to actually meet members face-to-face. We have many areas represented on this group London, Brighton, Dunstable, Lichfield, Yorkshire & Humber, Newcastle. London seemed the best connection point for us all to meet up - it didn't work out so well for me getting back, but that's another story!



We looked at the structure the Third Age Trust is working on - covering four main cornerstones as outlined above, and how our Group would fit into that picture - which is likely to be in the Emerge section, under communications.

FLG already has its own aims - which is to **Inspire, Influence and Inform** - which it was hoped we had made a good start on.

Our priorities for the coming year are to maintain our inspiring online programme of speakers on different topics including brain health, housing options, digital connections, fashion, as well as a series of interactive events encouraging debate on different themes.

We are currently preparing a new "Resources" page on the national u3a website (which can also be put on our own website if you are more likely to use that) with information sources related to four key themes (this can be expanded later)

- Homes for our future
- Keeping healthy
- Communities connecting
- Digital life and legacy

All these areas are ones that at some time we will want to find out more information - hopefully our resources page and our talks will signpost members to find out where they can get help.

If you want more information on our work please get in touch

Judi Watkinson [secretary@ryedaleu3a.org.uk](mailto:secretary@ryedaleu3a.org.uk)

### Encyclopedia Nonsensica

Swedish astronomer Anders Celsius died in 1744 aged 43, though his rival Fahrenheit was convinced he was 109.

The first surrealist boxer was Muhammad Dali.



**Answers for BirdsQuiz:**

Sir Christopher Wren, Florence Nightingale, Dean Martin, Swallows and Amazons, One Flew Over The Cuckoo's Nest, Philip Larkin, Taylor Swift, 8 void, Black Swan Green, Russell Crowe, Jay Leno, The Owl who was afraid of the Dark, Nightingale, Clarice Starling, The Wings of the Dove, The Lark Ascending, Jonathan Swift, Flaubert's Parrot, Dickie Bird, The Cuckoo, The Little Sparrow, Auk, Cockatoo/Bellbird, Barnacle Goose, Hawk or Kite, Guttersnipe, Culture Vulture, Mudlarks.

Four entries this month: Judy Catterall and Team Pickering (27/27), Alan & Chris Kirkwood (26/27), Robert & Daphne Evans, (25/27).

I have not counted answers to Q8 as question was incorrect!

Thank you all for taking part.

Send entries to:  
 Judi Watkinson,  
 13 Woodlands Avenue, Norton,  
 Malton YO17 9DB  
 judiwatkinson@gmail.com



**THE LETTER 'X'**

Each answer is a word containing the letter 'X'

1	Adept in using both hands (12)	
2	Banish former partner to French island (5)	
3	Unknown person fought to get a games console (1-3)	
4	Arrival is in transition (6)	
5	Composite name for the 3 Low Countries of Europe (7)	
6	Also known as Bacillus anthracis (7)	
7	Inspects former leading African coal pits (8)	
8	Having a smooth, pale, translucent appearance (5)	
9	A corkscrew shape or tv series (5)	
10	Fan that a dentist might use? (9)	
11	Against the ending? What a let down (10)	
12	Xe, atomic number 54 (5)	
13	Live through to maturity (10)	
14	An ancient manuscript text in book form (5)	
15	Fuel from foxy len escaped us (6)	
16	Anna Wrecks Ear? Hearing disorder to do with eating (8)	
17	The lower surface of a leaf (7)	
18	A Green Street? (6)	
19	Premium cocktail bar in Brum - wear your best jewels (6,6)	
20	Alex rotated wheel shaft (4)	
21	A body part who's exact purpose is unknown (8)	
22	Sing after XQ was said to be making allowances (8)	
23	Showing considerable prowess (9)	
24	Far reaching Eve admits engineer is next (9)	
25	Manx Rites is great for soft landings (9)	