

Setting up U3A Audio connections in St Peter's Church.

On the back wall of the church at the end of the fixed bench are the connections to the church sound and projection system.





The computer is placed on a small table which is normally located behind the altar at the front of the church



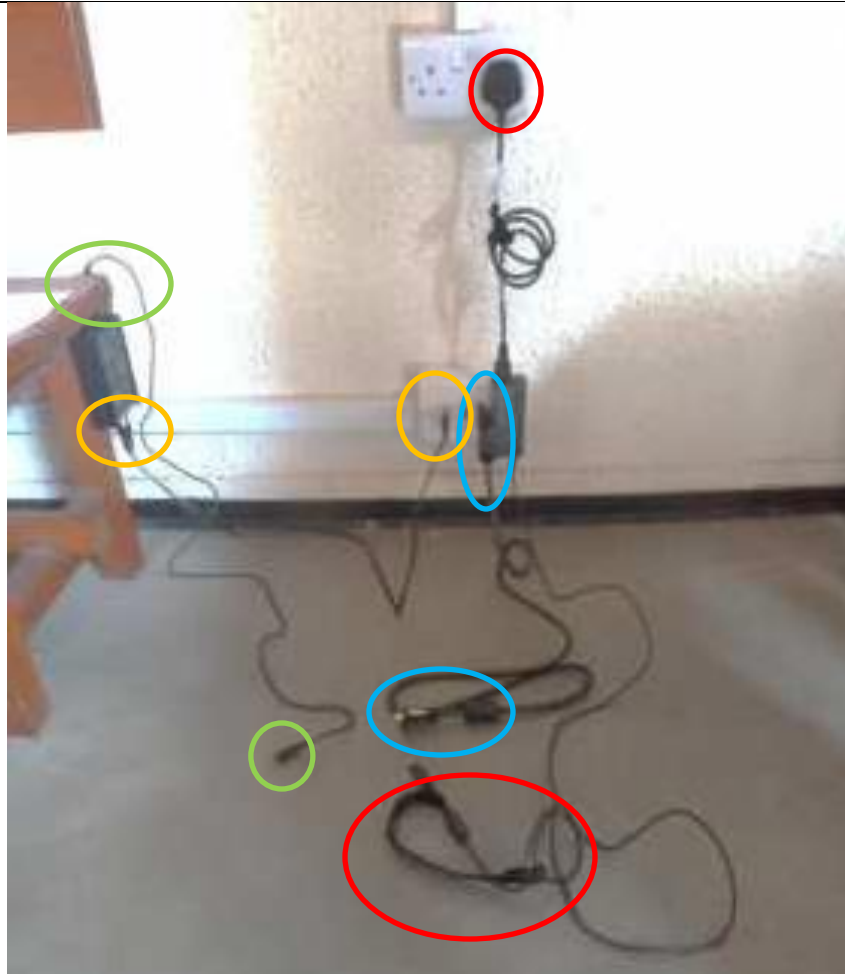
There are 4 connections to be made

 Power from the wall socket to the computer .

 The screen display from the computer to the wall mounted church projector.

 From the headphones outlet on the computer to the input of church sound junction box.

 From the output of the sound junction box to the church sound system.



Connect the sound lead from the output of the junction box to the church sound system.



Complete the connections to the computer.

- Power to the computer.**
- Screen output from the computer to the church projector.**
- Headphone output from the computer to the church sound junction box**



The church sound junction box has 3 volume positions. Switch on the underside of casing.

**Nearest the altar LOW
Middle MEDIUM
Nearest to the Wall. HIGH**

Adjust to suit the sound output to the church system and tweet using the volume adjustment on the computer.



The Switch for power to the church projector is located in the church kitchen.

Make sure this is switched ON.



The wall mounted projector is switched on using the controller shown below the projector image.

There will be a warming up delay when you switch it on, so don't click it a second time as this will switch it off again.

The wall mounted screen is controlled by the controller shown below the screen image.



The hand held remote controller will provide control of the computer images, as required through the presentation.

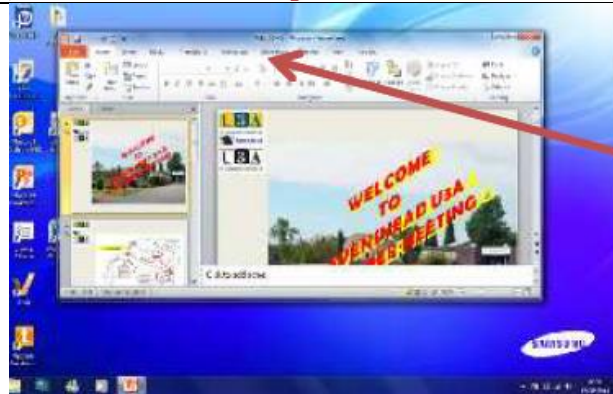
Open the back and remove the receiver which is placed in the USB port of the computer. Check the state of the battery.



Click on the icon shown to load the presentation.

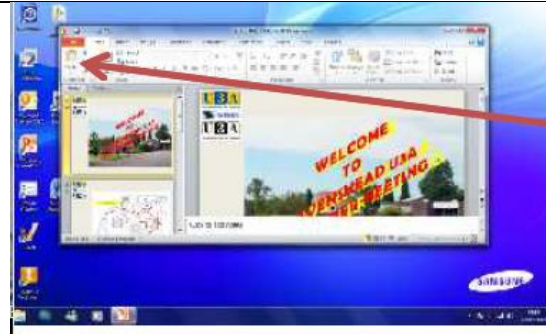


Click on 'Slide show' to start the wallpaper slides.



To run the slide show click on "from the beginning"

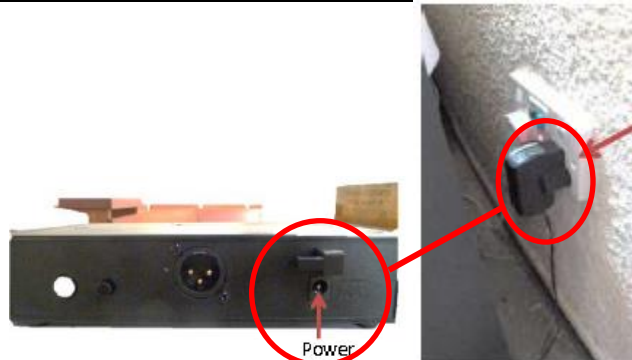
The end the slide show press the escape key (top left of keyboard)



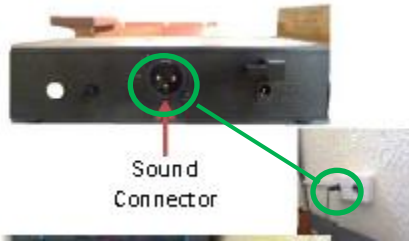
Contents of the microphone set are shown in this photograph



Use the power lead from the microphone case to connect between the radio transmitter and the power outlet of the wall in the front left hand corner of the church.

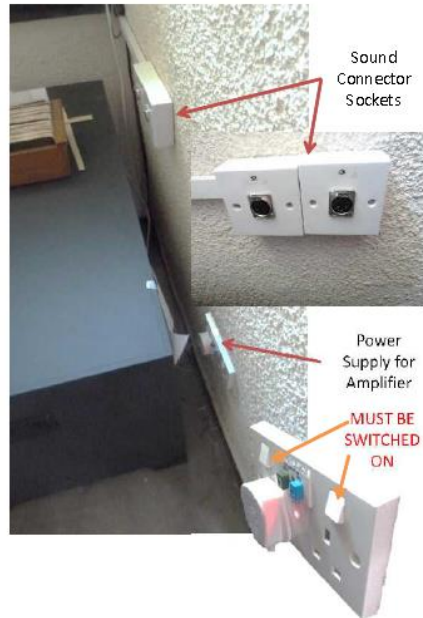


Use the sound connector lead, to connect the sound transmitter to the church sound system.



Photos showing location of church sound connections.

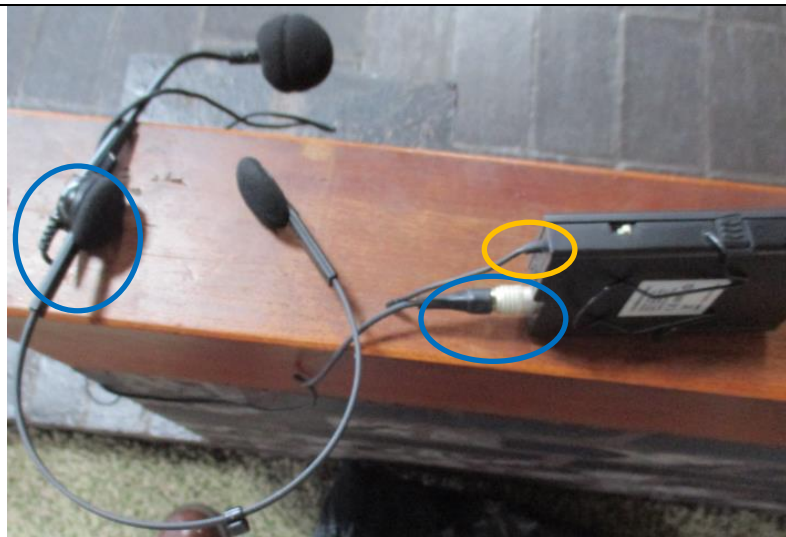
Connect the sound connection transmitter unit to these wall mounted sockets.



The headset microphone and battery powered transmitter.

 **Sound connection cable between microphone and transmitter.**

 **Short transmitter antenna cable**



To check and replace the batteries hold down the lock panel on the side of the case and slide the case open.



On the side of the transmitter. Set the transmitter strength as shown.



Make sure the transmitter power is switched ON. Hold the button down for a period of about 1 second and release, watch to make sure the green LED is illuminated. (not an immediate reaction)



An alternative use of two U3a owned loudspeakers.

A general view of the master loudspeaker.

○ Sound connection between transmitter and master loud speaker.

○ Mains power connection for transmitter.

○ Connection between master and second loudspeaker.

○ Mains power connection for Loudspeaker



Set the volume and bass control knobs to the positions shown, as a starting position for testing the sound performance.



Alan Paul and Terry More 7.7.16