



PARK NOTTINGHAM u3a

NEWSLETTER

JUNE 2023



www.parknottinghamu3a.org.uk

MESSAGE FROM THE CHAIR

Once again, I am pleased to welcome you to our newsletter, which Ravi has compiled for us, rather unusually this month, from the confines of the UK. Thank you, Ravi, and to all the contributors.

I am pleased to pass on our membership secretary's report, that our membership continues to grow. At the last count we had exactly 100 members, which is almost the same as pre-covid, and includes 27 who have joined in the last 18 months.

This newsletter contains a lot of interesting reports of events you might have attended. The monthly meeting and coffee morning continues to be very well attended, aided by Sarah's selection of speakers. Geoff Harris led us on an anecdotal romp through hidden and lesser known London which I, in particular, enjoyed. There is a long list of unusual things to do and see in London enclosed, which Geoff kindly provided.

The walks have all continued to thrive. The better weather has encouraged us to travel further afield with challenging (and also more gentle) walks into Derbyshire. The Longer walk is in danger of infringing on Photography Club territory with its own photo album this month! Likewise, Plants and Picnics is slowly morphing into a domestic Fine Dining, judging by the descriptions of the catering at the last event. Meanwhile other groups continue with regular meetings and outings. The Cascades trip by Local History visited the gardens described in the talk by the creator at our Monthly Meeting last autumn. Fine Dining, Book Club, Film Club and Canasta all continue to do well, and I live in hope for MahJong.

Rod Mitchell has written, unusually, about places nearer home this month, with interesting notes from Norfolk. Also, advice on visiting Skegness by train (or not).

The coming month gives us all opportunities to be involved with some or all of the groups, with new walks, talks and forks (bit of a stretch – sorry).

There is also the Park Garden trail on 11 June with u3a involvement, and our own Summer Party in early July to look forward to.

I am pleased to note that my hope of expanding the range of interest groups on offer is starting to come good. Jackie Fisher is getting a music appreciation group going, with a varied programme of events into the autumn. Adrian Hyde is looking for support to start a Science-based group (time for all those PhDs to come out of the woodwork) and also for an Italian Reading and Conversation group. I hope we can get these going too.

Anyway, that's enough from me previewing the newsletter – I will let you get on with reading it.

Graham Edwards – Chair

May Monthly Meeting – Sarah Waites

On **Tuesday 16th May**, Geoff Harris, one of the country's leading toastmasters, gave us a spirited talk in a lovely loud voice. Hidden amongst the many famous places, buildings and landmarks in this extraordinary city of London are lesser-known places to visit with quirky, often mad, back-stories, part of its long history. Here is a selection of the hotch-potch of stories he told:

The King still needs the permission of the Lord Mayor to enter the City, I think¹. New Scotland Yard, the home of the Metropolitan Police, was once the Scottish embassy back in the time of Edward the Confessor. The oldest London church, St. Bartholomew's, made a good living out of running prostitutes but hypocritically would not allow the girls who died to be buried in the graveyard. The invention of tomb stones and coffins put an end to the recycling of graveyard space, and in Kensal Green, on the Grand Union canal, people who feared being buried alive (apparently not so uncommon) could be buried with a pipe into the coffin and a string attached to a bell. This could be rung to alert people they were still alive! Nelson was buried by a penny-pinching government, in an unused coffin, previously intended for Cardinal Wolsey, who fell out with Henry VIII.

In Trafalgar Square, look out for the world's smallest prison with space for two people, used up until the 1960s. Marble Arch was moved and widened because it was too narrow for the queen's carriage. There was an unsubstantiated rumour that the arch contained a police station. A famous pianist's Bechstein was too big to be taken into the concert hall at the BBC and so their carpenter made a replica, complete with candelabra, to work out a solution. Unfortunately, they couldn't get the replica out of the workshop! One theatre in Covent Garden drove 50 real galloping horses onto the stage for a Derby scene. The Bristol suspension bridge was built from most of Hungerford swing bridge. London was the first place to have gaslights in 1807 (crude pipe-like affairs) one of which worked on sewer gas.

There are many strange rules and permissions still in existence, such as it being allowed to herd sheep over Westminster Bridge but being illegal to have sex on a parked motorcycle. This latter disappointed quite a few of the audience! When Earl's Court installed its first



escalator, it employed a one-legged man to show reluctant people that it was not dangerous. My favourite was his account of the Postman's Park (where Postmen went to eat their lunch) behind St. Bart's church. Here there are memorials and



plaques dedicated to a range of selfless heroes from the past and present, such as Leigh Pit who drowned saving a boy drowning in the canal. It is a lovely park that I intend to visit. I also plan to visit the inside of the Royal Naval College at Greenwich to see the largest painting in Europe.

In the back of the newsletter is a list of the places mentioned. Happy visiting.

¹ From a Google search: "...the monarch does not **need** permission to enter The City of London, but would be just wary of doing so without invitation from the Lord Mayor, because the City controlled loans, which is the other way the monarch could raise money. The world has moved on, but the traditional ceremonies haven't, and their meanings have gradually been eroded." – Ed.

u3a Talk Tuesday 20th June 2023

Peter Armitage Chief Executive of Stonebridge City Farm will talk to us about the activities of the organisation.

Established over forty years ago, in 1978, Stonebridge City Farm has developed and grown as a community charity based in St. Ann's. The farm is unique in Nottingham and now an important part of Nottingham's community and social care landscape. It works with people from different communities, the young and the old, the disadvantaged and more vulnerable, school children and students as well as those disadvantaged in the employment market.

There are three main strands of activities: A Visitor Centre, an Education Centre and a Volunteer Support and Training Centre. Peter Armitage will talk to us about the farm's status, activities, challenges and future. People may wish to make a donation.

The Monthly Meeting and talk will be at the **Castle Lawn Tennis Club** on Tennis Drive once again. We will meet at 10.30am for coffee, with the speaker at 11.00am.

Computer Help! – *from Graham Edwards*

Some members may feel that their computer skills are not sufficient to do all the things they want to on their laptops, tablets etc. Age UK is offering FREE local Digital Skill Training on a one-to-one basis. Full details are available on the website, under their Digital Inclusion Programme. Alternatively, you can contact them by phone (0115 841 4470) or email digitalinclusion@ageuknotts.org.uk.

For those of you who have a specific problem with your technology (computers, tablets, emails, WhatsApp, etc.), or know a member who does, we may be able to help internally. Please contact Graham Edwards at chair3.parknottinghamu3a@gmail.com in the first instance, and we will try to help.

Travel Notes: *by Rod Mitchell*

"Walmington-on-Sea"? It's not you know.

Aficionados of the Dad's Army TV serial will know that outdoor location scenes were filmed in and around Thetford, which is a fair few miles from the coast. One exception was an episode when our heroes paraded at the station to salute the King and Queen as they whizzed through the town in the Royal Train. This was filmed 50 years ago at Weybourne station on the North Norfolk Line (NNR) or "Poppy Line" as it is known. From this station, a short walk uphill will afford you a view of Weybourne village and the North Sea beyond, allowing a stronger claim to be "on-Sea".



To mark the anniversary of the filming, 29th and 30th April this year were designated “Dad’s Army Weekend” on the NNR; and Weybourne station was renamed “Walmington-on-Sea” for the occasion. Supporters of the Thetford Dad’s Army Museum (does any other TV comedy series have its own museum?) turned out to re-enact scenes from the episode or illustrate life in World War 2 Britain.

Clearly, they were multi-talented, as I spotted “Captain Mainwaring” on trumpet and mouth organ in the band playing ’40s tunes in the station car park. A selection of vintage vehicles, including Corporal Jones’ butcher’s van, were also on display.

I learnt that Weybourne station has been used as a location for other TV programmes including “Hi-di-Hi” and “Allo, Allo” (Walmington-sur-Mer!). For many preserved railways, facility fees from TV and film companies can be an extra source of income. Association with a popular film or TV series (The Harry Potter films spring to mind) can also be an important marketing tool. Operating steam railways is a very expensive business and preserved lines like the NNR rely heavily on volunteer labour to keep everything going.

The Poppy Line runs from Sheringham to Holt and is the only surviving fragment of a railway network that ran from Peterborough, connecting towns and villages in North Norfolk whose names are redolent of an Agatha Christie novel (Melton Constable anyone?). It had become uneconomic in the early 1950s, and in 1959 it was closed completely, long before Dr. Beeching wielded his axe. A preservation society sprang up, but it took decades to bring the line to its current status as one of the UK’s top preserved railways. Sheringham itself is well worth considering as a destination for a short staycation. I stayed at a lovely B & B (details on request) which served a scrumptious vegan breakfast.

No matter the mode of transport, Nottingham to Norfolk seems to take forever. I travelled on a shabby, overcrowded 2-car train to Norwich which took nearly 3 hours. In contrast, the local service to Cromer and Sheringham is operated by Swiss-built 4 car trains which were spotlessly clean. Though busy, this final part of my journey was a pleasure. If steam trains are not your thing, the CH1 Coastliner bus runs every hour from Sheringham to Wells-next-the-Sea, enabling visits to historical locations and nature reserves including the seal sanctuary at Blakeney Point.

Flight shame no more.

After I finish these notes, I’ll be packing for my first flight since 2019 (It’s from East Midlands to Riga if you want to know). Next year I’ll be flying to Lisbon and then back from Andalucia, at a fraction of the cost of going by land and sea. I’ll be using trains when I get there, although these will have to be combined with buses, because, apart from Vigo to Porto, there are no direct trains between Spain and Portugal. Preparation for my Ryanair flight (who else?) also includes a line-by-line examination of their baggage regulations. I understand the rules on liquids in hand luggage are to be relaxed next year, but the airport security process will always be an ordeal for me.

Trains to Skegness.

Fancy a trip to Skeggy this summer? I suggest not going at all (probably the best option in my view) or taking your car. In previous years, a summer Saturday service used to operate with an Intercity 125 train, but this has been axed. Instead of running extra trains in the summer, East Midlands Railway is now reducing capacity. Passengers will be required to book ahead up to 12 weeks in advance and, according to a report in Private Eye, will only be allowed one bag. Free vacuum bags will be handed out to those wishing to further downsize their luggage (Private Eye may have made that one up – best to check). If you buy a ticket on the day, you'll be put in a separate queue and likely be put on a bus. I think this is called "demand management" or "maximising shareholder value". I think most of us would call it something unprintable.

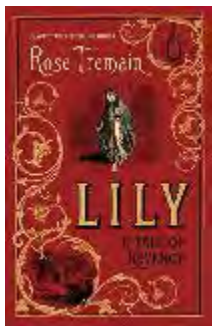
Toodle–pip!

Rod Mitchell

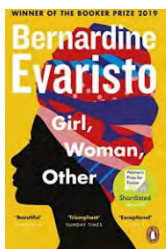
roderic.mitchell56@gmail.com.

NEWS FROM THE INTEREST GROUPS

Book Club – *Convenor, Liz Gilder*



The Book Club met on **Tuesday 23rd May 4:00PM** to discuss '**Lily**' by **Rose Tremain** – a tale of revenge. London, 1850. On a freezing winter's night, a baby is abandoned at the gates of a park only to be saved by a young policeman and taken to the Foundling Hospital. After suffering years of brutal hardship at the Hospital, Lily is released into the world of Victorian London. But she is hiding a dreadful secret. When Lily and the policeman meet again, Lily is convinced that he holds the key to her happiness. But might he also be the one to uncover her crime and so condemn her to death. The Book Club had a lively discussion and mostly enjoyed the book and was appalled at the treatment poor and abandoned children received in these foundling hospitals.



Our next read is '**Girl, Woman, Other**' by **Bernardine Evaristo**. This is Britain as you have never read it. This is Britain as it has never been told. From the top of the country to the bottom across more than a century of change and growth and struggle and life, 'Girl, Woman, Other' follows twelve very different characters on an entwined journey of discovery. It is future, it is past. It is fiction, it is history. It is a novel about who we are now.

Our next book club meeting will be **Friday 16th June at 4.00 p.m.** at a member's house.

To join the Book Club, contact e.gilder@peoplemarketing.co.uk.

Canasta Club – *Convenor, Jane Ellis*

Over the last couple of months our small group has been delighted to welcome two new players – Anne and Jane. Both have learnt the new rules of 'Hand and Foot' pretty quickly and have been able to play either solo or pairing with a partner. With these two new regulars we are usually meeting our maximum numbers of 8 players at any one time – so it is just as well we are meeting twice a month rather than monthly, because then everyone in the group can be guaranteed at least one game a month if they are available to play!

Our regular player numbers have grown quite steadily over the last year, which is very encouraging, and if we can just have a few more joining and playing regularly, we will be in a position to charge a small fee each session to meet the hire cost at the Castle Tennis Club.

In April we decided to amend our playing dates to the first and third Thursday of every month, so that means our forthcoming games will be held on:

June 1st and 15th

July 6th and 20th

August 3rd and 17th

with all games played between **3.00pm – 5.30pm**

Once again, if you are interested in joining the group or would like to come along for a taster session, please contact Jane Ellis ellisjane215@gmail.com.

English Language Group – *Convenor, Margaret Wiedemann*

The merry month of May started well with an impassioned discussion of how the placing of a comma can alter the whole meaning of a sentence (the old "Eats, shoots and leaves" issue), but after that the amount of WhatsApp activity dwindled to nothing. The weather has been glorious, and we've all been in our gardens or enjoying the countryside.



Did you know that the ubiquitous "fa la la" in Elizabethan part-songs and madrigals is thought to mean what we now indicate with the words "nudge, wink"? An example is Thomas Morley's madrigal "Now is the month of maying, when merry lads are playing, fa-la-la etc". In another well-known madrigal – presented to Queen Elizabeth herself – the expression becomes a verb: "the nymphs

are fa-la-la-ing". Oh my goodness.

We hope to be back with plenty of equally elevated observations in the next issue. If you would like to join us, please email mjwh57@gmail.com.

Film Group – *Convenor, Ian Henderson*



At the May meeting of the Film Group on **Friday 5th May**, eight of us discussed "**How to Blow Up a Pipeline**". This is billed as an eco-thriller, directed by Daniel Goldhaber, inspired by (but not following) the non-fiction book by Andreas Malm, a left wing academic. Goldhaber also wrote the screenplay.

The plot does exactly what it says on the tin – it follows a group of eco activists and others with various reason to attack the oil industry. The film traces how they got together as a group, how they went about arranging to attack the pipeline, and (spoiler alert!) how they mostly got away with it on their own terms.

The film has been very well received by critics, with phrases such as 'daring heist movie', 'furiously of the moment', 'ecological thriller with stellar young cast'. The US public on the other hand often thought it subversive.

Our group rather surprised themselves by enjoying the film although in some cases being quite critical of the implausibility of much of the plot. Some Film Group members were

sufficiently keen to be involved that they emailed scores from overseas. Our overall score was 6.4 out of 10 which was a little less generous than our discussion implied. Rotten Tomatoes public vote was 63%, compared to 94% for the critics, so we were in good company.



Our next film will be **"Full Time"**, a domestic thriller set in Paris, directed by Eric Gravel and starring Laure Calamy. We will be discussing this on **Friday 2nd June**. Full details will be provided to Group members via the WhatsApp group.

If you are not part of our WhatsApp group and want to join us let Ian Henderson know at ianhenderson73@gmail.com You are very welcome to come and see how we operate even if you haven't seen the film.

Fine Dining Group – *Convenor, Adrienne Lee*



May saw the group visit an old stager in Plumtree – **Perkins Bar and Bistro**. Opened in 1982 by Tony and Wendy Perkins, who converted the defunct railway station building, it remains a family business (now run by their sons Jon and David).

The name had often come up as a potential lunch venue, but varying word-of-mouth reviews kept it from being a firm booking. However, we eventually 'bit the bullet' in search of more affordable meals (this time it was £22 for two courses, £27 for three). Expectations were not universally high!



I was not at this meal, as I was on holiday, but the feedback from 14 diners was overwhelmingly positive. The quality of food and cooking was roundly praised, as was the service. A high average score of 9.5/10 resulted. Looks like I missed a winner!

Our next outing is to **The Woodlark Inn** at Lambley, on **Friday 16th June**.

If you want to join us, contact Adrienne at adriennesuperade@gmail.com

Report by Ian Henderson

Local History Group – Convenor, Stephen Hyde

On Friday 26th May more than a dozen members ventured to Bonsall to visit **Cascade Gardens**.

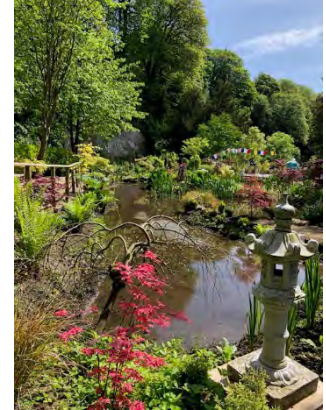


We had a wonderful day in this cleverly-designed Buddhist inspired garden, enhanced by some beautiful weather.

Some of you may have attended the talk at the monthly meeting in November last year given by Alan Clements which was much appreciated. Cascades Gardens has been designed by the owner over the last 26 years to reflect the natural balance and harmony that

can be found in Nature. Inspired by Japanese gardens and Buddhist philosophy, the combination of massive rocks streams waterfalls and natural planting is intended to celebrate nature and refresh the soul. For further information see

www.cascadesgardens.com



Our next outing is on **Friday 30th June** when we are visiting Doddington Hall. **Doddington Hall & Gardens** is situated in the beautiful Lincolnshire countryside. It is a family-owned and run Elizabethan Hall with shops, a café and gorgeous gardens.

If you are interested in the activities of this group, please reach out on stephen@hydemail.co.uk or 01159415598.

MahJong Group – Convenor Graham Edwards



Although we were not able to establish a quorum for the May meeting, there is still plenty of interest in MahJong, and we are forging ahead with new meetings.

The next MahJong event has been arranged for **Monday 5th June**, at the home of one of our members. There may even be some refreshments. Members on the MahJong mailing list will receive an email nearer the time, detailing the arrangements for the meeting.

If you are interested in joining us, and have not added your name to the list, please drop me a note at grahamedwards542@gmail.com.

Previous experience is not necessary.

Music Appreciation Group *Convenor, Jackie Fisher*

We are gradually forming some plans for how we might run this group and several people have expressed an interest in attending. To start the group off, Liz Gilder is planning to attend a recital at St. Peters Church (next to M & S) at 10.30 a.m. on **Saturday 24th June**. Admission is free but the church would appreciate a donation, and coffee is served. Then, on **Wednesday 28th June**, we will have a meeting at my house to listen to some of the music which is to be played at the concert at the Royal Concert Hall on **Friday 30th June**. I will give a short introduction to these pieces. It will be up to individuals to book tickets for the concert if they wish to go.

In the autumn we are planning to run sessions when members of the group can bring recordings of music they particularly like and explain a bit about the music and why they have chosen it. Jane Ellis is a jazz enthusiast, and she is proposing organising a trip to enjoy an evening at Peggy Skylight's in the Lace Market.

We will review how things are going after a few weeks and decide whether it is worthwhile continuing with the group.

Dates:

Saturday 24th June at 11am: Ed Hodgkinson is giving a piano recital at St Peter's church. Programme: Handel "The Harmonious Blacksmith", Haydn sonata in Eb major, Schubert Impromptu D899.

Wednesday 28th June: Meet at Jacky Fisher's house, 23 Lenton Ave, at 7.30pm.

Friday 30th June: Concert at the Theatre Royal Concert Hall. Programme: Rimsky-Korsakov Capriccio Espagnole, Rodrigo Concerto de Aranjuez, Boulanger D'un Matin du Printemps, Stravinsky Rite of Spring

If you are interested in joining the group, please email Jackie Fisher (gandjfisher23@gmail.com) or Liz Gilder (e.gilder@peoplemarketing.co.uk).

Photography Group – *Convenor, Rod Mitchell*



The Photography Group is seeking power, that is, "power" conveyed through an image. Literal or metaphorical representations of this theme will appear in next month's newsletter.

As previously reported, Ian and Graham from our group have been involved in the Artspeak Photography Group's contribution to Sherwood Art Week. This takes the form of a photography exhibition at the Robin Hood Inn on Mansfield Road from 17th to 24th June. Search for www.sherwoodartweek.org to find out more.

No matter your level of expertise, you'll find a warm welcome at the Photography Group. Most of the time we communicate via our WhatsApp group, with occasional outings to local places of interest to take photos relevant to our chosen theme. Let me know if you want to join and we'll add you to the WhatsApp group, and supply login details for our Flickr page.

Plants and Picnics – *Convenor, Marion Martin*

This month saw us return to Hema's, for a meeting previously postponed when Covid had other ideas for us.



As the weather was a bit 'marginal', we gathered in the kitchen to enjoy a lovely lunch provided by Hema – a savoury tart was perhaps the star of the show, followed by a rhubarb cake dessert, using rhubarb grown by Andrew.

As usual, the conversation ranged far and wide, with a healthy portion of plant discussion thrown in, including quite some discussion on the re-labelling of 'weeds' as 'hero plants' (yes, this is a 'thing' being promoted by the RHS, and featuring heavily at Chelsea). Andrew had found an article by Alys Fowler in the Guardian, advocating a more relaxed attitude towards our weeds, and embracing the natural cycles in the garden. Often, the plants that are best suited to your soil, and are telling you something about it, are not thought of as valuable plants. However, I think we agreed that taking that to its conclusion, and allowing a plant to go down 'in an orgy of aphids', was probably taking things a bit too far!



The 'garden tour' happened on the way out, and we got distracted by all manner of things, including identifying the emerging perennials and enjoying the late spring colour.

We have also had our usual swapping of 'what pest is this?' (sawfly on Solomons Seal anyone?) and what to do about them. Taking Alys to a new level, maybe re-define them as 'bird food'?

If you're interested in joining this group, please contact Marion Martin at PNu3aPandP@gmail.com.

Walking Groups

Short Walks – *Convenor, Andrew Martin*



Our Short Walk in May was a 3-mile circuit of **Colwick Country Park**. This was a very interesting walk with plenty to see, with Spring evident in the woodland and lakeside views. Lots of new goslings were bustling around, the offspring of the Canada and

Greylag geese. We were surprised to see the nearly-complete Fish Pass, an ambitious scheme to allow large fish and eels to swim upstream to spawning grounds further up the River Trent. This £19 million project is due for completion in 2023 and will include public viewing galleries. We hadn't expected to get a coffee break on our walk, but we were pleased to find a mobile café that had been set up to service the workers on the Fish Pass building site.



From Colwick Country Park, we had views across to Holme Pierrepont and the Water Sports Centre. It is a long time since the Short Walkers visited here, so, on **Tuesday 13th June**, we will attempt a 3.6-mile linear walk which will visit **Skylarks Nature Reserve and Holme Pierrepont Watersports Centre**. Travel will be by bus. The route is very flat, and surfaces are all good. Full details will be sent out to those on the Walks email list (see below) about a week in advance.

Following the planned June Coffee Morning talk about Stonebridge City Farm, we will repeat a favourite walk in July visiting **Green's Mill and Stonebridge City Farm**. This will be on **Tuesday 11th July**, so please save the date in your diary.

Long Walks – Convenor, Graham Edwards

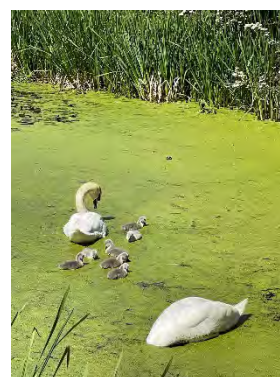
The Long Walk on **Tuesday 25th April** was one straying outside of Nottinghamshire, but still accessible using a Nottingham City Transport bus.

Eleven of us set off on the 77 bus to the outskirts of the City on a glorious morning. From the wilds of a Strelley housing estate, we made a swift exit across a recreation ground into the rather more pleasant environs of Strelley village. We were unable to resist the lure of the coffee shop at Strelley Hall although it was quite early in our walk, which delayed us a while.



However, we were soon into the walk proper, over the M1, through Oldmoor Woods (bluebells sadly now departed), and onto field paths and tracks leading us down to the Nottingham Canal. Although virtually non-existent in places, and overgrown elsewhere, the canal was a wonderful

sight with plenty of flora (May blossom, flags etc) and fauna (ducks, swans, fluffy cygnets.)



From the canal, the Bennerley Viaduct, fairly recently re-opened, crosses the Erewash Valley and floodplain. The viaduct also formed the centrepiece of two of Andrew Martin's walks recently. We crossed at a sedate pace, making full use of the views, reached the banks of the Erewash Canal and then walked southwards with purpose, aware that the train service home only has an hourly service.

The walk, unusually close to the advertised 6 miles, gave us all a gentle morning out without too much travelling involved.

The next Long Walk is scheduled for **Wednesday 21st June**. Liz Gilder will lead us on a circular walk in the Chatsworth area.

We will drive to the area, walk for about 6 miles, find time for refreshments, before returning to Nottingham by about 3.30 pm. The walk will include some hills, which are inevitable in this part of Derbyshire.

I will be sending full details to those on the Long Walks mailing list nearer the time.

If you are not on the list and would like to join, please let me know at:

grahamedwards542@gmail.com.

Longer Walks – Convenor, Andrew Martin

Well done to the hardy group of Longer Walkers who braved the challenging **Ashover** route on **28th April**. We all agreed that this was one of the toughest walks we'd attempted. The varied



terrain included wetlands, peat moorland and several paths that were rarely walked. To cap it all, as we crossed one dairy farm, we were confronted with a herd of about 200 cows on their way to the milking parlour. We managed to negotiate our way through with the help of the farmers, but the muddy path was obliterated by the

passage of the cows. Despite the difficulty, we thought the scenery, the landscape and the industrial heritage all made for an interesting and enjoyable walk in an area with which few of us were familiar.



On **Friday 26th May**, six Longer Walkers travelled to **Winster**, Derbyshire, on a warm and sunny day. Conditions were very different to those on the Ashover walk in April. Mud was replaced with cracked earth underfoot, and the hedges were full of hawthorn blossom. The shortened 9-mile route still included some stiff ascents, but the views were



magnificent in the clear Spring air. After our first big climb up to Birchover we crossed Stanton Moor and

visited the Nine Ladies stone circle, one of many Bronze Age relics in the landscape. Lunch was taken by the side of the river near Youlgreave where we saw hundreds of tadpoles in the water. We saw another stone circle below Robin Hood's Stride as we followed the Limestone Way back towards Winster, where we rewarded ourselves with a drink at the Miners Standard (lacking an apostrophe – ELG Grammar Guerillas please take action!). This was a very enjoyable challenge in good company. This was such an outstandingly beautiful walk that we decided to share an album of photos of the walk that you can view by [clicking the link here](#).



The June Longer Walk takes place on **Monday 26th June** and will follow a linear route from **Gotham to Costock**, via East Leake and Wymeswold. The length of the walk is 11.3 miles and travel will be by bus. This will be an opportunity to explore further the countryside on border between Nottinghamshire and Leicestershire. Full details will be sent out to those on the Walks email list (see below) about a week in advance.

If you would like to be added to the email contact list for Short or Longer Walks, please email u3aparkwalks@gmail.com

Proposed Science Reading and Discussion Group

Dr Adrian Hyde is suggesting that we set up a **Science Reading and Discussion Group** for Park Nottingham u3a. This would fill a gap in our range of interest groups which are a bit light on science.

Adrian is Emeritus Professor of Geotechnical Engineering at the University of Sheffield. He proposes coordinating the group but would welcome support from others to lead when he is away from the UK.

The group would be open to anyone interested in science and technology but particularly those with a science qualification.

It is proposed that participants would jointly choose a topic and read an accessible science paper or article which would be discussed at the following monthly session. Participants would be encouraged if they wished to carry out their own research by reading around the topic.

If you are interested in joining this group, please contact Adrian at a.f.l.hyde@sheffield.ac.uk

Proposed Italian Reading and Conversation Group

Dr Adrian Hyde is offering to set up an **Italian Reading and Conversation Group** for our u3a. Adrian holds joint British and Italian nationality and was a visiting professor at Università degli Studi di Trento.

The group would target those amongst us who have a basic ability in Italian who wish to improve their ability beyond buying a train ticket or ordering a meal.

Each session will be based on participants having read a short story or magazine article in Italian which will then be discussed in the group. Sessions would normally be monthly. The co-ordinator is not in the UK all the time, but perhaps another member fluent in Italian could take over where necessary.

If you are interested in joining this group, please contact Adrian at a.f.l.hyde@sheffield.ac.uk.

Learning Opportunities available to Members

If you look on the national U3A website, u3a.org.uk, you will be able to see many on-line talks, workshops and courses which come free with your membership. There is a wide range of talks on offer from well-known speakers and organisations, plus in-person events at venues like the Royal Institution. All on-line courses are hosted on Zoom.

[Take a look here](#) to see what is on offer.

Jean Henderson

The Park Garden Trail



Hopefully you will all have seen the fliers and other advertisements for the Park Garden Trail which will be held on June 11th (parkgardentrail.org).

The u3a will be represented by some of our members who will be opening their gardens, including that of our Treasurer, Liz Gilder, who will be displaying a u3a banner and offering leaflets to prospective new members.



Following the request for volunteers to help man the ticket sales marshalling etc, at the monthly meeting, the organisers would now like to recruit bakers to provide cakes etc. for the afternoon tea gardens. If you would like to help in this regard, please contact Beth Hall (bethhallewh@icloud.com) who will be happy to provide details.

Summer Party 2023

You will already have the 'save the date' in your diaries for the Summer Party on **Tuesday 4th July**, but here is a reminder anyway.

Angela Parmar has kindly lent us the use of her wonderful garden for the occasion, and Jo Martin and her team are putting together a great event for us. There will, as usual, be plenty of food and drink. Wine will be flowing, pulled pork and trimmings will be served (with a vegetarian option). There will be entertainment, and a raffle. Fun and jollity will ensue.

Full details will be sent to everyone soon.



THE LONDON NO-ONE TELLS YOU ABOUT!



I hope you enjoyed my talk about little known parts of London. Below is a list of some of the places I have mentioned and their nearest tube or DLR station, should you ever feel the need to visit any of them. Even with the tube guide, some of them will still need a little searching out, which is a part of their charm. Make the effort, it's worth it.

Great Scotland Yard	(Scottish Embassy)	Charing Cross/Embankment
Grosvenor Square	(US Embassy)	Bond Street/Marble Arch
St Bride's, Fleet Street	(Wedding Cake)	Blackfriars/St Paul's/Thameslink City
St Bartholomew the Great	(Weeping Statue)	Barbican
Kensal Green	(Cemetery)	Kensal Green
Highgate	(Cemetery)	Archway
Necropolis Railway	(Leake Street)	Waterloo
Postman's Park	(Memorials)	St Paul's
Poet's Corner	(Memorials)	Westminster Abbey
St Leonard's Shoreditch	(Memorial)	St Paul's
Greenwich	(Painted Hall)	Cutty Sark/DLR Island Garden/River Taxi
Trafalgar Square	(Lock up)	Charing Cross
Marble Arch	(Police Station)	Marble Arch
Theatre Royal Haymarket	(Break A Leg)	Charing Cross
Tower Bridge	(Tour)	Tower Hill
Albert Bridge	(Bridge)	South Kensington
The Mall	(Gas lights)	Charing Cross
Whitehall	(Kerbstones)	Charing Cross
Burlington Arcade	(Beadles)	Green Park/Piccadilly Circus

Park Nottingham u3a Calendar for June 2023

One way to contact group leaders is to visit our u3a website (link at the top of this newsletter) and clicking on the bluebird at the top of the relevant group page. You can then type a message that will go straight to the inbox of the convenor.

Date and Time	Event	"Venue"	Contact
Thursday 1 st and 15 th June	Canasta Club	Member's home	Jane Ellis
Friday 2 nd June	Film Club	'Full Time'	Ian Henderson
Monday 5 th June	MahJong Group	Member's Home	Graham Edwards
Monday 12 th June	Committee Meeting	Nottingham Castle Lawn Tennis Club	Graham Edwards
Tuesday 13 th June	Short Walk	Skylarks Nature Reserve	Andrew Martin
Friday 16 th June	Fine Dining	The Woodlark Inn	Adrienne Lee
Friday 16 th June	Book Club	Member's home	Liz Gilder
Tuesday 20 th June	Monthly Coffee Morning and Talk	Nottingham Castle Lawn Tennis Club	Sarah Waites
Wednesday 21 st June	Long Walk	Chatsworth Area	Graham Edwards
Saturday 24 th June	Newsletter Deadline	parku3anewsletter@gmail.com	Ravi Sankaran
Monday 26 th June	Longer Walk	Gotham to Costock	Andrew Martin
Wednesday 28 th June	Music Appreciation	Member's Home	Jackie Fisher
Friday 30 th June	Local History	Doddington Hall	Stephen Hyde
TBA	Plants and Picnics	Member's Garden	Marion Martin

In addition to these meetings, the following groups are also "meeting" on-line:

Group	Activity	Contact
English Language Group	Discussion using WhatsApp	Margaret Wiedemann
Film Club	Discussion using WhatsApp	Ian Henderson
Photography Group	Discussion using WhatsApp	Rod Mitchell
Plants and Picnics	Discussion using WhatsApp plus visits and picnics	Marion Martin

USEFUL EMAIL ADDRESSES

Graham Edwards, Chair:

chair3.parknottinghamu3a@gmail.com

Ian Henderson, Deputy Chair:

ianhenderson73@gmail.com

Ian Henderson, Membership Secretary:

membersecparku3a@gmail.com

Jean Henderson, Business Secretary:

bizsecjean@gmail.com

Ravi Sankaran, Newsletter Editor:

parku3anewsletter@gmail.com

Editor's note: If you are reading the newsletter on your computer, tablet or phone, you will find that all email addresses in blue *italics* are live and can be clicked to send a message. For example, the email addresses above are live, but the one in the box below is not. Similarly, where a link to an internet web page is offered, the blue italics indicate that this is a live link and will take you straight to the page.

Contributions for the **July Newsletter** should be sent to the editor,
Ravi Sankaran, by **Saturday 24th June**, preferably by email to:

parku3anewsletter@gmail.com