



Hello and welcome to the April newsletter. Hope you have all had a good Easter. What does April bring? The saying goes “April showers brings May flowers” but in truth we have had a great deal of March rain so I for one would enjoy a slightly drier April. This month has April Fools Day on the 1st, Earth Day on the 22nd and St George’s Day on the 23rd.

NEWS FROM YOUR COMMITTEE

Volunteer Needed—Carmel D

At the A.G.M in July I will be standing down from the Committee and the role of **Lead Group Coordinator**. This is a crucial role, promoting the ethos and philosophy of u3a and assisting members who wish to set up new Interest Groups whilst providing Facilitator support to existing Groups. There is also a Deputy Interest Group Coordinator who works with me (Sue Watson), and she will be continuing in that role. Liaising with Facilitators and Members has been very rewarding for me as I am sure it will be for the next Coordinator.

The Job Role can be provided on request and will shortly be available on our website. If you are interested in helping your u3a by considering taking on this role, please have a chat with me, or our Chair **Jo Robinson**. Thank you.

Next Core Meeting - Val R

Next Core Meeting -Tuesday 9th April 2024 1.30pm for 1.45pm start. **We are now up to capacity for this meeting**, if you wish to be put on the reserve list, please email valrapson06@gmail.com by the end of Sunday 7th April. If you are booked to attend please remember to bring a mug if you want to have a drink.

Speaker Secretary - Beverley P



We had a very interesting speaker at the March core meeting. Helen Lloyd gave a talk on her extensive knowledge of Oral History. We heard people talking about their experiences during the 1900's. These ranged from Bugs in the Back to Backs, a child selling wooden railway blocks to people making a profit of 7/6, a postman from 1960 and telephone operator in 1920. I think everyone agreed Helen was a wonderful presenter.

April—we will have a local Bee Keeper Alan Deeley who may bring along some honey.

May—We will learn about the Servants of Baddesley Clinton from Jill Kashi.

June—Nick Martin is returning to talk about British Mammals. You may remember he came last year and talked about his love of British Birds.

Recycling Opportunity - Roy W (Treasurer)



We will have a collection box for used cartridges at the next core meeting. Any money raised from recycling cartridges will be used to support Olton and District u3a. We have, so far, raised nearly £80 by recycling used ink cartridges.

ICE Cards - Geoff T

Are you prepared for ICE?

u3a quite rightly, promotes a message of Learn, laugh, Live.

However, **IF** you are suddenly taken very ill and are unable to communicate clearly with people around you, could the emergency services easily access vital information? Would it be possible for someone to inform a family member or other friend quickly? This is where an ICE card may help.

An In Case of Emergency card has been trialled with members of our Walking Group and has received a positive uptake. You can record information about yourself, medications, and allergies plus who should be contacted if you are taken ill. The card can be sealed in an envelope and kept on your person, or in a bag, that could easily be found by a responder if needed in an emergency.

| | |
|-----------------------------------|-----------------------------|
| | In Case of Emergency |
| Name: | |
| D.O.B. | |
| Medical Conditions and Allergies: | |
| Medication: | |
| Address: | |
| Emergency Contact Name: | |
| Relationship: | |
| Contact number: | |

is

You may already have something similar, or have filled in emergency information on a mobile phone. I am wary about including too much information on my mobile phone, in case I lose it or have it stolen by someone who could access my information without unlocking my phone.

There will be ICE cards and envelopes available at our next Core meeting and you are welcome to take one should you wish to enter some information and be prepared to carry one with you when at u3a meetings or out and about elsewhere.

NEWS FROM OUR INTEREST GROUPS

Creative Writing - Gordon C



Our March meeting was productive and enjoyable. We discussed our writing on the subject of 'The Journey'. These included a war-time evacuee's train journey, a journey to Cornwall for two people to meet after 30 years apart, and a couple of pieces dealt with mothers meeting their child after having had to give them up at birth.

The standard is improving and we look forward to our next meeting on Wednesday 24th April at 14:00 in the Core Cafe at The Library in Solihull when we will discuss our writings on our choice of one of the seven deadly sins.

Should you be interested in joining us, just to see if it's for you then contact Gordon Cresswell on 07815 887005.

Trips Group - Pat C



During March a group of members enjoyed a very interesting day out to St Fagan's Museum in Cardiff where they explored the stories of the people of Wales and how they have lived, worked and spent their leisure time.



The museum has moved over 50 historic buildings from all over Wales which include cottages, mills and churches. There is also a working farm and there were some newly born lambs in the fields. In the stores and shops there was a variety of Welsh produce to buy as well as fresh loaves and cakes from the bakery. The museum stands in the grounds of a castle with beautiful gardens adorned with attractive spring flowers and many of the group took the opportunity to visit.

Swimming Group - Susanne R.

The Swimming Group will be meeting up for a swim on Wednesday 1st May 2024 meeting at Fox Hollies Leisure Centre at 10.00 am. I look forward to seeing you there. "



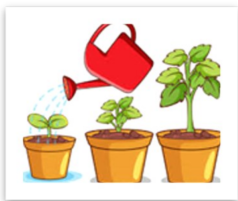
Craft and Chat - Jan B



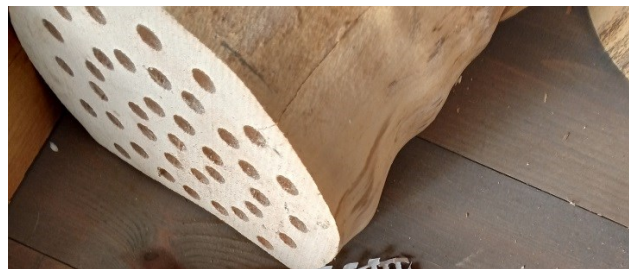
Happy Easter from everyone at Craft and Chat. Here are some pictures of our Easter makes.
What is a forgetful Bunny called?.....Hare-brained!



Garden Lovers - Rob C



At our last meeting on Friday 8th March to Castle Bromwich Hall gardens followed by a visit to the local Toby Carvery there were 14 hardy souls. The weather was dry but bitterly cold. We all started with a warming drink and then we explored the garden. However although we planned to stay for about 2 hours at the gardens we all felt that the warmth of the carvery was calling after about 90 minutes. Thanks to all those who braved the cold, at least the weather made us appreciate the hot food even more. Whilst at the gardens Rob bought a bee hotel which is included in the rather squashed up photo. This month's question is "which type of bees like this type of hotel and where should it be positioned." Answer to this is at the end of the newsletter.



On 12th April we will visit Lichfield including a guided tour of Erasmus Darwin house booked for 11.00am. There are currently 17 booked to go but if there are further members interested please let me know.

In May we will visit one of our local favourite gardens, the Botanical Gardens in Edgbaston. Due to an existing commitment I am unable to go on 10th May so I would like to move the meeting to Friday 3rd May. As well as the beautiful gardens themselves there are also the glasshouses with tropical and sub-tropical plants and also the National Bonsai Collection maintained by the local Japan society. The gardens should be coming into some lovely spring blooms. I shall be aiming to arrive at about 12.30 and have a light lunch before exploring the glasshouses and grounds.

Quiz Group - Hilary B and Carol O



This month's quiz is about fictional detectives. Here are the names of 12 fictional detectives whose names are the titles of British and US TV crime dramas. Alternate letters have been left out, e.g. S_E_L_C_ = Sherlock. How many can you find?

- | | | |
|-----------|--------------|-------------|
| 1) L_W_S | 5) C_L_M_O | 9) C_N_O_ |
| 2) K_J_K | 6) E_D_A_O_R | 10) L_T_E_ |
| 3) P_I_O_ | 7) M_I_R_T | 11) S_R_K_ |
| 4) V_R_ | 8) T_G_A_T | 12) M_C_O_D |

Here are the answers to March's 'Strictly' quiz.

- | | |
|------------|--------------------|
| 1) Samba | 6) Quickstep |
| 2) Jive | 7) Charleston |
| 3) Rumba | 8) Argentine Tango |
| 4) Waltz | 9) American Smooth |
| 5) Foxtrot | 10) Free Dance |

The Quiz Group meets on the second Thursday of each month at 1.30pm at Olton Friary. Our next meeting is on Thursday, April 11th. Carol and Hilary would be pleased to see you if you would like to join us.

SCRABBLE AND RUMMIKUB - CHRIS F.

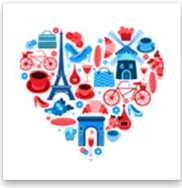


Hope you all had a Happy Easter and the weather didn't prove too problematic and you managed to enjoy some of the sunshine, even if a little chilly.

There wasn't a meeting this month as I cannot gain entry to Josiah Mason as the office is closed on a bank holiday. Unfortunately the same will happen next month on May Day.

Our next meeting will be Monday Jun 3rd.

French Language and Culture - Pamela D



During March, we followed the words to a French folk song called 'Au Clair de la Lune'. This was a completely new song to me, but one of the Group remembered learning it while at seniors school, and another member of the group recognized the tune as that used by the Springfielders in their recording of 'Say I won't be there'.

We noticed that the song used the past historic (*passé simple*) on a couple of occasions, so we revised the past historic tense. The past historic tense is mainly found in literature or songs, but is not a tense that is used in everyday conversation.

We also looked at the traditions followed in France for Mothers Day. Mothers Day, this year, took place, in England, on Sunday 10th March. In France, it is always celebrated on the last Sunday in May, unless this is the same day as a Christian Holiday, which happens from time to time, then it's the first Sunday in June.

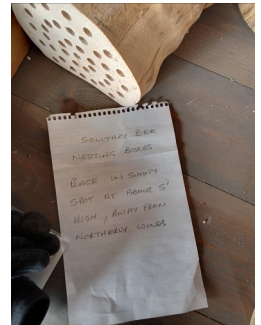
The session finished with a look at some French idioms. For example: 'avoir un chat dans la gorge', which means to have a cat in the throat – the equivalent of our 'to have a frog in the throat'

Anyone interested in joining the Group should telephone Pamela Davis on 0121.745.5707 or email her at pamelajoandavis@yahoo.co.uk. The group is for beginners or those that have a basic knowledge of the French language.

Answer ?

Answer to the garden lovers question .

It is a solitary bee nesting box which is best placed in a sunny spot at about 1.5 metres high facing away winds.



If you have any articles, you would like included for the May Newsletter, please send them to me at oltonu3aeleanor@gmail.com