



Olton and District u3a

February 2024

Newsletter No 86



Hello and welcome to the February newsletter. I really like this month as the days are visibly getting longer and there are signs that spring is not far away with bulbs poking their leaves through the soil and lovely buds or blooms appearing on trees and shrubs. February has lots to offer with a day for romantics and also one for pancake makers. Pancake day offers some preference for the sweet variety and the many savoury treats.

NEWS FROM YOUR COMMITTEE

The Next Core Meeting—Val R

Next Core Meeting - Tuesday 13th February 2024 1.30pm for 1.45pm start

“Please remember to book your place to attend this meeting by emailing Val Rapson valrapson06@gmail.com by **Monday 12th February at the latest**. Thank you.

Please also remember to **bring your own cup** if you wish to have a drink.”

MEMBERSHIP RENEWAL PROCESS FOR 2024/25

“Firstly, we would like to thank all members for their continued support of Olton & District u3a.

The renewal process for the subscription year 1st April to 31st March **will begin from 1st March**

Members can renew by completing a renewal form and paying by bank transfer or cheque. As we are limited on numbers attending the Friary for Core Meetings, we will not be able to process renewal forms at the meetings, but those booked to attend will be able to place their completed form together with their cheque (or a note of Bank Transfer) in the tray on the **Renewals desk**.

I will have to request all other members to send in their completed renewal forms to me, together with cheque or a note of bank transfer, either by printing off the renewal form and posting it to me at: **8 Burlish Avenue, Solihull B92 8BF**, or by completing the form and sending it electronically.

Could you please let me know on valrapson@gmail.com or **0121 707 4870/07906 817573** if you do not have a printer and need a copy of the renewal form so that I can organise it.

Forms and full instructions will be sent out via email as attachments to the **March Newsletter** and **by post for those not on email**.

If anyone has any membership queries, please do not hesitate to get in touch.”

Recycling Opportunity from Roy W (Treasurer)



"We will have a collection box for used cartridges at the next core meeting. Any money raised from recycling cartridges will be used to support Olton and District u3a."

News from Speaker Secretary - Beverley P.

"In January we had an interesting talk from David Carrington-Porter on how he negotiates life as a Blind Man. He explained about Braille being a combination of 6 dots and that Oliver Twist is 12 volumes in length. We learnt that money has dots on the £50 £20 & £10 notes for identification and there are now talking Air Fryers.

Our Feb speaker is Pam Woods who is going to tell us all about the Cats Protection League.

In March Helen Lloyd is giving us a talk about the Extraordinary Lives of Ordinary People.

Then we will learn all about honey in April from Alan Deeley who is a local beekeeper."

NEWS FROM OUR INTEREST GROUPS

Holiday Group - Joy E.

****Holiday to Lytham St Annes September 23rd - 27th 2024****

Members who wish to take the above holiday are requested to pay a deposit of £40 per person at the Core Meeting on 13th February 2024. Alternatively, this can be paid via BACS in the usual way.

Scrabble and Rummikub - Chris F.

"The group met on Monday 4th Feb with 9 attendees, that made three tables of which two playing Rummikub and one scrabble. We had one new member, so welcome Viv, and an enjoyable two hours were spent playing.

Meetings are held on the first Monday of the month at the Josiah Mason Hillborough Road, Olton B27 9PF. From 10 am - 12 noon."

Garden Lovers Group - Rob C

“Although the garden lovers group did not meet in January we have been busy completing our plans for 2024. There will be some local visits and some further afield including three coach trips. Our first meeting will be on Friday 9th February when we will go on a self-drive visit to the Valley Countryside centre near Evesham. The Valley has a large garden centre, two or three craft shops and several coffee and meal outlets so as well as garden lovers group members it may appeal to members not currently in the garden lovers group. As an optional extra for those interested there will be a visit to the Almonry museum in Evesham. I have circulated full details on Beacon to members of the garden lovers group. Please let me know if you would like to join this group.

Our following meeting on 8th March will be to Castle Bromwich Hall gardens followed by a visit to the local Toby Carvery for those interested.

Last month I posed a little conundrum about a record playing at Hanbury Hall. Well this month Gill and I visited one of our favourite gardens at Hidcote Manor. Some areas of the gardens were not quite at their best as you will see from the photograph but what do you think all the “thingies” are which are standing up. Well the answer is again at the end of the newsletter.”



Creative Writing— Gordon C.

“Our January meeting was most enjoyable as we hadn’t met since November. It was nice to welcome a new member who is already making splendid contributions. We discussed our individual offerings which were based on the individual’s personal choice.

Our next meeting is on 21st February 2024 at 2:00pm in The Core Café at Solihull Library. Our writings will be on ‘The Class’ which provides a wide palate of ideas.

New members will be welcome. Contact Gordon Cresswell on 07815 887005.”

Poetry Group – Glenys T. Open Meeting Monday 12th February

“The group are having an open session on **Monday 12th February at Hobbs Moat Library, Ulleries Road B92 8EB – 10-12am - YOU ARE INVITED**

The poet Suzannah Evans coming to talk to us about herself and some of her poems, read some of her poems and answer any questions. It is free and there will be some refreshments.

Suzannah Evans is a poet, creative writing tutor based in Sheffield whose poetry has been widely published. Her second collection Space Baby was published in 2022. In this book of poems she skilfully mixes absurdity and wit with speculative and serious themes.”

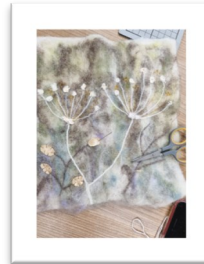
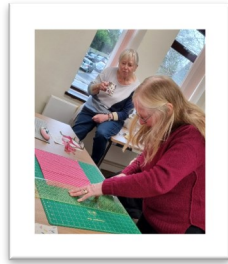
Craft and Chat - Jan B

“New Year – New Hobby?

Viv J showed us her needle felting, and will be giving us a demonstration later in the year on how to do this beautiful craft.

Some of our crafters are having a go at learning how to quilt. Jan B will be giving a small demonstration each month as an introduction to the art of quilting. This month was the group was shown how to precisely cut the material.

Please come along if you feel like trying something new. Our next meeting is on the 22nd February at Olton Library.”



Local History - Patricia K.

“The group visited the Old Joint Stock in Central Birmingham on 12h January 2024.

This is a very beautiful and historic Victorian building and is absolutely stunning both inside, with its lovely glass domed roof and outside with its distinctive pillars. Built in 1862, the architect who designed it was Julius Arthur Chatwin (1830-1907), and it was originally intended to be a library for St Philips Cathedral opposite. His designs always included all the outside decoration and the inside fittings. However, on completion it was soon bought by The Birmingham Stock Bank (hence the name) and then in 1889 it was bought by Lloyds Bank. It functioned as a bank until 1997 when it was bought by a brewery and has operated as pub restaurant until the present day . A top floor Theatre was added in 2006 .



Lynne, Carol and I would like to thank the local history group for coming to our post Christmas lunch at the Old Joint Stock and making our second outing such a success. I am sure you were all impressed with the beautiful historic building and it was especially nice that it was a new discovery for many of you.

Hope you all enjoyed the meal as much as we did. I thought it was a relaxing and convivial few hours spent together.”

Quiz Group - Hilary B. and Carol O.

“St Valentine’s day is just around the corner. From the word ‘VALENTINE’ can you find 10 proper nouns (all starting with a capital letter) from the clues below. For each answer you can use each letter once only, but as the letters E and N appear twice, then you can use E and/or N twice in your answer. The number of letters in the answer is given to help you, e.g. Bible’s first lady (3) = EVE”

- | | |
|---------------------------------|----------------------------|
| 1) African river (4) | 6) Bronte sister (4) |
| 2) ‘Crocodile shoes’ singer (4) | 7) Beatles Hit ‘Penny’ (4) |
| 3) 40 days of fasting (4) | 8) Tim and Jeremy (4) |
| 4) Sigourney’s movie (5) | 9) Russian leader (5) |
| 5) Singer Miss Zavaroni (4) | 10) European Capital (6) |

Here are the answers to January’s quiz

- | | |
|---------------------|---------------------|
| 1) May | 6) Paris |
| 2) Liverpool | 7) May Day |
| 3) Suella Braverman | 8) Ramsey Macdonald |
| 4) South Africa | 9) ‘Jackie’ |
| 5) Sam Thompson | 10) November 30th |

The Quiz Group meets on the second Thursday of each month at 1.30pm at Olton Friary. Our next meeting is on Thursday, March 14th. Carol and Hilary would be pleased to see you if you would like to join us.

Family History Group - Keith Y.

“I will not be able to attend the February and April meetings of the group.

On 16th February I am having a full, left-knee replacement and I am on holiday from 19th April for 10 days.

Apologies for this but members will be able to use the Library IT lab as normal. The room is booked. Please ask fellow members if there are queries and consult Library staff on computer connection issues.

I hope to be back for the March meeting of the group.”

French Language and Culture - Pamela D.

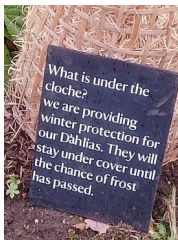
“At the January sessions, we had a look at the lives of two French singers: Charles Aznavour and Serge Gainsbourg. We listened to Serge Gainsbourg singing ‘Bonnie and Clyde’ and Charles Aznavour singing ‘La Boheme’. We continued our journey around France and read up about Le Pays de la Loire and also revised conjugating regular ‘er’, ‘ir’ and ‘re’ verbs.



The sessions are aimed at beginners and those who have some previous knowledge of the language. We meet at the facilitator’s home in Shirley, on the second and fourth Friday of the month, between 10.30 am and 12 noon. Anyone interested in joining should ring 0121.745.5707 or email pamelajoandavis@yahoo.co.uk “



Did you guess what the “thingies” were from the Garden Lovers Group ?



If you have any articles, you would like included for the March Newsletter, please send them to me at oltonu3aeleanor@gmail.com