

REMEMBRANCE SUNDAY 12th November 2023



Chairman Diane laying the u3a wreath

At the going down of the sun and in the morning we will remember them

Chairman's Chit Chat....

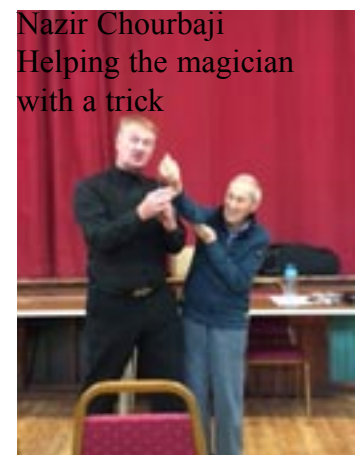
"What a fantastic speaker we had at our October meeting. It was "Magic". He was very entertaining and with audience participation. I hope we will be able to book him again in the future. It was a shame we had such a small attendance.

As I mentioned at the last meeting, we will be looking for nominations to the committee for our AGM in February as a number of the original committee members are due to retire. So again, please consider joining us in the New Year. We would welcome new ideas so if you would like to sit in on a committee meeting to see what we get up to before deciding, you will be most welcome. Just come and see me or any other committee member.

This being our last Newsletter for 2023 may I remind you that our Christmas lunch will be on 14th December and tickets are on sale now. The cost is £15 which includes a Hot Pot with Apple Pie and custard to follow. We also have a veggie option so please inform Pat Walker when buying your tickets. Entrance is by ticket only as numbers are limited, and sold on a first come first basis. There will be the usual quiz, raffle and a choir to entertain us.

For those members who are unable to come to the lunch, I take this opportunity of wishing you all a very merry, prosperous and healthy holiday. Of course this applies to all our members and to thank you all for the support you have given us this past year.

Merry Christmas and a Happy New Year. Diane Holker



Nazir Chourbaji
Helping the magician
with a trick



Best wishes for Christmas



Notices & other News Items

Speakers for 2023/24

16th November 2023	Megan Barley	My Quilting Journey
14th December 2023	Christmas Lunch	
18th January 2024	Kevin & Joy Siddall	A Musical Meander through Britain
15th February 2024	Simon Michael	Talk about his crime writing and work as a barrister
22nd March 2024	Marilyn Gregory	A Talk on Leprosy, a history of the disease and how it still affects people



Membership Subscription £12 for 2024. An update on our finances

The committee has resolved to increase the membership subscription from £10 to £12 for 2024. Our income comes from membership and entrance fees and for last year Riviera Travel commission. In 2022 the money coming in balanced with the money going out thanks to a £700 commission payment from Riviera Travel. Our membership is down by 40, and to date we have not received any commission from Riviera and we have had to purchase, a much-needed software update used to publish our newsletter costing £600.

So, in September we increased the entrance fee, to its true cost of £2, which will help to keep our end of year deficit under £1000.

For next year, the full year effect of the increased entrance fee will move us towards a balanced budget. Each year, for each member we pay a fee of £5 to the u3a Trust, for services they provide to us and to all u3a groups. They have confirmed they will peg this fee for next year by digging into their significant reserves and reducing their project activity, which is good news!

The £500 generated from the increase in membership subscriptions will be used to cover increases in running costs during the year and hopefully to replace some of our current year deficit. However, the hall sound system continues to give problems and we think it is probable that we will need to find some money for that in the coming year.

Mike Dewhurst, Treasurer

Membership Renewals for 2024

We will be open for membership renewal from the general meeting on Thursday 16th November. The subscription for 2024 is £ 12 per person.

There are two ways to renew your membership: (You don't need to fill in a renewal form)

1. In person at the membership desk at any general meeting
2. By post to – MB&M u3a Membership Secretary, 24 Beechwood Drive, Marple, SK6 7DG (enclose a stamped addressed envelope if you wish your new cards to be posted back to you).

You can pay by cash, or cheque made out to MB&M u3a. Please put your name and membership number on the back of the cheque, this can be found on the bottom of this year's membership card.

IMPORTANT: If any of your personal details, such as address, telephone number, email address etc, have changed please let us know at the same time as renewal. Failure to report any changes may result in you not getting important communication from us.

If you wish to receive the newsletter by post please enclose 6 stamped addressed envelopes (size 230mm x 160mm – size A5) when you renew your membership.

Strolling Group

Our "Strolling Group" is for members who would like a gentle stroll. We arrange strolls of about 2 miles followed by a cuppa. These take place on the first Tuesday morning in the month commencing at 10.30am, unless otherwise stated.

If you would like to be put on our contact list pass your details to Geoff Fogg joanfogg@btinternet.com or Shirley Hammond david.hammond60@btinternet.com

Don't forget your bus pass in case we need to ride back! Bring a drink over the summer months! Please wear appropriate footwear in case it is wet underfoot.

We have quite a large group of members who join us for a variety of strolls exploring different parts of our area and the surrounding countryside. We benefit from outside exercise as well as joining in enjoyable social occasions. We do need some of you to help to plan future strolls.

Tuesday December 5th Gail Dixon
Meet outside the Regent Cinema in the centre of Marple.

To leave at 10.30am

We will stroll down the canal. More details later.

Enjoy some refreshments in one of the cafes in Marple.

There will be no stroll in January.

Tuesday February 6th Shirley Hammond
Meet in Dobbies Car Park. To leave at 10.30am.

Take a short stroll along the Alan Newton Way. This is paved so should be ok underfoot but please be aware of the weather at this time of year.

We can then warm up with a chat and cuppa in Dobbies café.

Tuesday March 5th Shirley Hammond
Meet outside the Italian, La Dolce Vita, in Marple centre. To leave at 10.30am.

Stroll to the canal and follow the path up the locks. Take the fork along the Macclesfield Canal to Hibbert Lane. Walk up the road to Hawk Green Road. Follow the road and then the track down to the Peak Forest Canal. Stroll back along the canal to Marple.

Enjoy some refreshments in one of the cafes in Marple.

Please offer to arrange a stroll any time in 2024. Just book in for one of the months and we can help you arrange a stroll later in the year. I would be good if some of you would put your names down for a month, irrespective of whether you have an idea for a stroll yet. Put your thinking caps on.

Shirley Hammond

Dining Group

Thursday 30th November 7.00 for 7.30pm Hazel Grove Golf Club

Three Course Evening Meal £25
Buxton Road Stockport SK7 6 LU

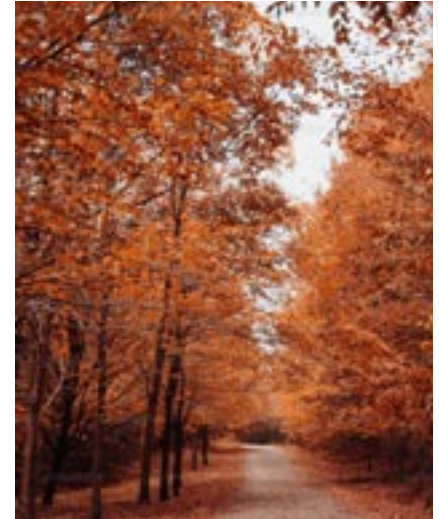
Wednesday 7th February 7.00 for 7.30pm Spring Gardens Marple Bridge

Two Course Evening Meal £23
89 Compstall Road SK6 5HE

Bookings will be taken at the November Meeting

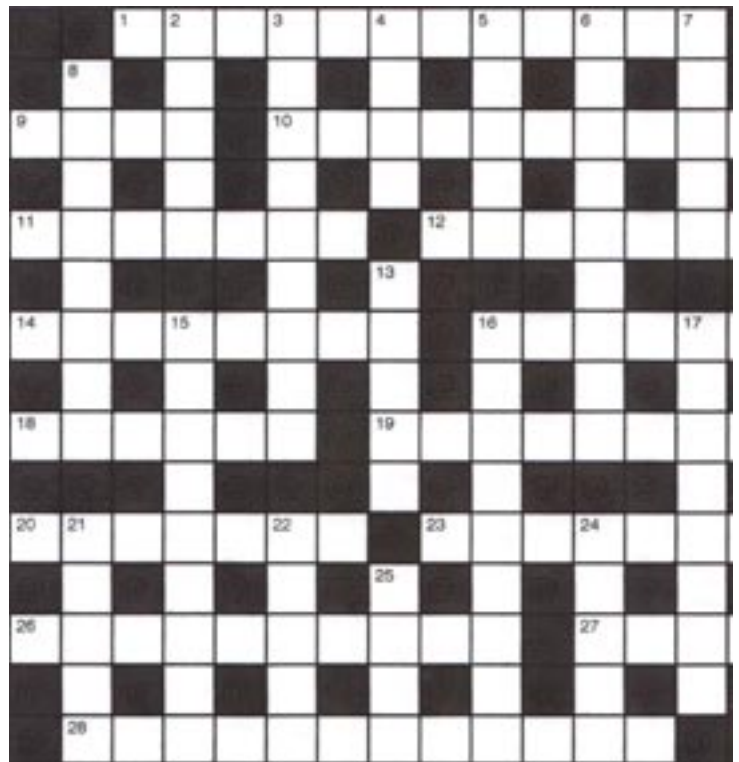
We have opened a bank account for the Dining Group - MB&M DINING we would like to start collecting the full amount at the time of booking.

This will make it more manageable for myself and Shirley rather than spending the first 45 minutes to an hour collecting and counting the money on the night



Crossword Compiled by Marple Bridge and Mellor U3A Crossword Group

compiled jointly by U3A Crossword Group



Clues across

1. Lunch treat having cereal at first, is hot and looks a bit pale. (7)
9. Commanding Officer of French cipher. (4)
10. Walker earned tips whilst working. (10)
11. Carrying on business. (7)
12. Reminder about hospital department is kept as souvenir. (7)
14. Test case resolved by record holder. (8)
16. Remarkable sight! Viewer is replete I hear. (6)
18. Cook steaks to go with fish. (6)
19. Fold bag in order to pack. (8)
20. Take one step and reach both sides. (7)
23. Maybe a meet up will lose a member. (7)
26. Performance in a squeeze box. (10)
27. Creep in church. (4)
28. Cleansed site for building food shop. (12)

Clues Down

2. Rope gets twisted in musical play. (5)
3. Kidney disease? Spin their treatment out. (9)
4. Team seen looking up in the distance. (4)
5. Glue used for artificial gems. (5)
6. Witch will score badly wearing topless gown. (9)
7. Fermenting agent as yet to be concocted. (5)
8. It's OK for car to be modified to carry bikes or kayaks for example. (4-4)
13. Measure in some trepidation. (5)

15. Sadly, it's racial parodying. (9)
16. Scan poems in order to go round. (9)
17. Release relative early near church. (8)
21. Heard breeder was at attention. (5)
22. Commence design of roof in cathedral using classical architecture. (5)
24. Untie tangled union. (5)
25. End it all, to start today, fast. (4)

Outings Group

Hope everyone is well and enjoying whatever you are doing.
Here is the plan for the first half of 2024.

January 6th Saturday ... Royal exchange "Brief encounter " This is fully booked.

February 29th Thursday ... Gorton Monastery and Belle Vue Zoological Garden.
Cost £27.75 which includes guided tours and sandwich lunch and cake with tea and coffee at the Monastery. Limited availability. Organiser.... Jenny Summers tel 427 3861

March 18th Monday Classic tour of Spain by Riviera flying to Malaga from Manchester.
Six nights. Limited availability..ie only two places left.
Organiser... Hazel Bhatt. Tel: 07808809795

April 16th Tuesday... World of Glass Museum tour, St Helens.
Cost £33.00pp which includes coach hire, driver's gratuities tea and coffee on arrival, guided tour of the museum, galleries, glass blowing demonstrations and lunch.

May 2nd Thursday... Sizergh Castle (National Trust).
Cost £20.00pp for National Trust members, £33.00pp for non members.,this includes coach hire, driver's gratuities and entry fee.

June 14th Friday..... Harewood House, Leeds.
Cost £31.00pp which includes coach hire, driver's gratuities and entry fee.

Bookings for the above will be taken from the November meeting

Hazel Bhatt



DAVID HAMMOND



David was an active member of our u3a for many years and I'm sure many of you will remember his charm, his impish sense of humour, the twinkle in his eyes and smiling face at the General Meetings and the groups that he attended.

Despite being excluded from school and starting work in the science industry, he returned to education, became a teacher and then a headteacher eventually winning an award for being in the top 1% of primary schools in the country.

Always under-rating his talents David's artwork, including painting and glass structures, was extremely professional and was exhibited at galleries and exhibitions in London and more locally. He'd always craved a degree in art and in his late 60s early 70s he achieved a Bachelor in Art degree and went on to achieve a Master in Art degree, specialising in glass work.

Enjoying every aspect of life, David threw himself into an extremely wide variety of activities. He could turn his hand to anything. His motto was "there's always an answer to any problem." From his involvement in magic and illusions, building extensions on houses, having a part-time mirror business followed by a printing business, qualifying as a scuba diver, zip lining in Wales, flying a microlight in France, his huge glass kiln in the garage, the many wonderful holidays. This list could go on indefinitely.

A man who truly lived life to the full and made every moment of his life worth living. David sadly died suddenly on September 11th

I would like to take this opportunity to thank all of you who sent me messages of sympathy at this extremely distressing time. There were so many thoughtful words that gave me some comfort.

*Thank you,
Shirley Hammond*

U3A Open Gardening Group. — Programme January – March 2024

Meetings on 2nd Wednesday of each month at Marple Methodist Hall, 09:45 for coffee then 10:00 for the meeting. All U3A members welcome. £3 per meeting. Do come along.

January 10	Jeff Bates – Will present on 'Colour in the Winter Garden'.
February 14	Wayne Crumpton – Manchester Bonsai Society
March 13	Trip – Plantagogo Nursery (Specialist Heuchera Growers) / Biddulph Grange

Announcements

It is with great sadness that we record the death of three of our u3a members.

Molly Davidson
Derek Hesketh
Diana Williams

We send our sincere condolences to all their family and friends



CONTACTS

Chairman: Diane Holker

chairman@mbmu3a.org.uk 01663 765710

Vice Chairman: Clare Gwilym 0161 494 22346

vicechairman@mbmu3a.org.uk

Secretary: Barbara Scholes 0161 427 6125

secretary@mbmu3a.org.uk

Treasurer: Michael Dewhurst 07562 905884

treasurer@mbmu3a.org.uk

Group Co-ordinator: Olwyn Wych 0161 285 6766

groupcoordinator@mbmu3a.org.uk

Membership Secretary: Malcolm Moss 0161 285 0881

membershipsecretary@mbmu3a.org.uk

Speaker Organiser: Vacant

Almoner: Olwyn Wych 0161 285 6766

almoner@mbmu3a.org.uk

Assistant Almoner: Pat Walker 0161 366 7453

assistantalmoner@mbmu3a.org.uk

Newsletter Editor: Malcolm Moss 0161 285 0881

newslettereditor@mbmu3a.org.uk

Outings: Hazel Bhatt 0161 427 3842

Kath Leigh 0161 427 7633

outings@mbmu3a.org.uk

Systems Manager: Kath Leigh 0161 427 7633

systemsmanager@mbmu3a.org.uk

Other Committee Members

Shirley Hammond, Sue Norcross & Ulla Mehta

Website: www.mbm3a.org.uk

National Website:

www.u3a.org.uk

National Office:

The Third Age Trust

52 Lant Street,

London, SE1 1RB



Marple, Marple Bridge & Mellor Quiz Answers

1. John Bradshaw, who lived at Marple Hall, was in 1645 the first to sign the death warrant of King Charles 1st whilst acting in his capacity as President of the High court of Justice.
2. The river wall alongside the River Goyt collapsed blocking off access to Town Street in Marple Bridge.
3. 1936.
4. 1974.
5. Merpil, Mertpille and Mertpol all meaning MARERE or "the stream at the boundary" in ancient Celtic speech.
6. Macclesfield.
7. The LIME KILNS on Strines Road.
8. 16.
9. 1870.
10. Brabyns Park.
11. During the first world war ie 1914-1918.
12. Agatha Christie.
13. 300 feet.
14. St Thomas's Mellor. The present tower dates from 1400s and the church is on the site of a place of worship from the mid 1100s.
15. Marple Bridge.
16. St Thomas's Church Vicarage, Mellor.
17. Jolly Sailor.
18. Originally the lower floor was residential but the upper floor with the eponymous SEVENTEEN WINDOWS was used as a workshop for women weavers and other textile workers.
19. In the Memorial Park and is now used by Stockport MBC as offices
20. IO is now called "Pear Tree Close" and is part of a housing estate in Marple Bridge.

Crossword Solution
Across 1. Cornish pasty 9. Code 10. Pedestrian 11. Affairs 12. Memento 14. Cassette 16. Eyerul 18. Skates 19. Rucksack 20. Astride 23. Amputee 26. Concertina 27. Inch 28. Delicatessen
Down: 2. Opera 3. Nephritis 4. Side 5. Paste 6. Sorceress 7. Yeast 8. Roof-rack 13. Metre 15. Satirical 16. Encompass 17. Unclench 21. Stood 22. Dorte 24. Unite 25. Diet

This Newsletter appears bi-monthly. The next edition will be published in January 2024

Please send items for publication by email

to newslettereditor@mbmu3a.org.uk

Any stories, articles or photographs of interest to members are welcomed.

You can read all issues of the newsletter on our website www.mbm3a.org.uk

All contributions for the next edition of the Newsletter should be received by Tuesday 2nd January at the latest