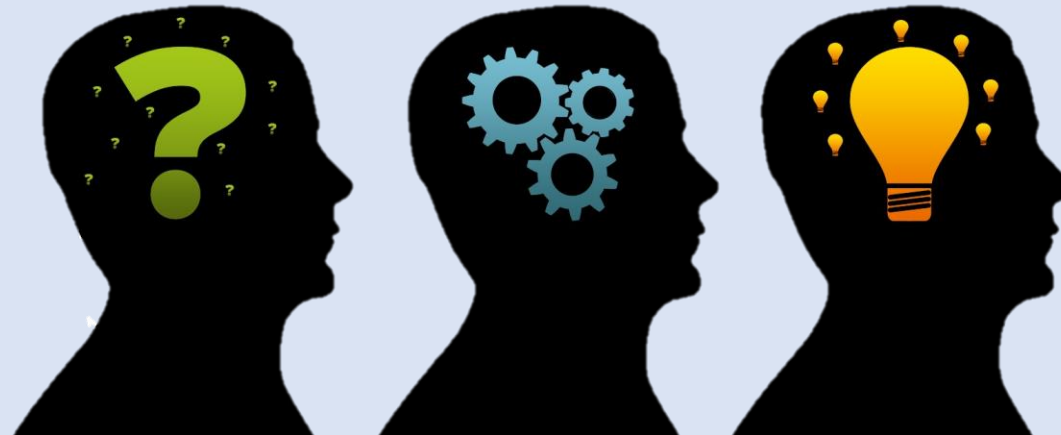


The Learning Committee



“Times of transition can enable new thinking, new ways of organising and collaborating. Transition is about understanding the challenges of switching *and* about building on the side of success: finding, joining and augmenting what has started to flourish.”

Radical Help by Hilary Cottam (page 252)



Learning Working Group recommendations:

105 recommendations:

Wide ranging and covering all aspects of learning and included accessibility, inclusion, quality assurance, content and resources and delivery.

As well as the technology and digital infrastructure requirements to make it happen.

Main challenge is how to manage it all!



Learning Working Group recommendations:

Priorities:

1. **Consideration of the diversity of our member stakeholders**
2. **Sourcing current and relevant learning content and resources**
3. **Delivering the resources and content**
4. **Ensuring accessibility and inclusion across everything**
5. **Finance: How much will it cost?**



Learning Working Group recommendations:

1. Consideration of the diversity of our member stakeholders -

- a. Individual U3A members
- b. U3A group leaders, convenors, coordinators
- c. Subject Advisors, Subject Networks, Summer Schools,
- d. Shared Learning Projects
- e. Research
- f. National Office training events, study days, resources.
- g. National Office staff



Learning Working Group recommendations:

2. Sourcing current and relevant learning content -

- a. **Where are we now? Evaluating current resources.**
- b. **What is already out there in U3As? Copyright implications.**
- c. **Where can we find other resources and how much will it cost?**
- d. **How do we curate the resources to make them easy to find?**
- e. **Who will do that?**



Learning Working Group recommendations:

2. Delivering the resources and learning content -

- a. Consider our stakeholders and how they will use the content resources.
- b. How and where will they access and use the content resources.
- c. Will this change in the future?
- d. Where will we get this information?
- e. Suspect that there will be a variety of answers and requirements.



Learning Working Group recommendations:

Ensuring accessibility and inclusion across everything:

- a. **Content and resources have to be quality assured, inclusive and where appropriate, differentiated.**
- b. **Content and resources have to be accessible to all where possible.**
- c. **When sourcing content and resources, we need to recognise that people have different learning styles.**
- d. **Content delivery approaches must allow, where possible, for all learning styles**



Action Committees:

Solution identify necessary Committees/Action Committees:

Content and Resources

Shared Learning Projects

Research Committee

Digital Infrastructure and Content Delivery

Across all strands:

Gathering Evidence Requirements

People and Processes

