

EPSON EB-X31 PROJECTOR

BASIC USERS GUIDE – PLEASE READ BEFORE USE – CONNECTING TO THE PROJECTOR [TEST VERSION]

Place the projector on a level flat surface that allows air to circulate freely around it.

- **DO NOT USE THE PROJECTOR ON ITS SIDE**
- **DO NOT DISCONNECT THE USB CABLE OR TURN OFF THE PROJECTOR UNTIL HAS THE PROJECTOR DISPLAYED AN IMAGE**

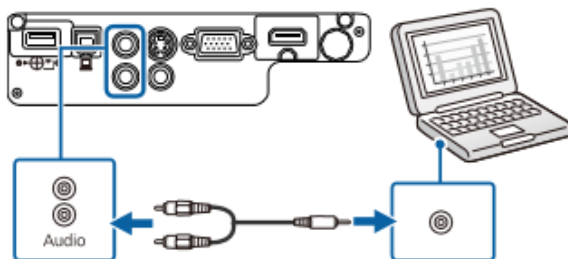
This projector can be connected to a laptop, USB, video and audio sources to display presentations, movies or other images, with or without sound. A commercially available RCA audio cable is needed for sound.

For slide shows/presentations without a computer, insert a USB/pen or flash drive or camera cable in USB-A port.

To set the projection height/angle, hold in the grey button under the lens at the front. A leg will drop down. To set the leg height hold the grey button in, adjust to desired height, then release the grey button. This will lock the height. If the image is tilted, use the adjustable back feet to adjust it.

Plug the projector in to the mains using the black lead, but do not turn on yet. The nearer the projector is to the screen, then the smaller the image becomes. If space is limited, this can be overridden somewhat via the W-T slider. [W-T = Wide – Tele]

You can play sound through the projector's speaker system by connecting a commercially available RCA audio cable to the laptop's headphone or audio-out jack. This is not supplied in the bag.



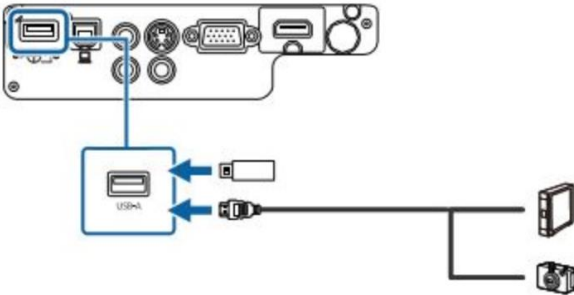
For video & audio displays – you need to install the Epson USB Display software to your laptop. See p22 on the disc in the carrier case's front pocket for instructions. This only needs to be done the once.

To connect to a laptop – connect using the double-ended 15-DIN VGA cable [black with blue ends]. [VGA = Video Graphics Array]. This will only go in one way, but it does not matter which end goes where. Leave the screws of both ends loose because if the cable is accidentally pulled sharply during use, then the cable will dislodge instead of dragging the projector/laptop with it.

EPSON EB-X31 PROJECTOR

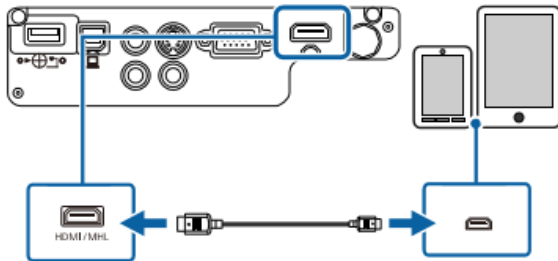
NOTE: To connect a Mac that has only a Mini Display Port, Thunderbolt port, or Mini-DVI port for video output, you need an adapter that allows you to connect to the projector's VGA video port. This is not supplied in the bag. Contact Apple for compatible adapter options.

To connect a USB – Insert your USB flash/pen drive in the USB_A port



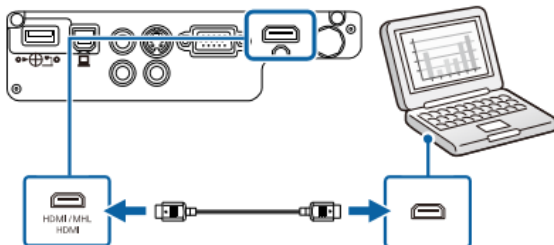
To disconnect, remove it from the projector.

To connect to a mobile device [e.g. smart phone or tablet] – Connect as above using the white MHL cable. [MHL = Mobile High-definition Link]. You may need an extra connecting VGA cable to link your device to the MHL cable. The projector only works if your mobile device is compatible.



Disconnecting a USB Device - Turn off & unplug the USB device, THEN disconnect it from the projector.

Connecting to a Computer for HDMI Video and Audio - Connect the HDMI cable to your computer's HDMI output port and to the projector.



Connecting to Video Sources - Connect the HDMI cable to your video source's HDMI output port and to the projector's HDMI port.

EPSON EB-X31 PROJECTOR

projector beeps twice, the lamp turns off, and the status indicator turns off. Ensure the power indicator is blue (but not flashing) and the status indicator is off, then unplug the power cord. There is no cool-down period so you can pack up the projector for transport right away. **Remember to close the projector's lens cover to prevent dust entering.**

REMOTE CONTROL - Aim it at the projector's receivers within 6 metres and 15 degrees. Volume controls are on the projector top and the remote control.

