

## Next Meeting:

**Gaywood Community Centre on 8th March. Doors open up at 9.30am for registration.**

**The meeting begins at 10.15am.**

Today, we are going to be entertained by one of our newer u3a groups,

### The Shanty Singers

Formed less than a year ago, this will be their first public performance. Under the leadership of Mick Norman, they will be singing Shanties and Sea Songs from around the world, both traditional and modern.



The deadline for submissions to the next Bulletin is: **3rd April.**

## **Last Month's Speaker: Penny Hubbard**

---

On February 9<sup>th</sup>, Penny Hubbard gave us her illustrated talk 'Educating Women at Cambridge, a talk which Penny said could also be called 'Nasty Forward Minxes or Radical Pioneers' – a reference to Adam Sedgwick, Woodwardian professor of Geology at Cambridge, who was vociferously opposed to women as full members of the University, referring to them in 1863 as 'nasty, forward minxes'. Throughout the talk Penny showed us photographs of the various founders, buildings, gardens, many of the alumnae, and gave us details of some of her meetings with the more recent and famous women who continue to support and promote Newnham College.



A brief personal history: Penny was born the 1<sup>st</sup> of 3 daughters to a Manchester working class family of bright, interested parents with no history of university education in the family. In 1979 Penny sat the Oxbridge exam and gained a scholarship to Newnham College, an all-female college, with a bursary of £40 per year. Penny read English Literature, switching to Law after her first year, graduated with a 2:1 and had a successful 17-year career as a commercial property development solicitor where she was often the only woman at the table. Then Penny changed direction and was appointed to the role of Development Director and Fellow at the all-female Newnham College, working closely with students and raising £32 million for bursaries for future students over 11 very happy years.

Penny now gave us a brief history of Newnham college and education for women generally. Famous Newnham graduates include Germaine Greer, Joan Bakewell, Virginia Woolf, Miriam Margolyes, Sylvia Plath, Patricia Hewitt, Jane Goodall, Emma Thompson, Diane Abbott, Mary Beard, Rosalind Franklin and Millicent Fawcett. The college has typically 400 undergraduates, 300 postgraduates, and 70 academics. Traditionally universities were exclusively male; in 1900 most females received little formal schooling, the working classes learning basic reading, writing, arithmetic and needlework. Indeed, the first Newnham principal herself had never been a pupil in a school. The general (male) view was that too much education was detrimental and could even affect fertility in women. The college was founded by a group, including Henry Sidgwick and suffragist Millicent Garrett Fawcett, who organized Lectures for Ladies. In 1871 Henry Sidgwick rented number 74 Regent Street to house 5 women who lived too far away to attend these lectures, appointing Anne Jemima Clough president of the college. Money was raised to provide the first purpose-built Newnham college hall; building continued steadily, with three more halls, a laboratory and a library; Basil Champneys was the architect, designing in Queen Ann style, giving a flow and unity to the overall look of the college buildings, with attractive rooflines, windows and balconies. Building continues to the present.

Arrangements for women to sit examinations had to be negotiated with each examiner individually. In 1868 Cambridge's Local Examinations Board allowed women to take exams for the first time. Lasting change within the university occurred when the first female colleges were formed, and following the foundation of Girton College (1869) and Newnham (1871) women were allowed into lectures, but at the discretion of the lecturer. By 1881 a general permission to sit examinations was negotiated. In 1890 the Newnham student Philippa Fawcett was ranked above all the male students, i.e. top in the Mathematical Tripos. By the First World War most Newnham students were going into degree-level courses, although women were not yet awarded the title of degrees. Women now tried once more to secure inclusion, this time asking not only for the titles of degrees but also for the privileges and involvement in university government that possession of degrees proper would bring. In Cambridge the proposal was defeated again in 1921, with students having to settle for the titles – the much-joked-about BA tit – but not the substance of

degrees. This time the male undergraduates celebrating victory over the women used a handcart as a battering ram to destroy the lower half of the bronze gates at Newnham, a memorial to Anne Clough.

Women could hold university posts but could not speak or vote in the affairs of their own departments or of the university as a whole. In 1948 women were finally admitted to full membership of the university, although the university still retained powers to limit their numbers. There is a long-standing Newnham rowing club, founded in 1893 and by 2015 the team was finally allowed to compete with the men's rowing teams. The Valerie Eliot Fund for English has been set up with a generous donation of over £1 million, by Valerie Eliot, second wife of the late Nobel Prize-winning poet T. S. Eliot, to create a lectureship. She has been an Honorary Fellow of Newnham College for the past 20 years. Valerie Eliot was instrumental in encouraging Andrew Lloyd Webber to transform T. S. Eliot's *Old Possum's Book of Practical Cats* from a beloved collection of poems into a record-breaking musical, and the charity was set up in part with funds from the long-running musical. This guarantees in perpetuity the tradition of first class English teaching at Newnham.

*Sheila Burney*

### Membership Cards/Name Badges

---

Historically we were able to purchase circular coloured name badges. You may have seen some members wearing them at monthly meetings. They are a useful tool for breaking the ice in conversations with someone you do not know. Unfortunately this type of badge is now unavailable.

If you would like a name badge we now have an alternative:

Your details on paper or card held in transparent plastic holders. These can be either clipped or pinned onto your clothes.

There are 2 alternatives for your details.

1. Simply write your name on a provided insert card.
2. Print off, on paper, your membership card from our website and cut to size, sample below.

In either case place your details into the holder.



To print off your membership card you need to access your individual information via the members' portal on our website. The first time you use it you need to register with your member's number which is found on your renewal notice. Subsequent uses are simple. But why would you use it more than once? There are other benefits, you can change address, phone no etc. but you can also pay your membership by debit or credit card. This payment method is straight forward and minimises effort in keeping the membership record correct.

Go to our website, [www.kingslynnu3a.org.uk](http://www.kingslynnu3a.org.uk) and choose Membership. A page will open where all is explained.

The holders and insert cards for writing your name will be available at monthly meetings.

*John Wood*

## Why I Am In The u3a.....

---



*By contrast, this month we feature one our longest serving members, **Mary Cross** who along with her husband **Gerald** are among the select few in our u3a who were amongst the first 100 to join.*

In July 2000, fed up with the traffic density in the Thames Valley we came to live in quiet Fair Green just off the A47. How things change!!!

Mary, a retired community nurse, over 55 and not in full time employment was already a u3a member in Reading. Gerald had retired from Courage's Brewery but now had a full time job making a garden from a half acre of rough paddock PLUS we were keen motorhomes travelling constantly in the UK, France, Portugal and Spain.

Meetings were then held in the Park Resource Centre hall near Hospital Walk. Membership was around 140 mark and increasing so parking was a problem - hence at the time there was a very unpopular move to North Lynn Community centre.

I think there were 2 book groups, Stitchery (led by Brigitte Bailey) whose member made the embroidered tale cover still in use today, French Conversation (Jill Price), Gardening meetings and trips, Outings (Dvid & Liz Camm), Art Appreciation (Shirley Jackson), Pétanque (which Bob Rawlings started in 2000), Local History (Ann Bolton) and a Lunch Group.

My Interest was Art Appreciation - we both enjoyed the Garden Group and the Monthly Speakers. We went to Buckingham Palace, The Fitzwilliam, Kew Gardens, and Birmingham Botanical Gardens. We have played Pétanque for 23 years, but only for pleasure now - note as part of 'The Knights' in the West Norfolk League. I enjoyed the Drama Group and Gerald has been on stage twice in Christmas shows with different lady stars.

It was always difficult to get committee places filled - Val Shaw and I helped part time as we were both away so much. I was a Groups Co-ordinator, finally handing over to Val Sparkes.

I'm not sure when the proper walking group led by Adair and Mary Cox ceased, but Gerald and others led The Sunday Strollers - short easy walks with all group members taking turns to plan/lead routes.



**Saturday, 2 March 2024**

When Shirley Jackson was unable to lead Art Appreciation after many years I became group leader for several years myself but then Covid restrictions got in the way.

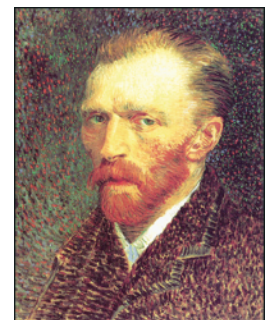
There was a Friday lunch group for all led by Di Brown but it became obvious that many members were ladies on their own at weekends, so Jo Walters started a Sunday lunch group for them with Les Watson and Gerald joining with Doris and me to make a pleasant atmosphere. The current Friday group derives from that beginning (Sunday lunches are no longer u3a - just a group of friends)

I think the current King's Lynn members are a much more welcoming group these days although the bureaucracy is daunting. It is good to see 'younger' members at meetings who will I hope carry on the good work us 'oldies' started.

*Mary Cross*

## **The Vincent Van Gogh Family Tree**

---



His dizzy aunt . . . . .Verti Gogh  
The brother who ate prunes . . . . .Gotta Gogh  
His magician uncle . . . . .Where Diddy Gogh  
His Mexican cousin . . . . .A Mee Gogh  
The Mexican cousin's American half-brother . . . . .Gring Gogh  
The nephew who drove a stagecoach . . . . .Wells Far Gogh  
The constipated uncle . . . . .Can't Gogh  
The ballroom dancing aunt . . . . .Tang Gogh  
The bird-watching uncle . . . . .Flamin Gogh  
The little bouncy nephew . . . . .Poe Gogh  
His sister who loved disco dancing . . . . .Go Gogh  
The brother with lower back pain . . . . .Lum Bay Gogh  
The niece who drives a motorhome . . . . .Winnie Bay Gogh

*Michael Church*

**Saturday, 2 March 2024**

## **Outing to Lavenham and Beth Chatto Gardens**

---



Ann Higgins is now taking bookings for this trip, which will take place on

**Friday 24th May 2024**

Leaving Gaywood Library at 9am, there will be 90 minutes spent at the medieval village of Lavenham in Suffolk, before travelling on for a further 45 minutes to Beth Chatto Gardens, where there is a cafe available for a light lunch. We will have around two hours to visit the gardens before we leave and return to Gaywood at about 18:25.

**The cost is £29.00 only via the booking form sent out with this Bulletin.**

## **Theatre Trips**

---

Tickets for '**Moulin Rouge**' are not available for large groups until September or October, .....however there are tickets for '**Guys and Dolls**' or '**Sister Act**'..... at the next meeting I will put a board out for members to indicate which show (if any) they would like to see and we can take it from there.

*Sylvia Cliffe*

## **King's Lynn to Walsingham Way**

---

Dr Paul Richards, our regular speaker and historic walk guide, is trying to garner support for the development of a long-distance route following in the footsteps of generations of pilgrims to Walsingham, matching the one from Norwich opened in 2022. He has sent the following information for anyone willing to help.

***KING'S LYNN WALSINGHAM WAY PROJECT GROUP***  
*(A subcommittee of the Parish Trust of St Margaret & St Nicholas)*

*This small group has been meeting since 2021 under the aegis of the Parish Trust. Its project goal is to establish a modern-day walking route for all from King's Lynn to Walsingham. In medieval England Bishop's Lynn was a pilgrim port from where tens of thousands disembarked every Easter to walk the 24 miles*

**Saturday, 2 March 2024**

to "England's Nazareth". These travellers came from northern Britain and Hanseatic ships brought many from Europe.

To foster cultural tourism and health/well-being as well as village economies are the specific aims. The trail has been included in the east coast cultural route for cyclists recently unfolded by the English Hanseatic towns. There will also be focus on that medieval celebrity from Bishop's Lynn – Margery Kempe – a famous pilgrim. For both walkers and cyclists the starting point is King's Lynn Minster.

The group has now established a King's Lynn to Walsingham route in consultation with parish councils and Norfolk CC, and a business brochure has been written to attract funding. The principal costs are wayside signposts and a part-time project manager to work over two years.

Anyone wishing to contribute in some way, or wishing for more information, may contact Paul. His email is [p.richlynn@btinternet.com](mailto:p.richlynn@btinternet.com)

Norma Chaplin  
Local History group

## Environment Group: The proposed Wash Barrage

---

In February we attended Downham u3a Climate Conversations Group's meeting. Downham's leader, Carroll Cowin, had asked Andy Bullen, Borough Councillor on the Environment and Communities Committee, to talk to us about the proposed barrage across the Wash.

A company called Centre Port (<https://www.centreport.uk>) are proposing to build a barrage across The Wash from Lincolnshire to Norfolk. They are calling it **The World's First Tidal Powered Deep Sea Container Port**. To say that this would be a major transformation to the whole area is a wild understatement. The concerns about the proposals are:-

1. Is a container port really necessary in the first place with Immingham Docks and Felixstowe close by? What about businesses that operate within the Wash?
2. The sand dredged up to create the deep water port would not be suitable as building material for the barrage. Where does all the dredged sand go?
3. The planned site in Norfolk is at Holme next the Sea. The road infrastructure in Norfolk is totally insufficient for the thousands of lorries needed to transport containers to and from the port. It is planned to build a dual carriageway road with lighting on the barrage stretching from Holme to Gibraltar Point in Lincolnshire.
4. A huge acreage would be needed at Holme to receive the hundreds of lorries each day and for the supporting industries to process the contents of the containers on site for onward distribution.

**Saturday, 2 March 2024**

Centre Port are also promising to use the tidal surge to create clean energy. At present this is untried technology. (The Severn Barrage has not so far been built.) They also claim that it will offer flood protection to thousands of homes, but in fact it is rainfall rather than tidal surges that is the major cause of flooding.

The company also claim that the project would protect the biodiversity of the Wash area but it is estimated that the barrage would be a major disruption and have an incalculable negative impact on wildlife. The RSPB are concerned that the huge numbers of pink footed geese would just disappear.

The cost of the project is currently put at £3bn. Although it is by no means certain that it will go ahead, the group felt that the proposals are deeply worrying. We plan to keep ourselves informed about the developments and likely effects of the project. A first step would be to write to our Borough Councillor and MP to advise them of our concerns.

If you type Wash Barrage Scheme in to your web browser you will find plenty of information about it, plus concerns about the effect on the wildlife.

Everyday plastics and Greenpeace are running The Big Plastic Count, in March and would love for the members of the Kings Lynn U3A to join their mission. We would like to help them by sharing the registration link with you all:

[www.thebigplasticcount.com/U3A](http://www.thebigplasticcount.com/U3A).

*Gillian Gerrard  
Linda Creed*

## GROUP NOTICES as of 28 February 2024

---

**Dana Gower: Group Co-ordinator**

### **Group news:**

**(Please contact the Group Leaders if you would like further information about the Groups or me (Dana) if you have any queries.**

**Birdwatching:** Astronomical winter is now behind us, hopefully this will give rise to better birding weather. The group is having an indoor meeting at the Gaywood Scout Hut on **Monday 4 March** at 1400hrs, where the main subject talk will Warblers by David Hennessy.

If you have any video or pictures, please bring them along so they can be shown. Also please tell us of any interesting sightings.

On **8 April**, 10 am visit to **Roydon Common** followed by annual group meal at Farmers Arms, Knights Hill.

John Marrow:



*Cattle Egrets*

**Book group 2:** We are a small, sociable group and meet on the first Wednesday afternoon of each month. We chat about books, TV programmes, films and local cultural events. We all have different opinions which leads to some interesting and often heated discussions!



## Saturday, 2 March 2024

We plan our book reads some time in advance and it was very amusing when one of our members confessed she had accidentally read the wrong book for that month!

Rosemary Engelmann:

**Creative Writing:** The creative writing group met on Monday 19<sup>th</sup> February. We all read out our stories with the theme 'Looking for Love' and discussed them. It never fails to impress me how different they all are.

After tea and cake (of course) we did a piece of free writing titled Mother and some very thought-provoking work emerged!

Our homework for next month is 'The History of Shoes in Your Life.' Can't wait to hear these essays!

Our group is now full. If anyone would like to join, please add your name to my waiting list.

Julie Newman:

### Environment Group

This March, Everyday Plastics are teaming up with Greenpeace UK to run [The Big Plastic Count](https://thebigplasticcount.com), the UK's largest investigation into household plastic waste. Their goal is to highlight the urgency and scale of the plastic problem and empower individuals to play a part in helping solve the plastic crisis. They would love for the members of the Kings Lynn U3A to join their mission. They would like you to help them by sharing on the registration link: [thebigplasticcount.com/U3A](https://thebigplasticcount.com/U3A)

Linda Creed:

**Evening Meals:** The next evening meal will be on 28 March at The Stuart House Hotel, Goodwins Road, King's Lynn.

Maggie Orage:

Bob Caseley:

**Excursion Group:** This group have a number of trips planned. A booking form for Thursford Christmas Spectacular 17 December, went out with the last bulletin and a lot of members have already booked. A second booking form for Lavenham and Beth Chatto Gardens 24 May, is attached with this issue of the bulletin. Please complete and get back to me by 24 April, after which any spare tickets will be offered to other u3a groups. If you need a booking form and can't find the one sent, just send me an email and I will send another.

Linda Creed:

**Friday Lunch:** Next Friday lunch will be on Friday, **8 March 2024** (note earlier date), venue TBA, followed by 19 April, venue TBA.

Brian Hillman:

**Petanque 2 and 3:** Wednesday and Thursday, week beginning 1 March play starts at 2 pm. Please bring £2 for a half time beverage.

Bob Hindry::

Tony Bellars:

**Petanque 5:** Week beginning 1 March, play will start at 2pm. We are now full.

Sue Burman:

**Saturday, 2 March 2024**

**Scottish Country Dancing:** is resuming on Thursday, 29 February 2024, after our half term break. As always, new members are welcome.  
Bill Brakes:

**Short Walks:** Next walk will be on **Wednesday 13 March**, starting at 10:00 hrs from the car park adjacent to the Gaywood Community Centre, Gayton Road, King's Lynn PE30 4ED. It is approximately 3 –3.5 miles and takes around 1 – 1.5 hours at a leisurely pace. The route is mostly made-up path with some grass and mud, if weather had been wet, also passing housing. There is a cafe, Pavillion, the other side of Gaywood Community Centre for those who would like refreshments at the end of walk.  
Jan Barnes:



Rotary Club of Kings Lynn Priory

**SENIOR CITIZENS FILM CLUB**

**Monday 18th March and  
Wednesday 20th March**

**KINGS LYNN CORN EXCHANGE CINEMA**



**LES MISERABLES, STARRING RUSSELL CROWE AND ANNE HATHAWAY**

Meet at 10.00 for tea and coffee  
£3 per ticket  
Film starts at 10.45

Booking is essential, to secure your tickets email:  
Bharti.Patel@west-norfolk.gov.uk  
07375375404.

Kings Lynn Town Hall

Afternoon Tea

**Cancelled**

The Mayor of Kings Lynn & West Norfolk,  
Cllr Margaret Wilkinson

Invites you to an afternoon tea in the splendid surroundings of the Town Hall

All proceeds will go to the Mayor's Charities:

[Norfolk & Waveney Mind & The Pandora Project](#)

**Tickets £20 pp**

**RSVP by 10 March 2024**

Cheques Payable to the Mayor's Charity