

# HOWDEN & DISTRICT NEWSLETTER

**u3a**  
Howden & District  
March 2024

## u3a Club:

Howden Shire Hall, 28<sup>th</sup> March, 10:30



Ukuleles: Bare Necessities, Blue Suede Shoes

Sue Long, Raconteur: All tins bright and  
Beautiful

Henry Farrar: Cameraman Extraordinaire

**Mike Smith**

"Still Lazy after all these years"



*Rhythm  
and Rhyme*

*...with time for a song*

John Ray: My Homeland and the  
Wide World

£2, including Coffee

All welcome

April Speaker

Thurs 25<sup>th</sup> April

Shire Hall, Howden, 10:30

Pat Collard

Who wants to be a Millionaire

## Ukulele Group

Hi, we are the ukulele group playing at Airmyn Village Hall on the 1st and 3rd Wednesday of the month. If you already play and would like to join us please contact George on 07932571379"

## Strollers

The next stroll will be on **Wednesday 3 April starting at 10.30 a.m. from the Hotham Arms, Hotham YO43 4UD.** The stroll will be about 4 miles, walking to the top of Hotham with wonderful views over the Vale of York and then into Hotham park and returning past the Hall to the Hotham Arms.

Optional lunch will be at the Hotham Arms with names please to Ray indicating if you wish to stay for lunch.

## Walkers

The walk on **Thursday 11<sup>th</sup> April commences from St James' Church at Rawcliffe.** The 6.7 mile, clockwise, relatively flat route heads South to follow Dobella Lane to Rawcliffe Bridge, briefly along the Air and Calder canal to Sugar Mill Ponds then along Bridge Lane to cross the Railway and A61. Returning via the bank of the river Aire

Assemble for a 10:00 start near rear of the Church, DN14 8QF. Optional lunch will be taken afterwards at The Green Inn.

Names to Jeff please using the contact form on the web site



**HOWDEN ROTARY CLUB CHARITY WALK**

Bring All the Family & Walk for the  
**CHARITY OF YOUR CHOICE**

You organise the sponsorship and walkers—Rotary provides the support

**Sunday 14th April 2024** (Registration 8am Walk starts 8.30am)

**Start & Finish at Goole RUFC Westfield La, Goole DN14 5PW**

The walk is approx. 5 miles in distance mainly along the river bank with refreshments available on completion. Email [howdenrotary@gmail.com](mailto:howdenrotary@gmail.com) for an information pack.

*"Howden Rotary - Supporting the Local Community"*

The poster features silhouettes of a diverse group of people, including adults and children, walking together on a grassy path. The background is a light blue sky with a green tree silhouette on the left. The Rotary Club logo is visible in the top corners.

The 2024 season will start on the 1<sup>st</sup> April & run through to the 30<sup>th</sup> October.

If you would like to **join** a French Boules Group, the **Friday Afternoon Group** has spaces for new players. No experience necessary & boules can be provided for starters.

**FRIDAY 5<sup>TH</sup> APRIL 14.00 to 16.00**

## Petanque Pitch, The Ashes Park, Howden

**To book your place** - please contact me via the Howden & District u3a website  
<https://u3asites.org.uk/howden/home>

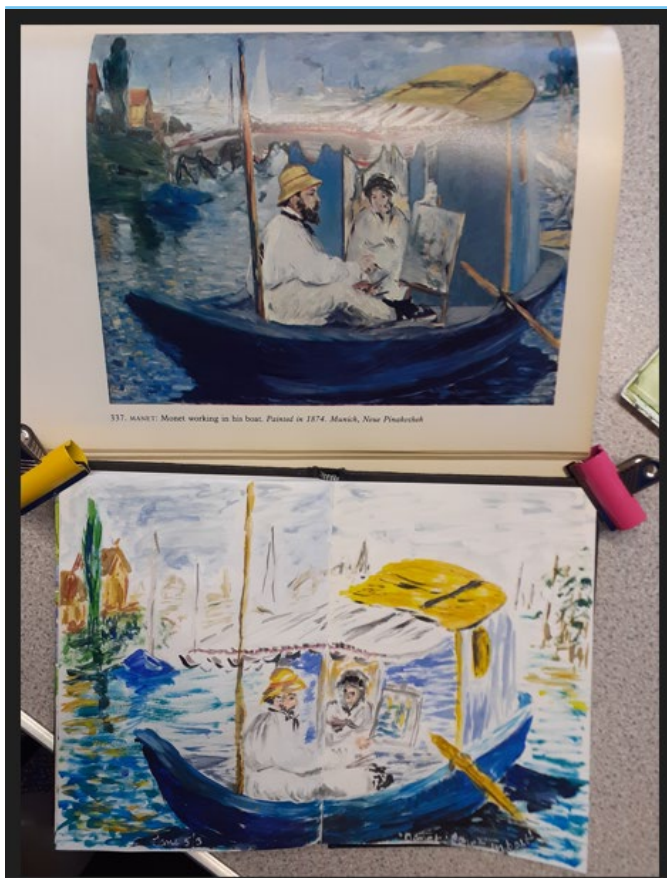
## June, French Boules Coordinator

[illegible]

Our next meeting will be on **Tuesday 16<sup>th</sup> April** when we will be having a talk on the topic of **Tectonic Plates**. The meeting starts at **10.00am**.

**Come along & give Science a try.**





## Sketchbook Group

The Sketchbook group had a shot at "learning from the expert" in an effort to develop looser styles. Here we have the version of "Jane, painting Manet, painting Monet"!! If you fancy joining us we meet the first Tuesday of the month at 2pm in Rawcliffe Village Hall

### CONTACT DETAILS

Use the Contact button on the Website <https://u3asites.org.uk/howden>

For those without Internet access please make contact via your Group Coordinator. Letters for the committee can be addressed to: Howden and District U3A Committee, c/o Howden Shire Hall, 11 Market Place, Howden, DN14 7BJ