

# Altrincham History

**Trafford**



Coat of Arms  
of the former  
Altrincham  
Municipal Borough Council

# Early history

- Neolithic arrowheads at Altrincham /Dunham 2500-1800BC
- 1084 Domesday Book DONEHAM and BOPALONE
- Roman Road – Chester to York (through Broadheath area)
- Aldringeham – homestead of Aldhere's people
- A milestone along the Barton Bridge and Moses Gate turnpike road near Eccles, showing the spelling of "Altringham"

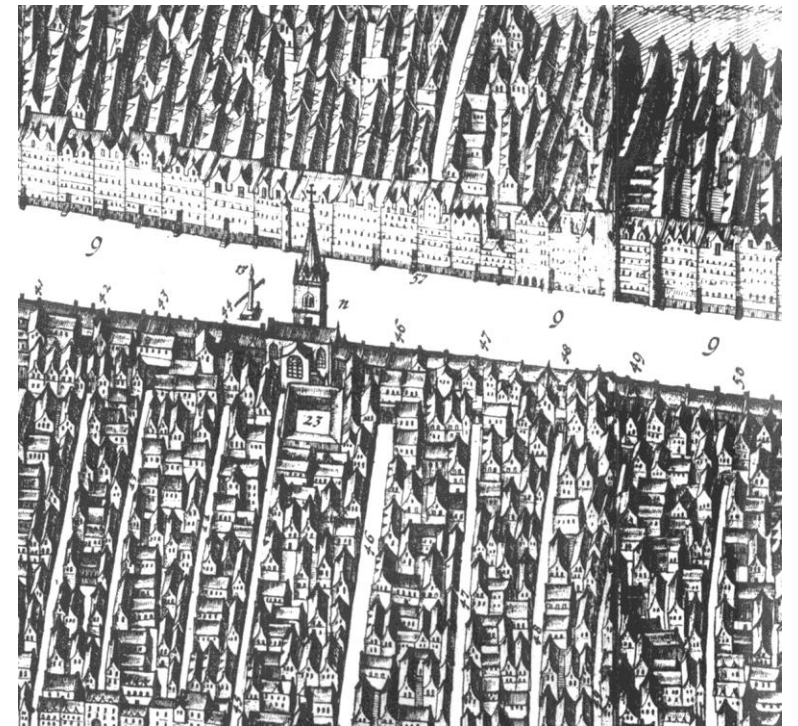


# 13<sup>th</sup> Century

- 1983 excavation, S T A G, discovered evidence that the house dated from the 13th or 14th century
- Armies camped on nearby Bowdon Downs.
- Free Borough 1290, enabled Tax collection
- Free Borough ruled by Court Leet - peace-keeping and regulating Markets

# 14th century

- St James's Fair (SAMJAM) established in 1319 – (until 1895)
- Court of Pye Powder (settling disputes arising at the Fair)
- 120 Burgage Plots (status symbol) –  
Medieval long, thin plot of land



# 15<sup>th</sup>/16<sup>th</sup> Century

- Elected Mayor since 1452
- 16<sup>th</sup> Century Altrincham children attending Bowdon Church school

# 17th Century

- During the English Civil War (1642-1651) men from Altrincham fought for the 'Parliamentarian' Sir George Booth



- 1664 Hearth Tax – population = 636 – largest of the local settlements

# 18<sup>th</sup> Century

- 1765 Turnpikes
- Vegetables!
- Early schools begin
  
- Bridgewater Canal 1765
- Bridge at Seamons Moss  
(Listed building)





The Old Market  
Tavern



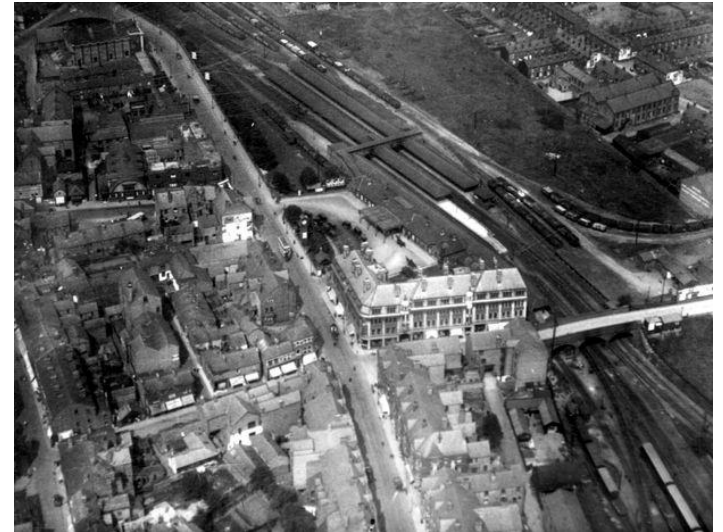
Brooke's Bank





Mills, Castle Mills  
near Altrincham, in  
1910

Altrincham, Railway Station, in 1928.

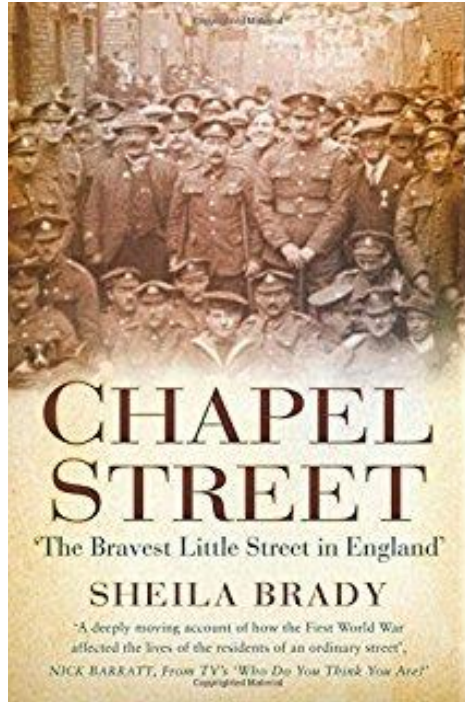


# 19<sup>th</sup> Century

- Industrial revolution nearly doubled population due to the late industrialisation of the area
- 1801 - 4 Cotton Mills, (closed by 1851 census),
- Manchester South Junction and Altrincham Railway 1849
- Heavier industry comes to Broadheath, (declined in late 20<sup>th</sup> century)
- 1886 Court Leet abolished.
- 1885 Broadheath Industrial area founded by Harry Grey 8<sup>th</sup> Earl of Stamford to attract businesses.
- Altrincham as a Parliamentary Constituency was created in 1885.

# 20<sup>th</sup>/21<sup>st</sup> Century

- 1973 Altrincham became part of Metropolitan Borough of Trafford
- Court Leet re-formed to maintain the memory of the Freedom granted
- “Beating the Bounds”
- Court Leet members wear Green Cloaks, Red Hats and Chains of Office bearing the Coat of Arms
- In 1931 Altrincham became one of Great Britain's first [electrified](#) railway lines
- Broadheath Station served the northern part of Altrincham between 1853 and 1962, on the line from Manchester, via Lymm to Warrington. [\[117\]](#)
- June 1992 Metrolink opened in Altrincham



Farewell: Crowds gather on Chapel Street in 1914 to wish the departing men good luck



# 21<sup>st</sup> Century: Altrincham -best place to live in North West?



Or is it.....?

