

LIEUT. WILLIAM GRAY RAWLINSON

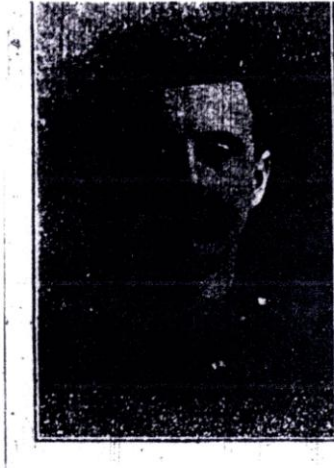
DUKE OF CORNWALL'S LIGHT INFANTRY

1890 - 15.3.1915

Maire Matthews U3A

WILLIAM GRAY RAWLINSON:

1890 – 1915



The birth certificate of **William Gray Rawlinson** shows that he was born at Duddon Hall, Millom, Bootle Cumbria, on the 2nd, April 1890. Duddon Hall was a considerably large estate indicating that the family were very wealthy. He was the only child of **William Millers Rawlinson** and Rosetta Ellen Rawlinson (formerly, Rigge)



Duddon Hall

His father, **William Millers Rawlinson**: 1863 – 1897, inherited Duddon Hall, near Millom from his father, **Major William Sawrey Rawlinson** (1835 – 1875) on his death (aged 40) and lived there until his own death in 1897, (aged 33).

William Millers Rawlinson was educated through the public school system finally graduating from Cambridge University. However, subsequent census records show no meaningful employment other than that of 'man of own means'.

He married Rosetta Ellen Rigge, also from a well connected family in June, 1889 at St. George, Hanover Street, London and their son, [William Gray](#), was born the following year.

In 1903, six years after the death of her husband, Rosetta married George Rathbone, a musician and composer. They married in St. Pancras, London (Parish Register). According to the 'red books', they lived in Grange, initially at Fellside Cottage and later moving to Yewbarrow, (the address given in the will of her son). Finally they located to to Aynsome House in Field Broughton.

Census Records show that that from an early age [William Gray Rawlinson](#) attended various prestigious boarding schools, i.e. Lockyers Park, Hertfordshire, Shrewsbury and Sandhurst Military College where he served time overseas before the outbreak of the First World War. Records indicate that he spent some time in Mauritius and South Africa at this time.



Sandhurst Military College

At the outbreak of the war he was serving in Hong Kong but his regiment returned to the UK to refit before being sent to the front where he was constantly in the trenches. He was killed in the Battle of St. Eloi.

The following record shows William Gray Rawlinson was awarded the 1914 - 15 Star for his bravery.

award Rolls, 1914-1920 for W G Rawlinson

UK, WWI Service Medal and Award Rolls, 1914-1920 for W G Rawlinson

Record Index

Name: W G Rawlinson
Military Year: 1914-1915
Rank: Lieutenant
Medal Awarded: 1914-15 Star
Regiment or Corps: Duke of Cornwall's Light Infantry

Source Information

Record Uri: <http://search.ancestry.co.uk/cgi-bin/sse.dll?indiv=1&db=|WOServiceMedalAwardRolls&h=5907621>

Source Citation: The National Archives of the UK; Kew, Surrey, England; *WWI Service Medal and Award Rolls*; Class: WO 329; Piece Number: 2949

Source Information: Ancestry.com. *UK, WWI Service Medal and Award Rolls, 1914-1920* [database on-line]. Provo, UT, USA: Ancestry.com Operations, Inc., 2014. Original data: War Office and Air Ministry. *Service Medal and Award Rolls, First World War. WO329*. The National Archives of the UK, Kew, Surrey, England.

Local Roll of Honour.

LIEUT. W. G. RAWLINSON.

On his death the following article in
The Westmorland Gazette paid tribute to him

Lieut. William Gray Rawlinson, 2nd Battalion Duke of Cornwall's Light Infantry, killed at St. Eloi, was born on April the 2nd, 1890. He was the only son of the late William Millers Rawlinson, of Duddon Hall, Broughton-in-Furness, and of Mrs. George Rathbone, of Yewcliffe, Grange; his maternal grandmother being the late Mrs. Rigge, of Wood Broughton. He was educated at Lockers Park, Shrewsbury, and Sandhurst. He received his commission in 1910 and was promoted in 1912. On receiving his commission he joined his regiment in South Africa, where he remained for about three years. During this period he spent a short leave on an adventurous big game shooting expedition in the wilds of the Zambesi, and brought home many interesting trophies. At the outbreak of the war he was with his regiment at Hong Kong, China, and did good work in the defence of the Island during the anxious days preceding the bombardment of Tsingtau. The regiment was then ordered home to re-fit, and after a few weeks in camp at Winchester proceeded to the front, a little before Christmas. Since then he was constantly in the trenches, when he seems to have had a strenuous time, never forgetting, however, to write home the most cheerful letters two or three times a week. It is believed that he fell leading his men in the terrible battle of St. Eloi on March the 15th. "Eye-witness," in his notice of this fierce fighting, says: "Of the gallantry of the regimental officers throughout it is unnecessary to speak." Those who knew Lieut. Rawlinson must feel how true these words are in regard to him. He came of a fighting stock that knew no fear. As long ago as 1643 Capt. William Rawlinson, of Graythwaite, raised in Furness a troop of volunteers consisting of 70 horse, which he maintained without charge to the state and kept in readiness for service in the war between King and Parliament. His grandfather was Major Rawlinson, of the 12th Lancers, and of the 6th Inniskilling Dragoons, who fought through the Crimean campaign, and he was in the famous charge at Balaklava. Col. Rawlinson, of the 3rd Dragoons, was Lieut. Rawlinson's great uncle. Major Rawlinson of Broughton Bank, who died about 18 months ago as a result of the South African War, was also in the 2nd Duke of Cornwall's, the same regiment as his nephew. He served in that war with distinction, was mentioned in despatches, and received the Queen's medal with five clasps. Lieut. Rawlinson was a fine shot, a clever polo player, and a keen motorist. He endeared himself to rich and poor, by his kind and genial nature; and although mourned by a large circle of friends, his full and splendid life here, though cut short so soon, will no doubt be an inspiration and encouragement to those he has left behind.

There was no body and as such his death is commemorated on the Menin Gate Memorial - Panel 20, Ypres, Belgium.



Menin Gate, Ypres, Belgium

Locally his death is featured on the garden memorial in Grange Over Sands

**MEMORIAL DEDICATED TO LOCAL MEN WHO DIED 1914 -18 WAR
GARDENS ; GRANGE OVER SANDS**



Lancashire Lieutenant William Gray Rawlinson. Age 24. A Coy. 2nd Batt.
Duke of Cornwall's Light Infantry. K.I.A. 14th March 1915. St. Eloi, Ypres.
Commemorated on Panel 20 of the Menin Gate Memorial, Ypres. Son of the
late Wm. Millers Rawlinson of Duddon Hall, Broughton, Furness and Mrs
Rosetta Rathbone (formerly Rawlinson) of Aynsome House, Grange-over-Sands.

**ST. PETER'S CHURCH,
FIELD BROUGHTON**

**Stained glass window dedicated by his mother
Rosette Ellen Rathborne**



Ancestral Chart

Chart No. _____

John Job Rawlinson

CONT. ON CHART

b. 27.3.1798 - 1864
 place: Graithwaite Hall, Hawkshead
 m. 8.2.1831
Mary Romney
 1809 - (Whitefistock Hall)
 CONT. ON CHART

Major William Sawrey Rawlinson

BORN 29.5.1835
 PLACE Graythwaite
 MARRIED 1862
 PLACE St. George, London
 DIED 1875
 PLACE

Elizabeth Mary Brooke

BORN
 PLACE
 DIED
 PLACE

CONT. ON CHART

William Gray Rawlinson

BORN 2.4.1890
 PLACE Duddon Hall, Millom
 MARRIED
 PLACE 14.3.1916
 PLACE St. Eloi, France

NAME OF SPOUSE
Unmarried

William Millers Rawlinson

BORN 20.4.1863
 PLACE Duddon Hall, Millom
 MARRIED 1889
 PLACE St. George, London
 DIED 20.3.1887
 PLACE Wood Brighton Cartmel

Henry Fletcher Rigge

BORN 1810
 PLACE
 MARRIED 1849
 PLACE Ulverston
 DIED 1887
 PLACE Ulverston

Rosetta Ellen Rigge

BORN 1864
 PLACE Ulverston
 DIED 6.9.1961
 PLACE Reg. Ulverston

Rosella Margaret

BORN 1823
 PLACE Carmel
 DIED 1905
 PLACE Ulverston

CONT. ON CHART

CONT. ON CHART



Ancestral Chart

Chart No. _____

William Rawlinson

BORN
PLACE
MARRIED
PLACE
DIED
PLACE

Catherine Waldie
NAME OF SPOUSE

John Waldie
b 1795

BORN
PLACE
MARRIED
PLACE
DIED
PLACE

BORN
PLACE
DIED
PLACE

BORN
PLACE
MARRIED
PLACE
DIED
PLACE

BORN
PLACE
DIED
PLACE

BORN
PLACE
MARRIED
PLACE
DIED
PLACE

BORN
PLACE
DIED
PLACE

CONT. ON CHART _____

CONT. ON CHART _____

CONT. ON CHART _____

CONT. ON CHART _____

CONT. ON CHART _____

CONT. ON CHART _____

CONT. ON CHART _____

CONT. ON CHART _____