

# Waste Management in Ealing

June 2022

EALING COUNCIL



£ **CREATING**  
GOOD JOBS

 **TACKLING**  
THE CLIMATE CRISIS

 **FIGHTING**  
INEQUALITY

# The borough of Ealing

---

- Population of 340,000
- 137,000 households
- 9,000 businesses
- Third largest London borough in population
- Diverse communities



# Waste and recycling collections

- Ealing Council is a Waste Collection Authority (responsible for collecting the waste and recycling from households and businesses)
- Under the EPA 1990 we have a statutory duty to collect waste and recycling, including certain recyclable items (paper, cardboard, glass, cans, household plastics)
- Greener Ealing Limited, the Council's Local Authority Trading Company carry out collections from residents and businesses on the Council's behalf



# Waste disposal

---

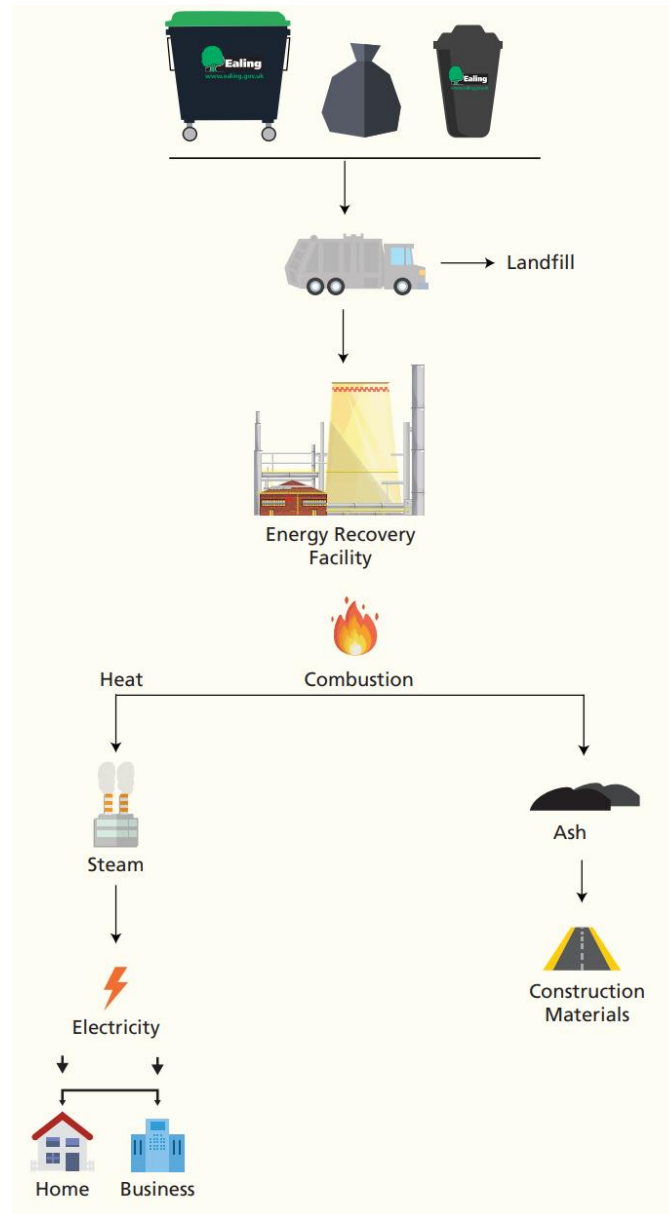
- West London Waste Authority is the statutory body responsible for waste disposal (the Waste Disposal Authority) for Ealing and the neighbouring boroughs of Brent, Harrow, Hillingdon, Hounslow and Richmond
- The WDA has the responsibility for the disposal contracts – what happens to the waste once it is collected (including residual waste, green waste, food waste)
- This is our single most expensive undertaking at approximately £10M per annum

## West London Waste

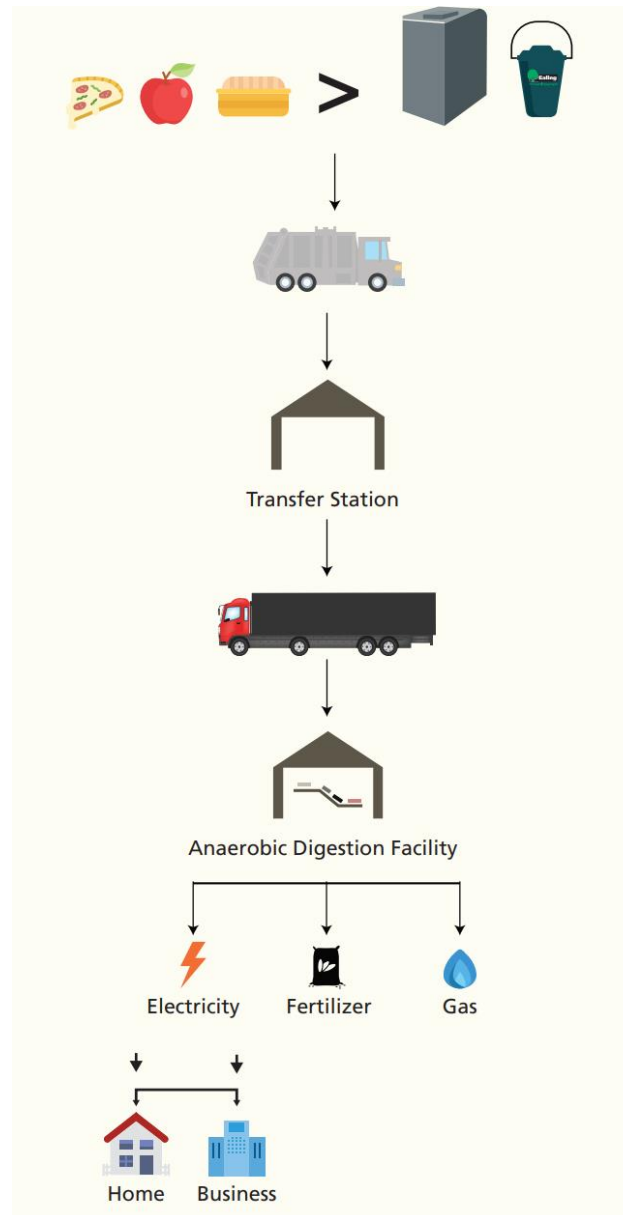
*Treating waste as a valuable resource*



# Residual waste disposal

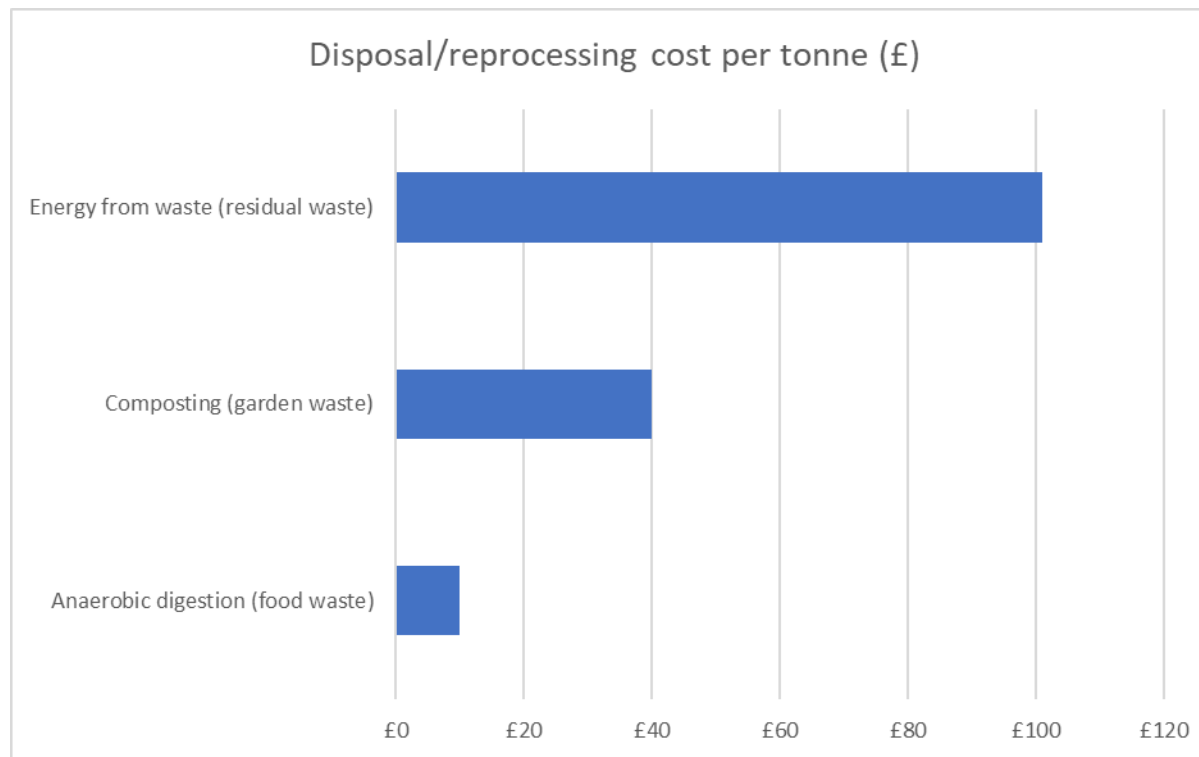


# Food waste reprocessing



# Waste disposal/reprocessing costs

- Waste disposal/reprocessing costs



# Recycling

---

- Recyclable items are usually handled by Councils or their Contractors
- Greener Ealing Limited holds contracts for the reprocessing of materials such as scrap metal and cardboard from the recycling centre
- The Council contract for the reprocessing of dry mixed recycling is approximately £1M per annum (in addition to the disposal costs through the WDA)
- The value of the recyclate material is used to offset the cost of the reprocessing – this is dependent on the market value of each commodity and varies each month



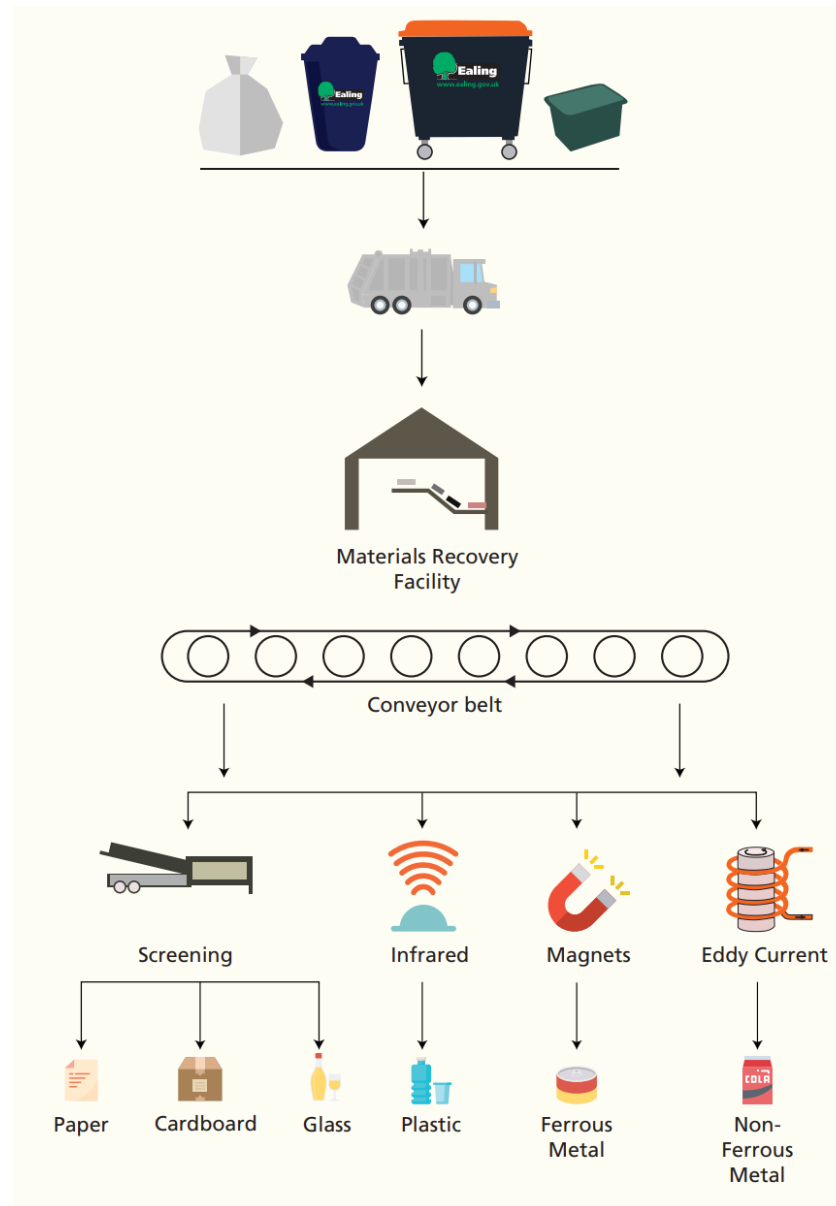


# What happens to the recycling?

- Dry mixed recycling (paper, cardboard, cartons, cans, glass, household plastics) is sent to a Materials Recycling Facility (MRF) for sorting and onward processing
- Currently Ealing's recycling is sent to a MRF in Kent
- [Lifting the lid on your recycling- Mixed recycling – YouTube](#) (video)

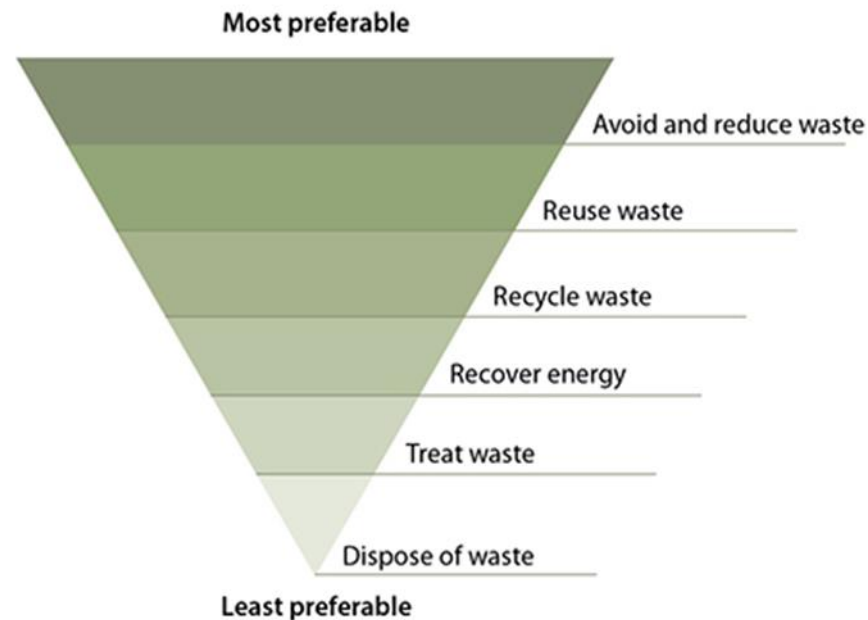


# Recycling reprocessing



# The waste hierarchy

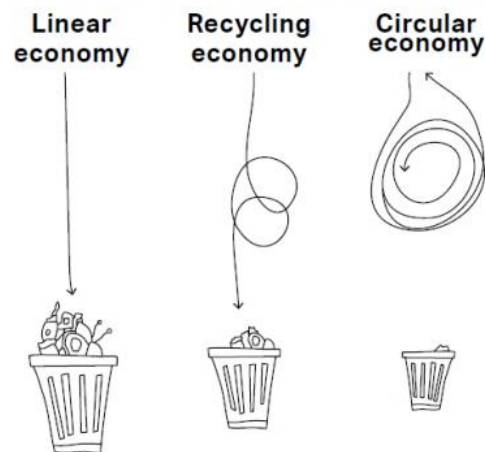
- It is important for financial and environmental reasons to encourage behaviours in line with the waste hierarchy
- Reduce, reuse, recycle



- Moving towards a circular economy approach

# Circular economy

- The circular economy offers an alternative to a linear or recycling economy approach and is based on the principles of designing out waste and pollution, keeping products and materials in use
- A circular system keeps the materials in use again and again through sharing, leasing, reusing, repairing, refurbishing and recycling – reducing waste to a minimum



FROM TAKE • MAKE • USE • DISCARD TO RE-MAKE • USE-AGAIN

# Waste strategy

---

- Encouraging behaviours in line with the waste hierarchy and circular economy
- Encouraging recycling, particularly food waste – current recycling rate is 47%
- Maintaining the quality of recycling (this impacts the sales price and reprocessing fee)
- Updating the Council's Reduction and Recycling Plan (RRP) as a requirement of the Mayor's London Environment Strategy
- Priorities:
  - Continue waste prevention and reuse activities
  - Encourage participation in recycling services
  - To increase food waste recycling from blocks of flats
  - To expand the business waste recycling offer
  - Ensure vehicles are ULEZ compliant, moving towards electric or biofuel

# Waste and recycling collection system

- Houses and house conversions – weekly collection of food waste, alternate weekly collection of recycling (blue wheelie bin) and rubbish (black wheelie bin)
- Flats – weekly collection of food waste, recycling and rubbish from communal bins
- Red routes/flats above shops – weekly collection of recycling (clear sack) and rubbish (black sack)
- Plus garden waste collection service (subscription)



# Household reuse and recycling centre

- The Council's household reuse and recycling centre (HRRC) in Greenford is where residents and businesses can take a range of materials for reuse, recycling or disposal
- Open all year round (apart from Christmas Day and Boxing Day)
- Recycle cardboard, garden waste, scrap metal, electrical items and many other items
- Reuse projects – bikes repaired, laptops refurbished, community paint scheme
- Please book an appointment to visit [Recycling centres and sites | Re-use and recycling centres and sites | Ealing Council](#)



# Greener Ealing Limited

Overall budget for Greener Ealing Limited is £22M

This is broken down as

- Waste Collections £10.1M
- Household Reuse Recycling Centre £1.1M
- Street Cleansing 5.5M
- Grounds Maintenance £5.3M



## Waste collections

which includes, Refuse, Recycling, Food waste, Garden waste & Commercial waste.

**There are on average 135,000 bins are emptied each week!**

Performance for waste collections is **99.96%** completed first time

All GEL vehicles are Euro 6 ULEZ compliant vehicles.

**HVO coming soon!**

GEL have 152 vehicles and 300 plant/ tools/ machinery to carry out service requirements.



# Greener Ealing Limited Street Cleansing

**Street Cleansing is carried out 365 days a year within in Ealing!**

Total KM break down of kilometres is below

- 12.62 km zone 1 08:00 – 20:00 seven days a week.
- 44.69 km zone 2 daily seven days a week
- 71.62 km zone 3 once a week
- 363.39 km zone 4 fortnightly
- 102.93 km zone 5 1/3
- 14.68 km zone 6 Industrial Streets

Street cleansing has two types of cleansing

- 1) Deep cleanse – This is the main sweep of a road along with removal of vegetation, litter, flytips etc. This happens every 12 weeks for residential streets.
- 2) Standard cleanse is the removal of litter, flytips etc.

is split into zones these are broken down into the following

- Zone 1 is major retail/ shopping locations such as Ealing Broadway/ Southall Broadway
- Zone 2 is secondary shopping locations such as the shops on The Avenue
- Zone 3,4 & 5 are all residential streets. They have three different frequencies of cleansing based on how fast they deteriorate for standard cleansing
- Zone 6 are industrial streets such as Trumpers Way in Hanwell

We are working with GEL to trial improved cleansing frequencies. A trial has been carried out in the Northfields ward & Acton Central, where the cleansing methodology was changed from a team to a solo operative.



# Greener Ealing Limited Grounds Maintenance

Grounds maintenance is a seasonal operation and has varied frequencies for the summer and winter periods

Deep cleansing of open spaces is upon request except the 23 Green Flag sites which are on a schedule

Grass cutting is mainly between March and September weather permitting grass is kept between length of 30mm-90mm

Visits to pond and watercourses as required

Litter removal is broken down into 8 standards each open space is given a standard of 1- 8. The standard depends on the frequency of litter removal required at the park or open spaces; this varies from twice per day in the summer periods to once every fourteen days in the winter period

## Green Flag Parks (23 awarded in Ealing)

- Acton Green Common
- Acton Park
- Blondin Park
- Bollo Brook Park
- Bramley Road Open Space
- Brent Lodge Park
- Churchfields
- Heathfield Gardens
- Islip Manor Park
- King George's Playing Field (Poor's Piece)
- Lammas Park
- Montpelier Park
- North Acton Playing Fields
- Northala Fields
- Pitshanger Park
- Ravenor Park
- Southall Manor House Grounds
- Southall Park
- Southfield Recreation Ground
- Spikesbridge Park
- Three Bridges Park
- Walpole Park London



# Greener Ealing Limited

---

What else do Greener Ealing do?

Apart from the stuff mentioned on the previous slides GEL also work with:

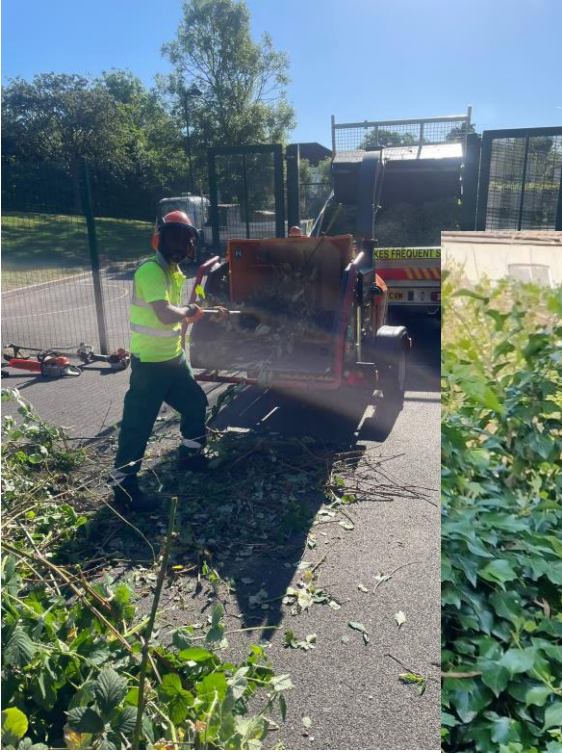
- LAGER CAN
- #OurSouthall
- Acton, Ealing and West Ealing BID.
  
- They provide tools and equipment for any volunteers who would like to get involved, these can be requested on the Ealing website [Community cleaning support request - Ealing Council](#)
  
- Engage with Schools, more recently with North Ealing Primary school to explain about open spaces and take part in a litter pick.

Up coming GEL activities

- Spring Clean, this is for locations throughout the borough that are not on normal schedules I.E unadopted or private land. This will start from WC 06.06.22 until the 20.06.22.



# Greener Ealing Limited



# Advice to residents

---

- Information about recycling in Ealing [www.ealing.gov.uk/recycling](http://www.ealing.gov.uk/recycling)
- General recycling advice [London Recycles](#)
- Love food hate waste [www.lovefoodhatewaste.com](http://www.lovefoodhatewaste.com)
- Textile reuse/recycling [Book a Free Collection - TRAIID](#)
- Sharing apps/sites such as:
  - Olio [OLIO – The #1 Free Sharing App \(olioex.com\)](#)
  - Too good to go [Join Our Food Waste Movement | Too Good To Go](#)
  - Freegle [Freegle - Don't throw it away, give it away! \(ilovefreegle.org\)](#)
  - Freecycle [Freecycle: Front Door](#)
- Ealing reduce, reuse and recycle Facebook group
- Ealing repair café [Ealing Repair Cafe – Part of Ealing Transition Initiative. Teaching clothes mending.](#)
- More about the circular economy [What is a circular economy? | Ellen MacArthur Foundation](#) and [Revolutionising our relationship with stuff - ReLondon](#)

# Questions?

