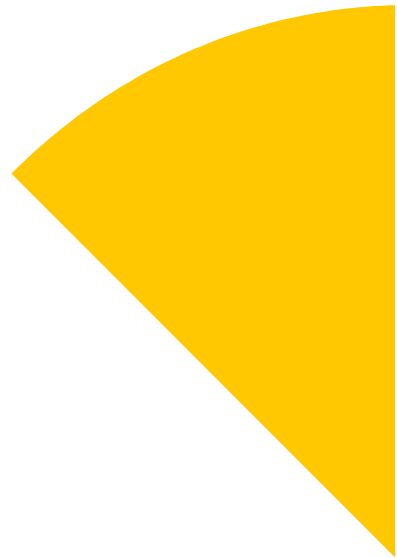
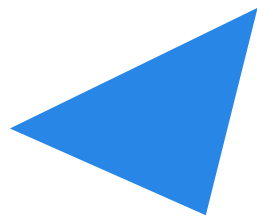


u3a

Ealing

PHOTOGRAPHIC COMPETITION 2023

SHADOWS AND REFLECTIONS



**SHADOWS
AND
REFLECTIONS**

1ST PRIZE



316
"Dunes, Namibia"
By Jenny Sturt



**SHADOWS
AND
REFLECTIONS**

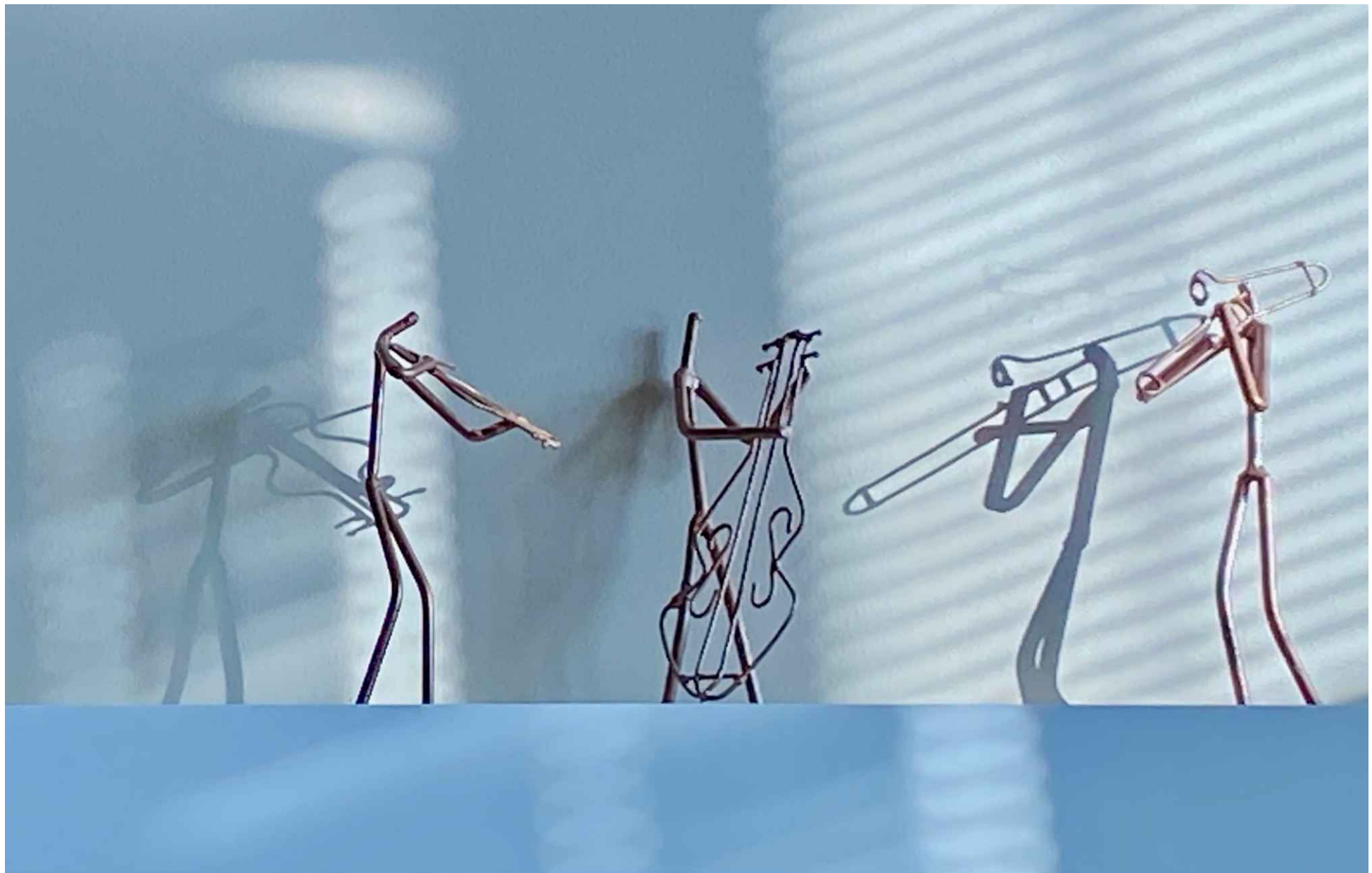
2ND PRIZE



363

"All that Jazz"

By Ann deBeaupré



**SHADOWS
AND
REFLECTIONS**

JOINT 3RD PRIZE



372

**“Shadows – Bordeaux”
By Maureen Spriggs**



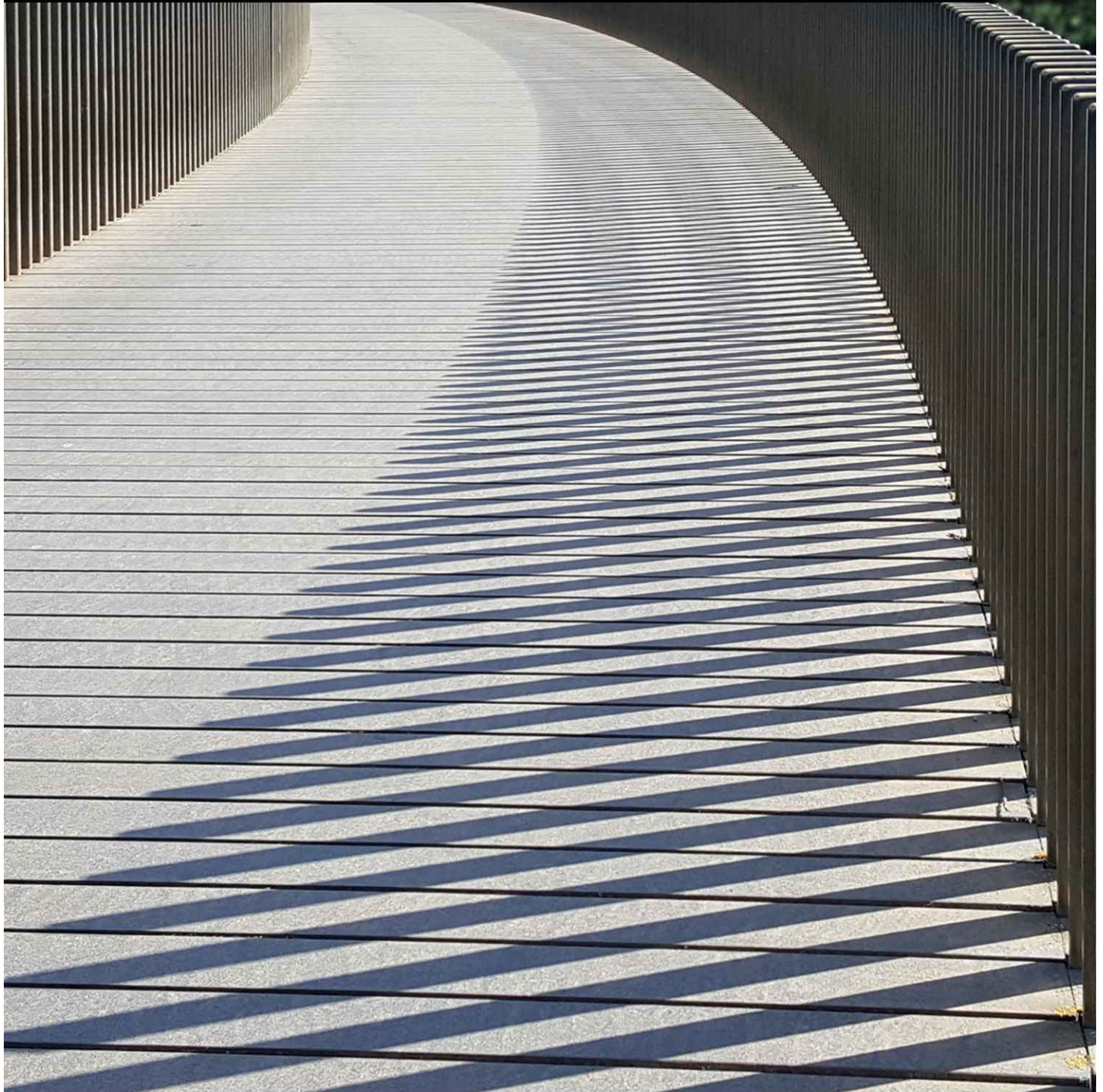
**SHADOWS
AND
REFLECTIONS**

JOINT 3RD PRIZE



395

**“Bridge of Shadows, Kew”
By Alan Donnithorne**



**SHADOWS
AND
REFLECTIONS
COMMENDED**



380

**“Tulip Reflection –
Ham House, Richmond”
By Andy Longfellow**



SHADOWS AND REFLECTIONS

COMMENDED



337
"Infinity Mirrors"
By Norma Fenton



SHADOWS AND REFLECTIONS

COMMENDED



317
"Wooden figures"
By Jenny Sturt



**SHADOWS
AND
REFLECTIONS**



306
"Egyptian Goose"
By Mike Perry

**SHADOWS
AND
REFLECTIONS**



307
"Tufted Grebes at Kew Bridge"
By Mike Perry

**SHADOWS
AND
REFLECTIONS**



310
“Lake Matheson”
By Linda Ward

**SHADOWS
AND
REFLECTIONS**



311
“Irish Reflections”
By Linda Ward

**SHADOWS
AND
REFLECTIONS**

326
"Musical shadows"
By Sally Pickles



SHADOWS AND REFLECTIONS

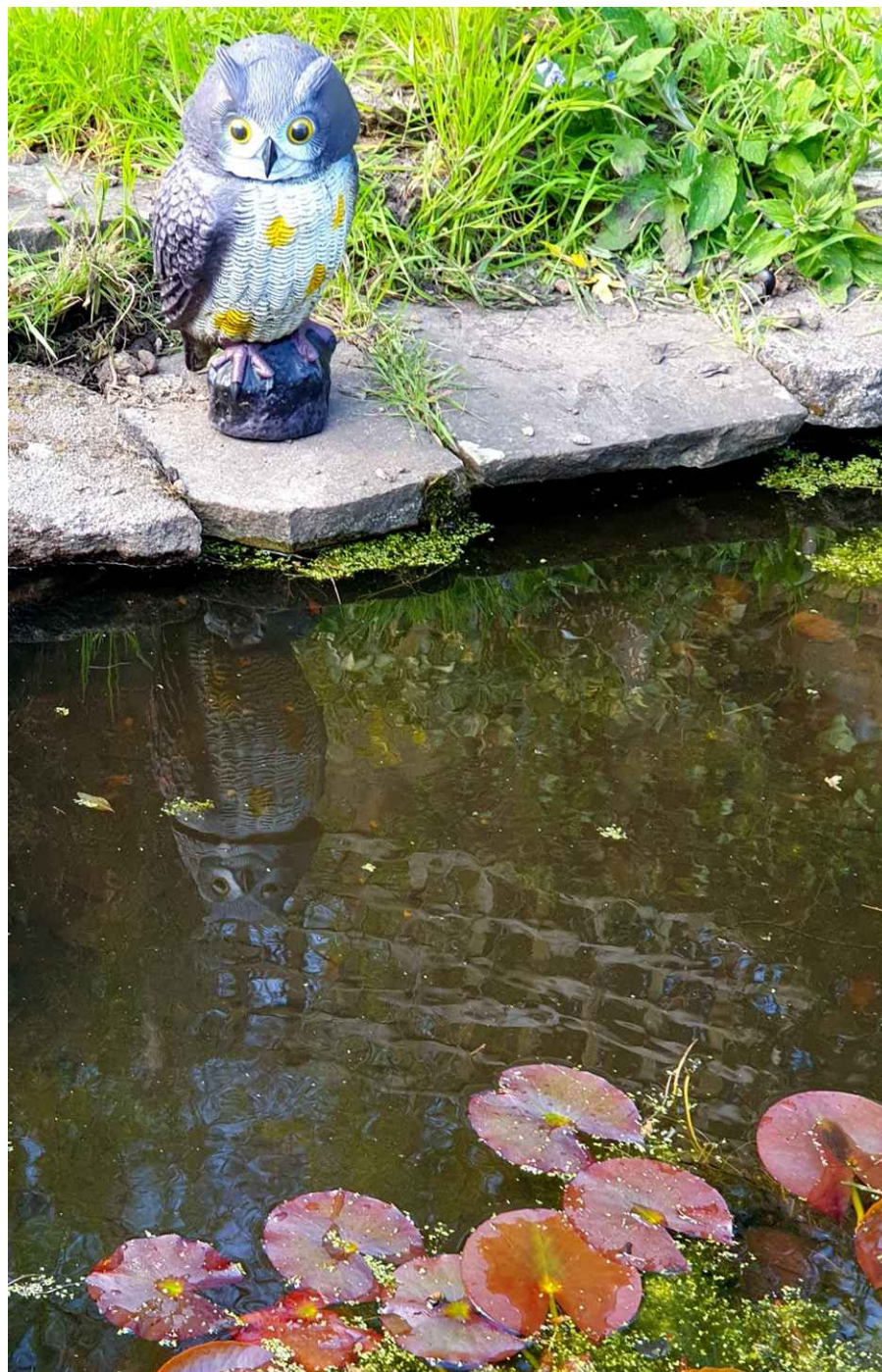
327

“A new view of the Shard”
By Sally Pickles



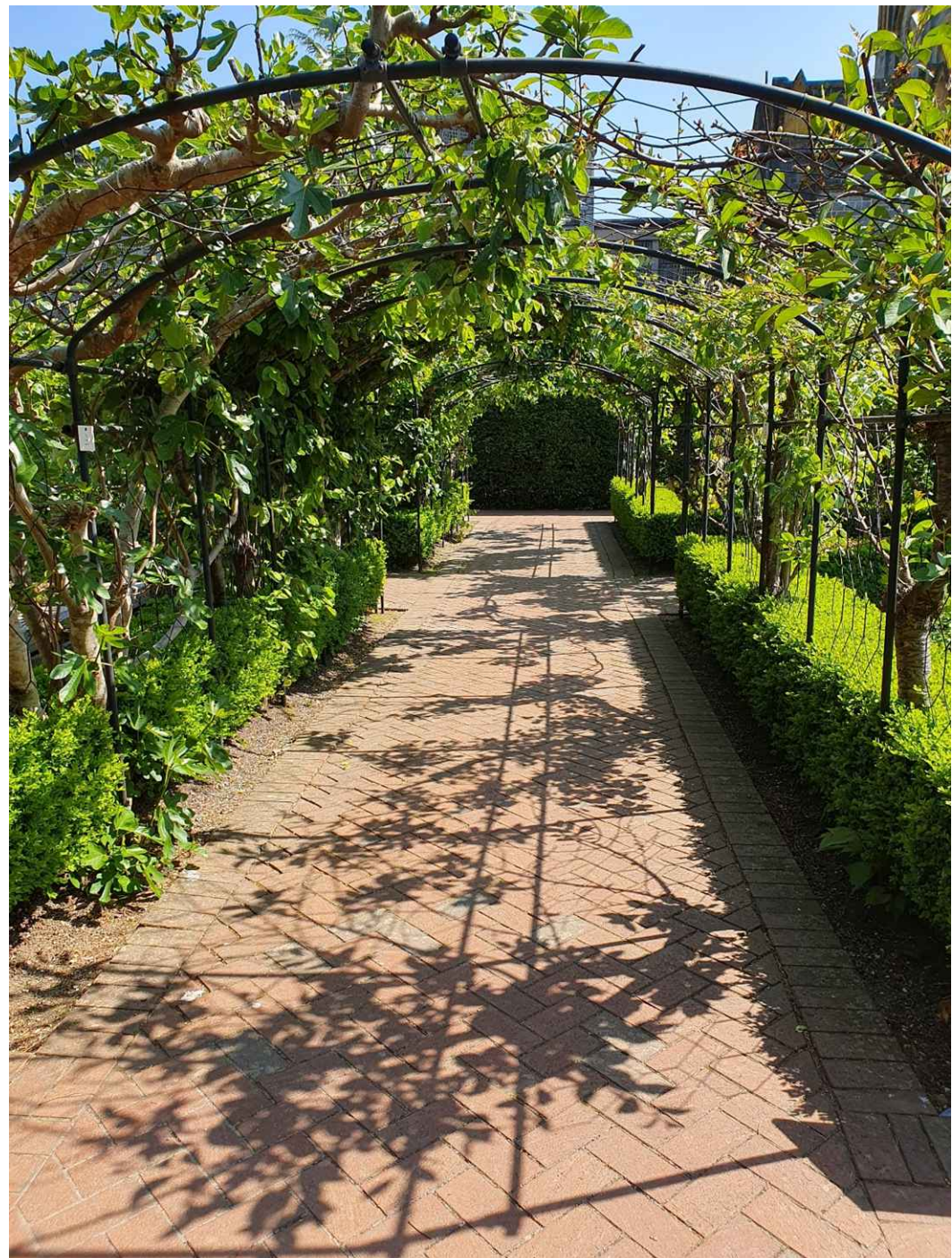
SHADOWS AND REFLECTIONS

334
"At the pond"
By Linda McDonald



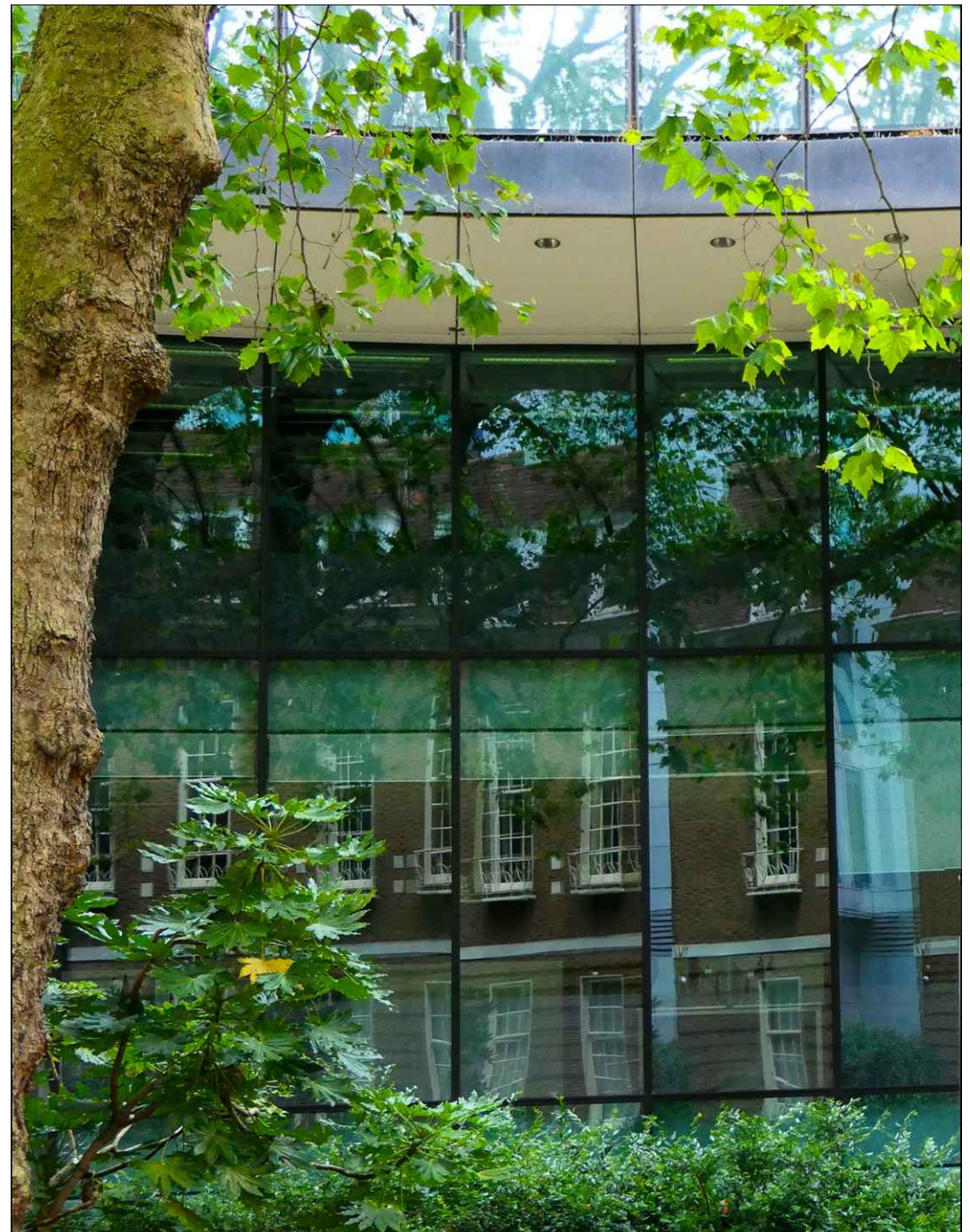
SHADOWS AND REFLECTIONS

335
“Buckfast Abbey, Physic Garden”
By Linda McDonald

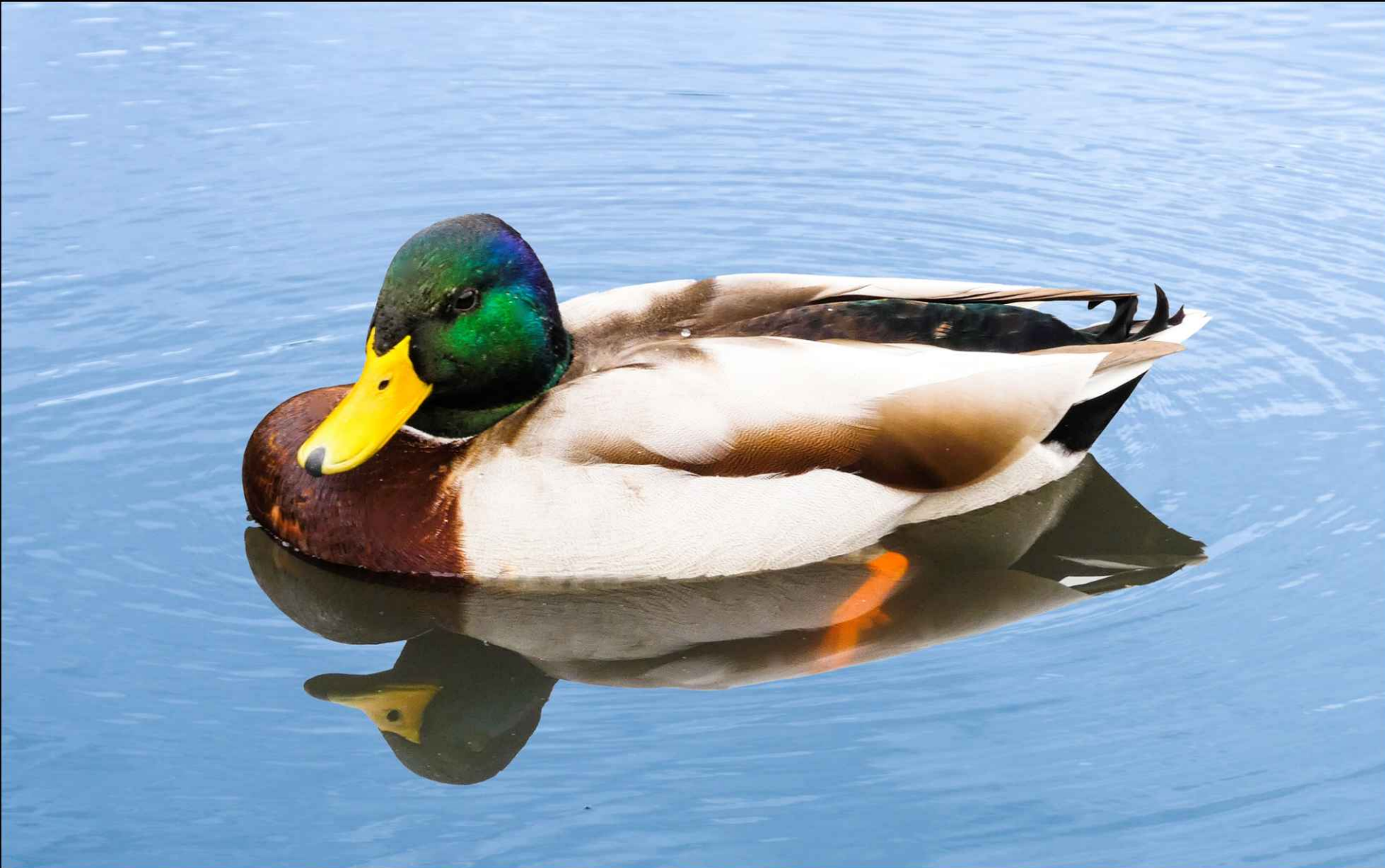


SHADOWS AND REFLECTIONS

346
"St Mary Staining Park Oat Lane EC2"
By Guinevere Lohneis



**SHADOWS
AND
REFLECTIONS**



347

**“Mallard enjoying the sun at
the London Wetland Centre”
By Guinevere Lohneis**

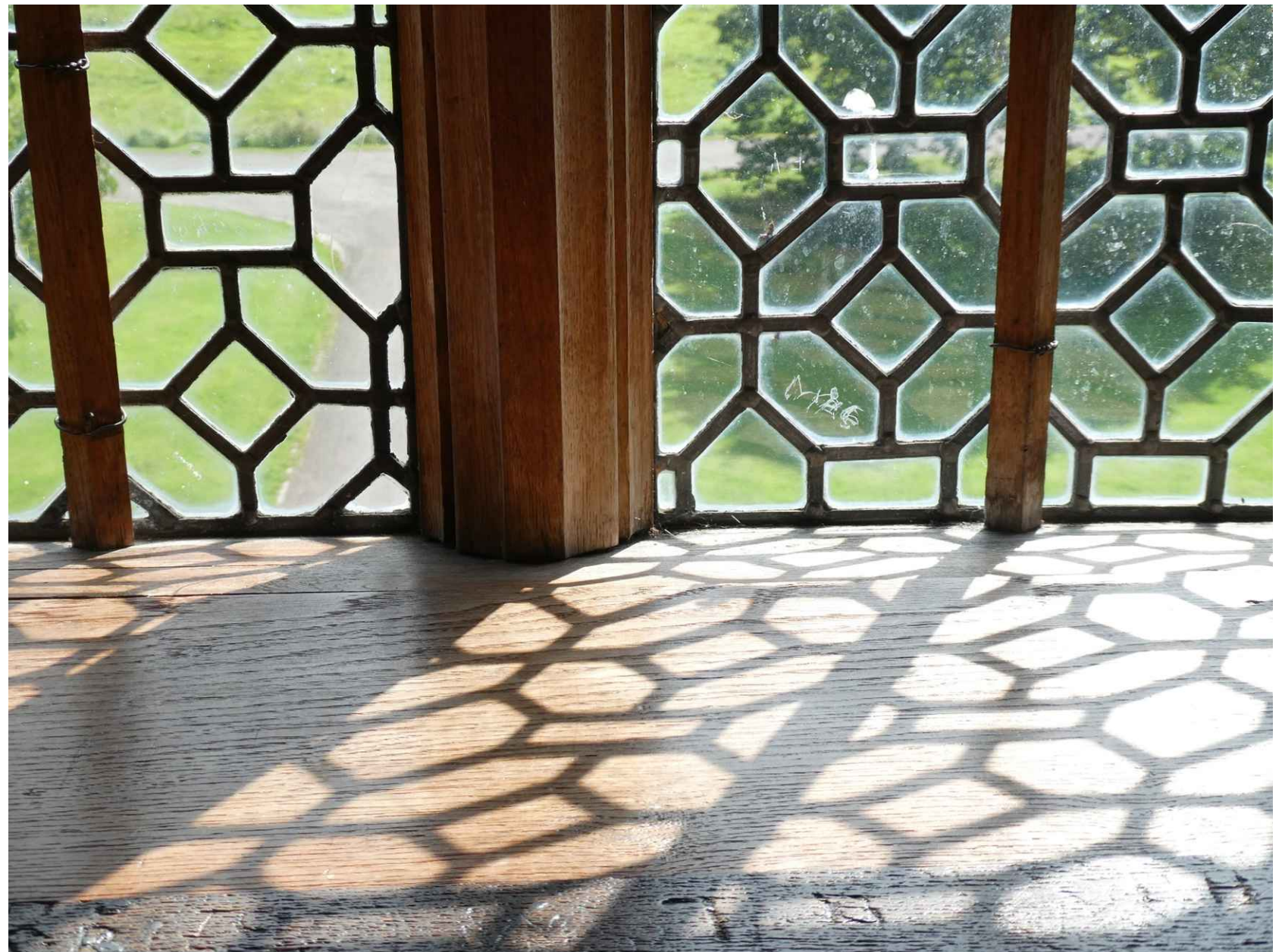
SHADOWS AND REFLECTIONS

348
"Cue Reflected, at Kew"
By Patricia Donnithorne



**SHADOWS
AND
REFLECTIONS**

**351
"Tudor Windows"
By Juliet Edwards**



SHADOWS AND REFLECTIONS

352
"Shadow Pathway"
By Juliet Edwards



SHADOWS AND REFLECTIONS

353

“What mysteries lie ahead?”

By Jane Emamooden



SHADOWS AND REFLECTIONS

354
"Trainspotters' Doubles?"
By Jane Emamooden



SHADOWS AND REFLECTIONS

358

“Reflection looking across the Thames
from Southbank in the night light”

By Beryl Dixon



SHADOWS AND REFLECTIONS

362
"A newly painted mirror"
By Beryl Dixon



SHADOWS AND REFLECTIONS

364
"Shadows after
the Storm"
By Ann deBeaupré



SHADOWS AND REFLECTIONS

371
"Reflections – St. Paul's"
By Maureen Spriggs



SHADOWS AND REFLECTIONS

379
"River Reflection –
Isleworth"
By Andy Longfellow



SHADOWS AND REFLECTIONS

389
"Magical Moat"
By Zonia Goodall



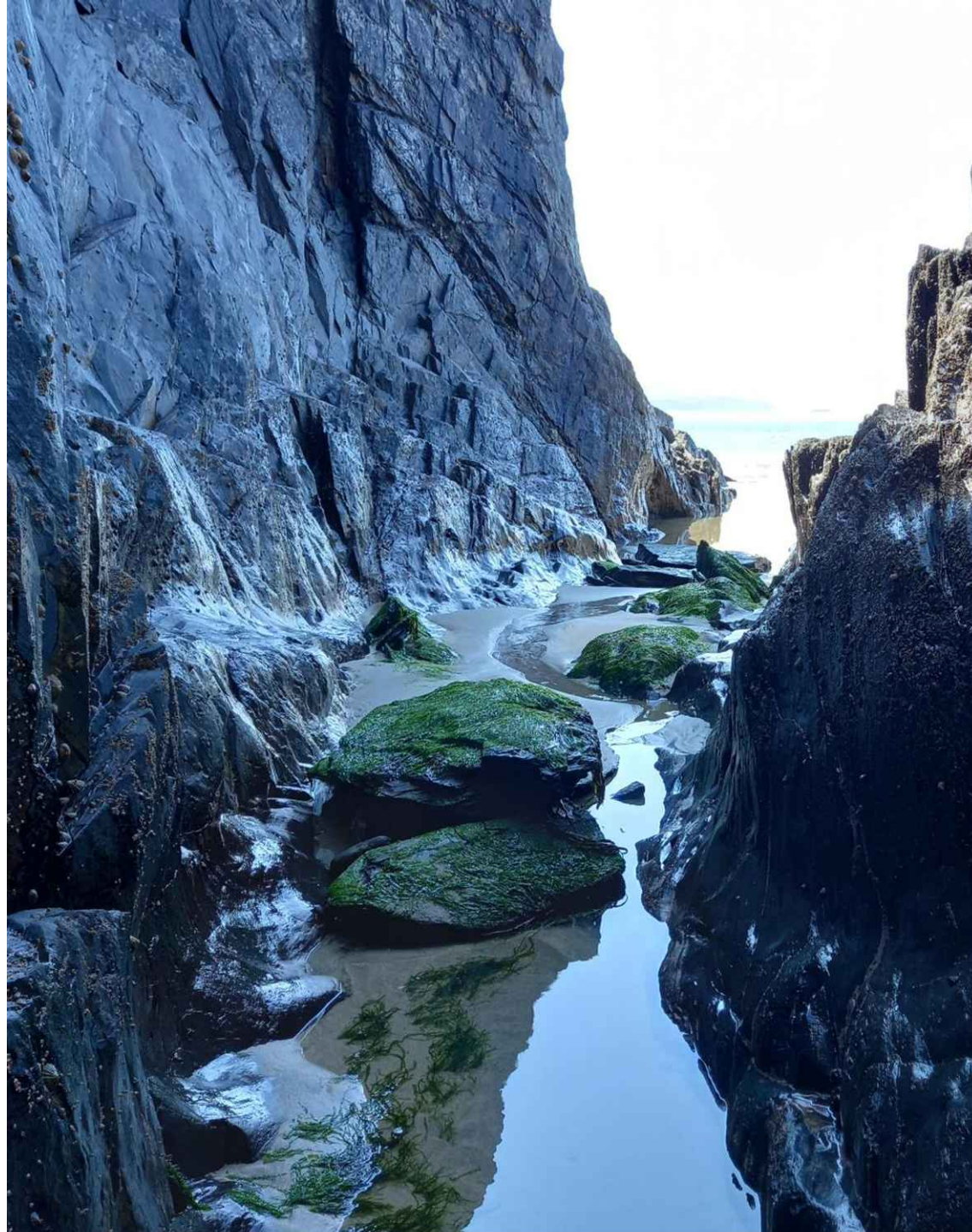
SHADOWS AND REFLECTIONS

390
"A Walk on the Beach"
By Zonia Goodall



**SHADOWS
AND
REFLECTIONS**

**393
"Ravine"
By Sylvia Stirling**



**SHADOWS
AND
REFLECTIONS**

394
“Sailors’ Delight”
By Sylvia Stirling

