

A warm welcome to all these new members:

Susan Ackrill	Margaret Townsend	Paul Mobey
Keith Young	Dorothy Todd	Sue Mobey
Ruth Morgan	Iona Morgan	Lyn Cole
Angela Patterson	Debra Leech	Geoffrey Stollard
Rowena Johnson	David Eveson	Yvonne Stollard
Heather Hewlett	Barbara Eveson	Neil Pope
Dugald Holloway	Jan Baines	Nichola Pope
Roslyn Barrett	Jeanette Rees	Lynne Pemberton
Cheryl Walton	Gerard Van Zwieten	Alan Bishop
Lin Reilly	Jan Van Zwieten	Peter Harrod
Peter Reilly	Patricia Foulkes	Donna Harrod
Alan Lane	Peter Coward	Doreen Rands
		Dick Rands



WOW – what an afternoon!

The first thing to say is an enormous 'Thank you' to all members; our success is down to you the group leaders, volunteers in the refreshment area and all members who attended and brought prospective new members. The organising committee couldn't have done it without you.

Ten years and a bit since we started Droitwich u3a and look how far we have come. On that first meeting at the Community Hall in July 2012 there were some 150 people queuing up down the road to get in and sign up. On Monday, 3rd October, once again there were queues at times trying to get in and get a membership form from Pam, our membership secretary – not quite along the road, but certainly filling the vestibule area. The buzz and the excitement, however, were very similar to that inaugural meeting. Today we can boast some 450+ members and that number is due to go up when all new forms have been logged – some 30+ new members have already signed up.

It was wonderful to see the enthusiasm of so many of our group leaders and a lot of their members, showing off what they do in their groups. The good thing is that the variety of groups may change over time but with new members come different interests and new groups will emerge. But the one overarching success is the number of friendships which have been formed during these ten years - it was lovely to catch up with people again.

It was a rare opportunity to try something different - the samba drumming where Nick made it so easy to join in and be making music before you knew it while Chris, willow weaving, had you believing it was easy to make some attractive objects to grace the home or garden even for those with less dextrous fingers. They both had endless supplies of patience to ensure members achieved success. Sheila provided a stunning display of beads and items she had crafted, I don't think I have seen so many beads outside the bead shops you find abroad and even then I think she wouldn't be found wanting. Now I for one would happily join any of these activities if we had a group – fancy volunteering to lead a group?

Again we can only say a **BIG BIG THANK YOU** to all our members and to all those who made Monday such a success. If you missed it be sure to come to the next one.

Val Hawley & Gay Enoch

Existing Groups' Update



Canasta Group.

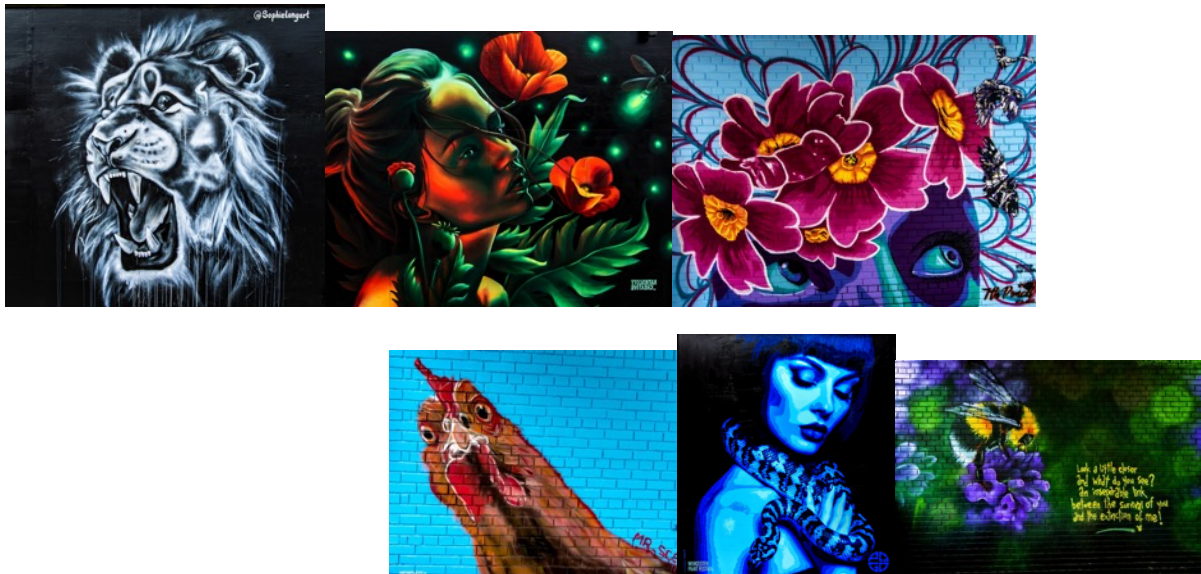
My current canasta group is oversubscribed but I don't have enough people on the waiting list to make a second group viable. If you would like to play this card game, then please let me know. It is a game based on Rummy but with rather more to think about, making for more interesting game play. It is not, however, a difficult game to learn and an afternoon session would be enough to get you up and running (unlike Bridge!). I am happy to teach anyone who hasn't played before, or who might welcome a refresher course, having not played for some time. Further information can be found on our u3a website on the 'Canasta' page of the 'Groups' tab and the rules of the game that we use can be found by clicking the 'Canasta Rules' link on the top right of the Canasta page.

We meet at the Castle pub and would be gathering on the first and third Monday afternoon of the month from 2pm to 4pm. The pub kindly lets us play free-of-charge but we do ask every player to buy at least one drink during the afternoon.

If you would like to 'sign up' or would like further information, please email me at shawley316@btinternet.com, or you can click the envelope icon on the web page.

Steve Hawley

Digital Photography Group. Pictures from a recent visit to Worcester to cover the Worcester Paint Festival. Although this street art is distributed around a wide area of the city we concentrated on the area around Crowngate, Angel Street, Deansway and Broad street.



Pictures from a recent visit to Gloucester Cathedral, also by the Photography Group.



Built by Abbot Serlo, the foundation of stone of the Abbey of St Peter (now Gloucester Cathedral) was laid in 1089, the East End was dedicated in 1100 and by c.1130 the Nave was completed. A great deal of the Romanesque church survives, including the entire Crypt, much of the East End, the great Nave pillars and the Norman Chapter House. The Cloister of Gloucester Cathedral represents some of the most significant medieval architecture in the world, famed for its remarkable fan-vaulting. This imaginative new style was

developed here during the 1350s, and the current Cloister was finished by Abbot Froucester by 1412. Originally built to house the monks, it provided a space for them to live, work and meditate. On the South Walk of the Cloister, you'll find a row of 20 niche-like spaces; these are called 'carrels', and they would have originally housed desks for the monks to study at. Wander along the North Walk and you'll see the 'Lavatorium', a place for the monks to wash which would have made use of a local stream.



Fast forward to the 21st century, and the Cloister has taken on another life as a popular filming location – look out for it in productions such as *The Hollow Crown*, *Wolf Hall*, *Father Brown*, *Mary Queen of Scots*, *The Spanish Princess*, and, perhaps most notably, a number of the *Harry Potter* films. It's for this reason that this part of the Cathedral is fondly referred to as 'Hogwarts' by many visitors.



The group recently visited the Kidderminster station operated by the Severn Valley Railway, a heritage line which runs from Kidderminster to Bridgnorth. The station was opened on 30 July 1984, was built in a late Victorian style, and shares its station approach and car park with the adjacent National Rail station.



Shortly after we arrived the Locomotive "Taw Valley" pulled into the station. It had originally been painted in Brunswick Green but was repainted purple and decorated to celebrate the 70 years of the



Queen's Jubilee. When the Queen died the Jubilee details were taken off and the original number put back on. Eventually it will be repainted again to its original colour of Brunswick Green



There are vacancies for new members in the Photography Group – please contact Derek Oakley via the website



For the last visit of the year the *visit Gardens Group* visited Brockamin gardens on the edge of Malvern Hills. This is a plant specialists 1½ acre informal working garden, parts of which are used for plant production rather than for show. Situated next to common land. Mixed borders with wide variety of hardy perennials where plants are allowed to self-seed.

Climate Change and the Environment. We are a new group just approaching our third meeting and finding our feet. We plan to build a forum where, with discussion and presentation, we can understand the implications of the continued and accelerated use of our planets resources. What might the future look like for the human race and all the other species that inhabit this 'Third Rock from the Sun'?

Our next meeting is the morning of Tuesday 22nd November when Hydrogen a fuel for the future is up for discussion. This is quite a far-ranging subject and reaches down to our personal lives when heating our homes using natural gas is eventually banned.

We welcome new members to our regular meetings on the 4th Tuesday of each month. Bring along an enquiring mind and questions, expertise not needed but very much valued.

Contact me, John Everard, via the U3A web site or using everardsimpson@hotmail.com

Accessing Groups. Fancy something different? Seen or heard about a group that you would like to join? If you have access to the internet your first point of call should be the Group page on our u3a website., [Droitwich U3A: Home \(u3asites.org.uk\)](http://Droitwich U3A: Home (u3asites.org.uk)) . Here you will find the envelope icon at the top right hand corner of the page which will allow you to contact the group leader directly.

For those who do not have access to the internet you will find an up-to-date list of groups available to members in this newsletter. Phone me, number below, and I will forward your interest to the group leader who will then contact you directly. Be warned, popular groups may have a waiting list, some longer than other others. Impatient – can't wait? You will not be alone if there is a waiting list. Please do think about starting a new group. It is not as difficult as you may think and there is lots of help and advice available from how you might run the group, when and where.

New groups are continuously in the process of being formed; often the need is for a member to lead the group or more members to make them viable. Please do get in touch if you interested in any of these. If you talk to any group leader they will tell you that it is not difficult to run their group it becomes just like arranging the next meeting between friends. In the unlikely event of difficulties there is help available from the Group Co-ordinator or other members of the committee. For more information please do get in contact with me either through the Contacts page on the website or directly on 01905 778743.

Gay Enoch – Groups Co-ordinator

Proposed New Groups

Group	
Poker	Play poker for fun in the winter evenings. Leader needed.
Sunday Brunch	Sample a wide variety of suitable venues in and around Worcestershire for a sociable Sunday meal. Vacancies. Leader needed.
Customs and Folklore Around the World	A new idea for a group - expressions of interest from members needed.

The following groups have formerly been active but need more people to join and/or new leaders to become viable again.

Ancient Worlds	Astronomy	Chess	Current Affairs
Military History	Philosophical Discussion		Hand Bell Ringing

Please contact Gay Enoch through the website or on 01905 778743 if you :

- a) would like to put your name down for any of these activities
- b) need more information
- c) would like to propose, and lead additional activity groups
- d) would like to become a volunteer leader/co-ordinator for any of the groups listed above.

Existing Groups

All existing groups can be accessed through our website: [Droitwich U3A: Home \(u3asites.org.uk\)](http://Droitwich U3A: Home (u3asites.org.uk)) . Go to the Group page, click on the group you are interested in to find further information. To contact the group leader use the envelope icon at the top right corner of the page.

Group	Meets	Time	Where
Art Appreciation	1 st Friday	2.30pm	Members' home
Book Reading	4 th Thursday	2.30pm	Members' home
Bridge Beginners	Tba		Members' home
Bridge Duplicate Club	Every Wednesday	1.30pm	Amphlett House
Bridge Revision	Every Wednesday	10.00am	Working Men's Club
Bridge Rubber	Every Tuesday	2.00pm	The Castle
Canasta	2 nd & 4 th Monday	2.00pm	The Castle
Classic Poetry & Literature	3 rd Thursday	2.00pm	Members' home
Classical Music Appreciation	4 th Thursday	10.30am	Members' home
Climate Change & the Environment	4 th Tuesday	10.30am	Members' home
Coffee & Chat	2 nd Monday	10.30am	Members' home

Computers Beginners	By Arrangement		Members' home
Conversational Psychology	4 th Wednesday	10.00am	Rotary House
Cycling for Pleasure	1 st Sunday	10.30am	Various
Digital Photography	2 nd & 4 th Tuesday	10.00 a.m.	Various
Exploring English Language	2 nd Tuesday	10.30 a.m.	Members' home
French Conversation	Every Wednesday	10.30 a.m.	Members' home
French Improvers	Every Monday	10.30 a.m.	Members' home
Garden Visits	Monthly Wednesdays	April - September	Various
Genealogy	3 rd Tuesday	10.00 a.m.	Droitwich Library
German Beginners	2 nd & 4 th Mondays	10.00 a.m.	Members' home
German Continuers	2 nd & 4 th Tuesdays	10.00 a.m.	Members' home
Growers	3 rd Thursday – not winter	2.15 p.m.	Members' home or allotment
History local	2 nd Friday	10.00 a.m.	Rotary House
Italian for Beginners	1 st & 3 rd Tuesdays	2.30 p.m.	Members' home
Italian Improvers	Every Tuesday	2.30 p.m.	Members' home
Lunch Club - Friday	1 st Friday	12.30 p.m.	Various
Lunch Club - Tuesday	2 nd Tuesday	12.30 p.m.	Various
Mah Jong	1 st Wednesday	2.00 p.m.	Members' home
Maths, Science & Technology	3 rd Friday – not summer	10.00 a.m.	Rotary House
Meditation	Every Wednesday	a.m.	Members' home
Modern Board Games	2 nd & 4 th Fridays – not summer	2.00 p.m.	Amphlett House
Petanque 1	Every Friday	11.00 a.m.	Gaudet Luce Golf Club
Petanque 2	Every Friday	2.00 p.m.	Gaudet Luce Golf Club
Petanque 3	Every Tuesday	1.30 p.m.	Gaudet luce Golf Club
Play Reading	3 rd Wednesday	2.30 p.m.	Members' home
Psychology of Everyday Life	1 st Thursday	2.30 p.m.	The Old Cock Inn
Quiz Team	Various	p.m.	Various
Scrabble	Every Thursday	12.00 p.m.	The Castle
Singing for Pleasure	Wednesday, 2 nd & 4 th	2.00 p.m.	Baptist Church Hall
Spanish Beginners	Wednesday -	2.30 p.m.	The Old Cock Inn

	2 nd & 4 th		
Spanish Improvers	Wednesday - 1 st & 3 rd	2.30 p.m.	The Old Cock Inn
Table Tennis	Every Thursday	2.00 p.m.	Droitwich Leisure Centre
Wacky Watercolours	2 nd 4 th Tuesdays	10.00 a.m.	Member's Home
Walking	Thursday 2 nd & 4 th summer, 2 nd winter	10.00 a.m.	Various
Wind Instrument Playing	Monday - 1 st & 3 rd	3.00 p.m.	Crowle Platinum Hall
Wine Appreciation	Wednesday bi- monthly	7.00 p.m.	Rotary House

Group Leaders Just a gentle reminder that it would be helpful to members on waiting lists if you could periodically check your list of current members and remove those from your list you have not attended for several sessions unless they have specifically asked to be kept on your list. You would then be able to accommodate members on your waiting list. It is very frustrating for members held on waiting lists not to know when they may be able to join your group but if you update your current list from time to time you can then advise them if/when they can then join your group. If you have a long waiting list that contains enough names, (6+), to make another group viable please do contact me and I will endeavour to make it happen. The u3a ethos is that we should not hold waiting lists but start new groups – easier said than done, I know.

Gay Enoch - Groups Co-ordinator

Hope you've enjoyed this edition of the newsletter – a little later than usual but I have a good excuse (holiday)! As you will have seen, there's been an encouraging update from some of the existing groups. It does help to let new members see what's happening within the various groups, particularly as so many have recently signed up! The Open Afternoon obviously proved really successful – it was certainly great to see so many people there checking out the various groups. I think the delicious home-made cakes on offer with tea and coffee were popular. Congratulations to Mike Bracey for winning the cake competition.

The talk by Andrew Pedrick at last month's meeting was very interesting and he passed on some very useful tips for autumn gardening. This month's talk also sounds fascinating! Forthcoming calendar dates are below.

Finally, the usual plea: PLEASE send in any updates or articles for the newsletter to the editor via the website – *the next edition will be published in January 2023-* deadline **Monday 9th January.**

Editor



Calendar dates

General Monthly meetings at the Norbury Theatre
2.30 - 3.30

Monday 21st November - Confessions of a Swarm Collector by Alison Wakeman

Friday 18th November - Maths, Science & Technology group: My career as a veterinary scientist by Mike Ansfield at Rotary House, 10am - all members welcome

Monday 12th December - Christmas Meal at The Pear Tree, Smite
(no monthly meeting in December)

Friday 16th December - M S & T group: The geology of the Malvern Hills by John Payne

