

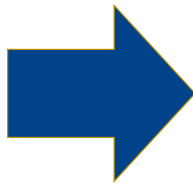
**u3a** Beacon

# Beacon

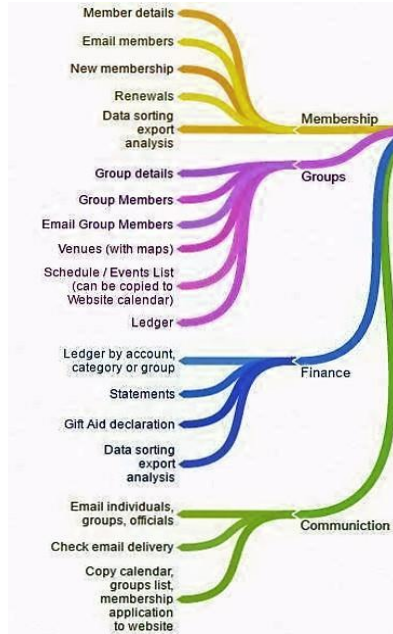
Before, During and After

## So – what is Beacon?

- An online membership management system



- You will need a computer and internet access



# Beacon

– can do all of this for you in an easily managed way that anyone can use.

# Beacon

– provides a safe, secure and easily manageable place to store all your data.

# Beacon can and will

- make your life easier
  - allow you to manage your time better
  - let you do jobs more quickly and efficiently
  - let you keep all your data up to date
  - give ready access to your data
  - help you to be compliant with GDPR
  - and/but (depending on how you feel!)
- 
- *it will change the way you work.*



### Administration

Demonstration Access: [To register as a new user, click here](#)

U3A

Username

Password

Passwords are case sensitive

☒ This is a private computer - tick to store local settings

If this is a public or shared computer, do NOT tick the checkbox and ensure that you log out when finished

Forgotten your username or password? [Click here.](#)

Beacon is an online website at  
[www.u3abeacon.org.uk](http://www.u3abeacon.org.uk)

# What do you need?

You will need one person to administer the site.

They will have access to every part of the site

They will manage the individual access and permissions of users in line with committee decisions.

In time they might become the trainer and teacher for other users.



## Before, During and After

- The Beacon Team has a range of support that we can provide
- A supporter to give personal help, advice and guidance
- Your own u3a's practice site called Demo22
- The online User Guide
- The Help Desk – to provide answers to almost anything
- The Beacon Forum
- Regular live Zoom courses for the main users

# Benefits of Beacon

- Always (and only) available to authorised users
- Security for your records
- No duplication of data
- Simple operation
- Reduced workload for officers
- Continuity when officers change





# Using Beacon

• If you would like to start the Beacon journey  
please contact:

• [info@beacon.u3a.org.uk](mailto:info@beacon.u3a.org.uk)

