

02 SEEING OBJECTS DIFFERENTLY

From the three suggestion identify what is portrayed in the picture ?



1.

- A. Painted hatch markings on a tarmac road.
- B. The X key on a computer keyboard.
- C. A section of the symbolic "Black Lives Matters" Texas flag.



2.

- A. Pages of a book.
- B. Tassels on the edge of a woollen blanket.
- C. The pile of a carpet.



3.

- A. Breakfast cereal in a bowl.
- B. A drainage pipe blocked with old vegetable matter.
- C. The end of a cigarette.



4.

- A. Beads of polystyrene washed up on a beach.
- B. Sea ice balls formed by wave action.
- C. A beach made up of quartz peddles.



5.

- A. Cross section of a cactus stem.
- B. Misshapen ornamental wall tile.
- C. A high tensile concrete post.



6.

- A. A selection of savoury dips.
- B. Paint pigments.
- C. Various golf balls cut in half.



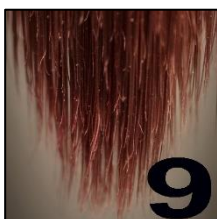
7.

- A. Central hall at the Guggenheim Art Museum, Manhattan,
- B. The inside of a guitar.
- C. Looking down inside a new bird box.



8.

- A. A piece of celebration rock for the Queen's platinum jubilee.
- B. Cross section of a tube for a paint mixing machine.
- C. Cross section of a tube of toothpaste.



9.

- A. An artist's paint brush.
- B. A pony's tail.
- C. A David Bowie neck hair style.



10.

- A. The internal workings for the ball return on a pool table.
- B. An old device for sending cash in containers between the cashier and an assistant.
- C. An egg collector in a poultry shed.



11.

- A. An unusual fungal spore growth in milk.
- B. A spring protruding from an old mattress.
- C. A space rocket emerging from cloud.



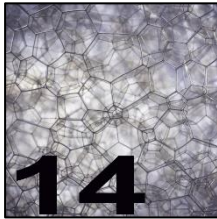
12.

- A. Jeweller's scales.
- B. Attaché brief case digital security lock.
- C. A self-weighing suitcase.



13.

- A. The internal workings of an atomic wristwatch.
- B. Inside of a pyrotechnic firework.
- C. A timing device for delivering food to pet animals.



14.

- A. Soap foam.
- B. Contained capsules of air for kayak buoyancy.
- C. Cuckoo spit, protective plant sap foam produced by a frog hopper insect.



15.

- A. Kennels.
- B. A laundrette.
- C. The multiple rear workings of a skittle alley.



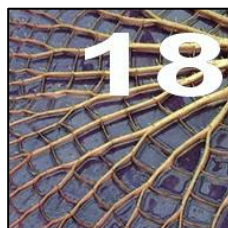
16.

- A. The outside layer of a Mukluk, an Arctic Inuit insulated traditional boot.
- B. Cross section of a crash mat.
- C. Penguin's feathers.



17.

- A. A steel scouring pad.
- B. Metal swarf off a lathe.
- C. An interlocking, unsolved metal puzzle.



18.

- A. Irrigated rice paddy fields.
- B. The underside of a water lily leaf.
- C. Support structure for a heavy glass roof.