

The Photography Group (Kevin Lucas)

For our May outing, a group of fifteen keen photographers enjoyed a riverside walk "East of Tower Bridge". Originally billed as a Riverside Pub Walk the route was expanded to encompass more of the Thames Path, south then north of the River.

Starting from Tower Hill tube station we crossed Tower Bridge and turned east along Butlers Wharf and followed the Thames Path to Rotherhithe passing the Angel and The Mayflower pubs. From here we took the Overground Line under the Thames (bizarre I know!) to Wapping where we continued our walk eastwards towards The Prospect of Whitby. Possibly one of the most famous pubs in London, it dates from 1543 and has a hangman's noose swinging over the river. This is a nod to Judge Jeffreys also known as the "Hanging Judge", one of the more notorious customers of the pub during the late 1600's.

We retraced our steps back toward Wapping where we stopped for an enjoyable lunch at the Captain Kidd before heading back to Tower Hill via St Katharine Docks.

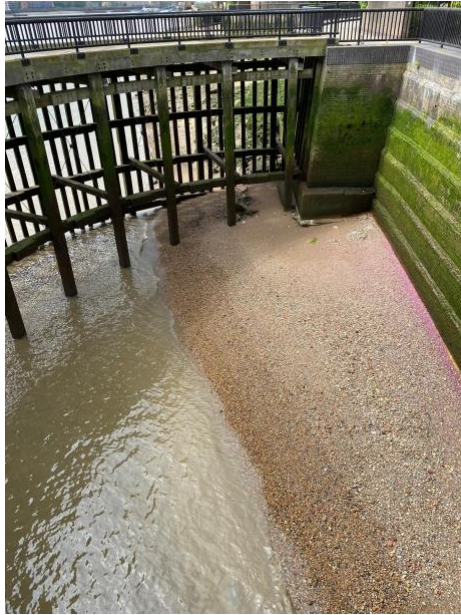


The Group

The weather had been forecast to be sunny and clear but, in the end, turned out rather overcast. Here is a selection of photos taken by the Group.



Geoff James



Cheryl Macnair (with a guest appearance from Colin Macnair)



Rose Eckhard

Noel T



Sam Blitz



Pauline Leadley



Stephen Harriman



Anne Harriman



Tony Bird



Janet Gray



Vivienne Danzey



Kevin Lucas

Our next outing is planned for Thursday 22nd June and will be a circular walk around Hainault Forest Country Park, starting at, and more importantly finishing at, The Two Brewers, Chigwell Row.

To join the Photography Group, no special expertise or equipment is normally required and members with no interest in photography are welcome to join us purely for the outings. We have visited some very interesting locations in London.