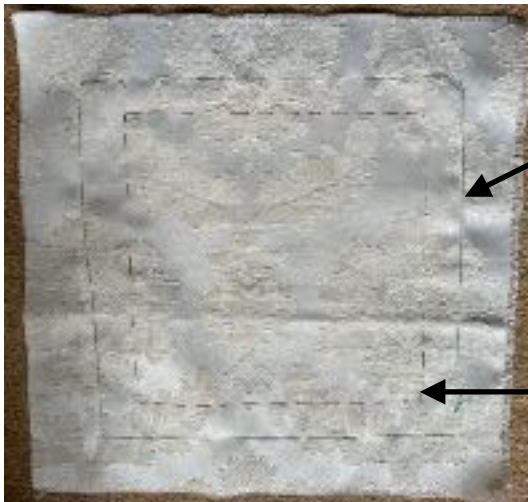


## Stitch Sampler Page

1. Cut a piece of fabric 25x25cm (10x10 inches).
2. Cut a second piece of lighter, cheaper backing fabric 20x20cm (8x8inches).
3. *['Backing' is a sheet of material that is hooped and embroidered along with the fabric you're embroidering. This material acts as a stabiliser, supporting the fabric and stitches during the embroidery process.]*



4.If you are **not** going to use a hoop you will need to attach the two together either using tacking stitches or long machine stitches.

5.You need to mark a 15x15cm square (6x6inches) on the embroidery fabric. This is the area that you will be working in. You can mark it with tacking thread, removable fabric marker or pencil.

6. It is best to choose a colour scheme. If we all choose the same we can maybe share threads. For 'A' I have chosen blue.

7. Start with a patterned fabric. You will be using the colours on this fabric as a basis for the other fabrics that are added.



## Stitch Sampler Page

8. Choose more fabric off-cuts and threads in the shades and colours of your original choice.

9. The 'binca' has been chosen because it will help when using square-shaped stitches. Checked fabric would work just as well.

10. Cut an initial letter out of felt. We will be starting with 'A' and working through the alphabet.

11. Tack all these together: the backing, the fabric pieces and the felt letter.



12. Choose some threads that will bring out the colours of the original fabric piece.

13. Find beads, sequins, ribbons and other embellishments that you could use.

14. The work should fit in an 8 inch (20 cm) hoop - if this is how you like working. However, it is not essential to work with a hoop.